

# FUEL SYSTEM

## SERVICE INSTRUCTION WORKSHEET

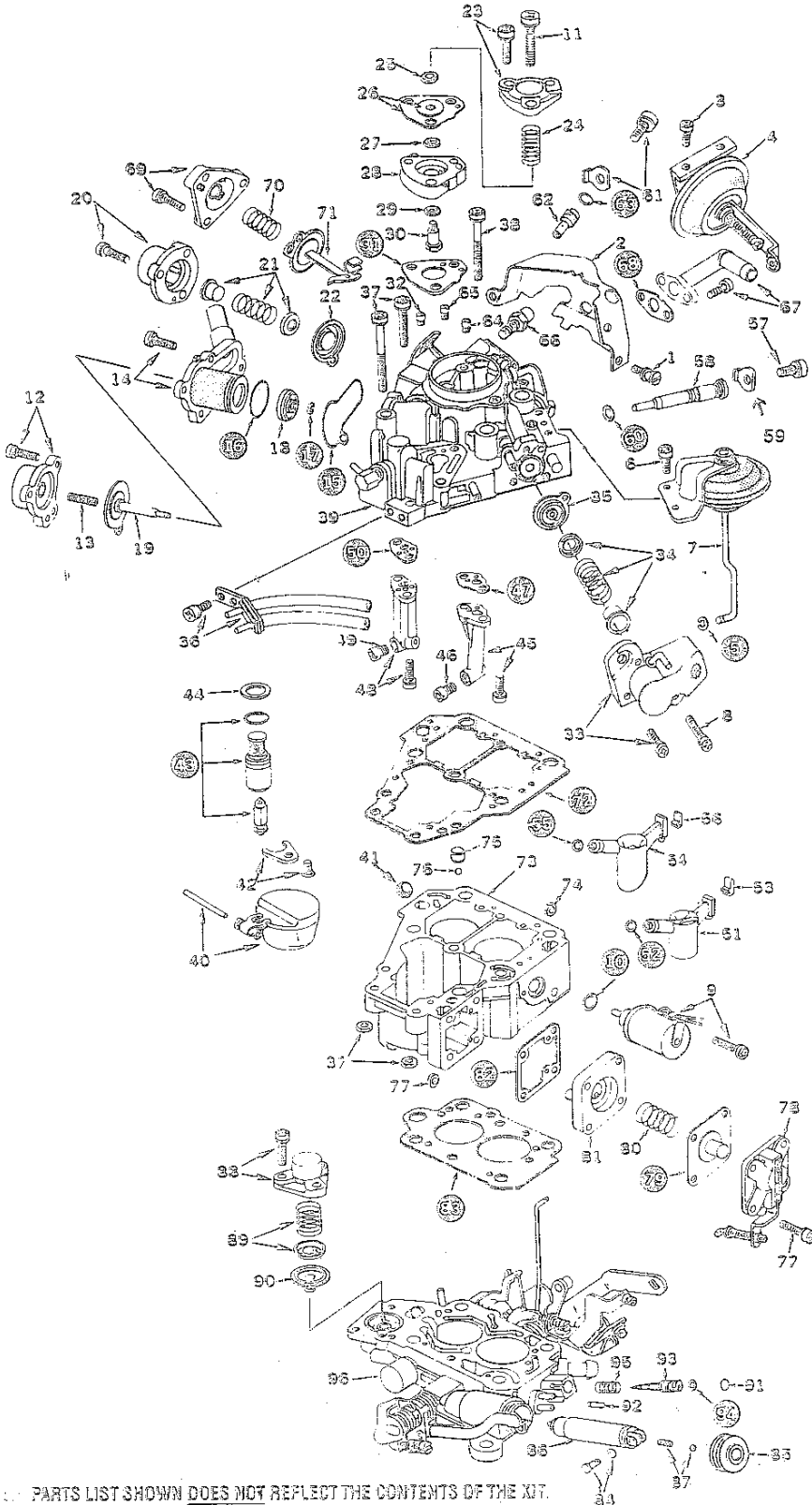
TO REPAIR

GF4558-6

(MIKUNI) SOLEX CARBURETOR

2 Barrel

### TYPICAL ILLUSTRATION



- Carefully read the text in the following pages to become familiar with the contents of this worksheet before performing carburetor overhaul.
- The exploded view is typical of the model carburetor this kit will service. The view may differ slightly from the actual carburetor being overhauled.
- Use the exploded view as a guide. The numerical sequence of the parts list may generally be followed to disassemble the carburetor far enough to permit cleaning and inspection.
- Parts list shown DOES NOT reflect the contents of the kit.
- Kit may contain extra parts intended for other carburetors within this group. Substitute identical replacement parts for original worn parts found in carburetor.

### PARTS LIST

- |                                      |                                      |
|--------------------------------------|--------------------------------------|
| 1 Screw break-away shield (3)        | 46 Jet, main, primary                |
| 2 Shield tamper-proof                | 47 Gasket, primary pedestal          |
| 3 Screw, sec diaphragm assembly (2)  | 48 Screw (2) & sec pedestal          |
| 4 Diaphragm assy secondary           | 49 Jet, main, secondary              |
| 5 Clip, throttle positioner link     | 50 Gasket secondary pedestal         |
| 6 Screw throttle positioner (2)      | 51 Venturi, primary                  |
| 7 Throttle positioner                | 52 O ring primary venturi            |
| 8 Screw ground lead                  | 53 Retainer, primary venturi         |
| 9 Screw & solenoid anti-dieseling    | 54 Venturi secondary                 |
| 10 O ring solenoid                   | 55 O ring primary venturi            |
| 11 Screw ground lead                 | 56 Retainer, secondary venturi       |
| 12 Screw & solenoid bowl vent        | 57 Jet, screw                        |
| 13 Spring solenoid                   | 58 Jet, pilot primary                |
| 14 Screw & bowl vent housing         | 59 Jet, screw retainer               |
| 15 Seal vent valve mounting          | 60 Jet, "O" Ring                     |
| 16 "O" ring, vent valve              | 61 Screw & retainer, lock            |
| 17 Clip, vent valve                  | 62 Jet pilot secondary               |
| 18 Vent valve                        | 63 "O" ring, jet, pilot              |
| 19 Diaphragm assy, vent valve        | 64 Jet air bleed primary             |
| 20 Screw (3) & Cover, C A V *        | 65 Jet air bleed secondary           |
| 21 Sleeve, spring & retainer C A V * | 66 Screw upper bracket               |
| 22 Diaphragm, C A V *                | 67 Screw (2) & water pipe            |
| 23 Screw & cover, power valve        | 68 Gasket, water pipe                |
| 24 Spring, diaphragm                 | 69 Screw (3) & cover vac. break      |
| 25 Nut, valve rod                    | 70 Spring, choke vacuum break        |
| 26 Washer (2) & diaphragm            | 71 Diaphragm assy vac break          |
| 27 Washer, rod (fibre)               | 72 Gasket, air horn                  |
| 28 Housing power valve               | 73 Main body                         |
| 29 Valve (rubber), power valve       | 74 Nut main body                     |
| 30 Rod power valve                   | 75 Weight pump ball check            |
| 31 Gasket, power valve               | 76 Ball, check pump                  |
| 32 Jet power valve                   | 77 Screw & nut (4) pump cover        |
| 33 Screw (2) & cover A S V *         | 78 Cover assembly, pump              |
| 34 Sleeve, spring retainer A S V *   | 79 Diaphragm, pump                   |
| 35 Diaphragm, A S V *                | 80 Spring, pump diaphragm            |
| 36 Screw (2) & vac hose connector    | 81 Pump body w/inlet ball            |
| 37 Screw (3) & nut, air horn         | 82 Gasket pump body                  |
| 38 Screw (2), center air horn        | 83 Gasket main body to throttle body |
| 39 Air horn assembly                 | 84 Clip & pin, E.G.R. * valve        |
| 40 Pin & float assembly              | 85 Dust cover E.G.R. * valve         |
| 41 Ball, anti-slosh, fuel            | 86 Valve E.G.R. *                    |
| 42 Screw & retainer needle seat      | 87 Ball & spring, E.G.R. valve       |
| 43 Needle, seat w/filter assy        | 88 Screw (3) & cover J A C V         |
| 44 Shim needle & seat (save);        | 89 Spring & retainer, J A C V        |
| 45 Screw (2) & pri pedestal          | 90 Diaphragm, J A C V                |
|                                      | 91 Plug, mixture screw               |
|                                      | 92 Roll pin mixture screw            |
|                                      | 93 Screw, idle mixture adjusting     |
|                                      | 94 "O" ring, mixture screw           |
|                                      | 95 Spring, mixture screw             |
|                                      | 96 Throttle body assembly            |

\* Some Models

### ABBREVIATIONS:

- |       |                                   |
|-------|-----------------------------------|
| A S V | Air Switching Valve               |
| C A V | Coasting Air Valve                |
| E G R | Exhaust Gas Recirculation         |
| H A C | High Altitude Compensation Switch |

PARTS LIST SHOWN DOES NOT REFLECT THE CONTENTS OF THE KIT.

## REMOVAL & INSTALLATION NOTES

- 1 Cover opening on intake manifold after carburetor is removed
- 2 Mark and index parts especially where similarities exist. Also note spring location points to ensure correct installation
- 3 To remove tamper resistant choke cover (only if necessary), grind or file off the two rolled over screw heads. Then saw a slot in the three breakaway screw heads and remove with a screwdriver
- 4 To remove upper water pipe (67) and choke breaker diaphragm (69 thru 71) remove upper gear bracket screw (66). Do not remove lower screw. Then, raise bracket just far enough to access the water pipe screws. Do not disengage plastic gear
- 5 To remove idle mixture screw plug (91), refer to Fig. 1
- 6 Before removing idle mixture screw (93) turn in until lightly seated counting number of turns. Record for proper installation
- 7 To remove needle seat refer to Fig. 2
- 8 Install parts and components in reverse order of removal
- 9 When installing idle mixture screw (93) turn in until lightly seated then back out number of turns recorded earlier
- 10 Check throttle linkage for freedom of movement before and after installing carburetor on engine

## CLEANING

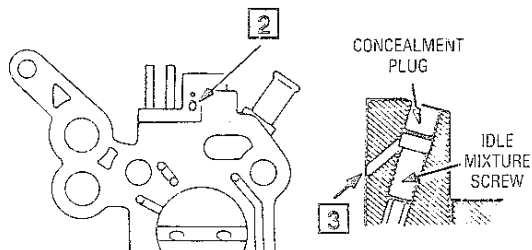
Cleaning must be done with carburetor disassembled. Use spray cleaner and a stiff bristle brush to remove dirt and carbon deposits. Do not use abrasives and wires to clean parts and passageways. Wash off in suitable solvent, and clear all passageways with compressed air.

**Caution:** When cleaning with solvent do not soak or spray parts containing rubber, leather, plastic and electrical components. Also, do not soak air horn assembly and main body assembly because internal seals may be damaged.

## ADJUSTMENT DATA

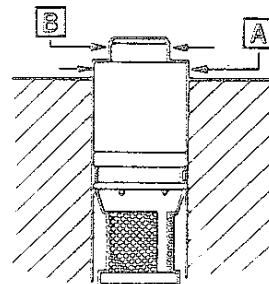
**FIG. 1  
CONCEALMENT PLUG  
REMOVAL**

- 1 Clamp throttle body in a vise with idle mixture screw facing up.  
**Warning:** Do not damage gasket surface
- 2 Drill a 2mm (5/64") pilot hole in the casting at a 45° angle toward concealment plug
- 3 Re-drill hole to 3mm (1/8") then, insert a blunt punch into hole and drive plug out



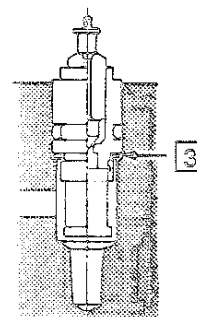
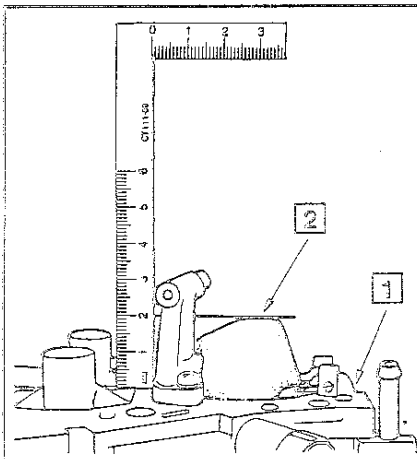
**FIG. 2  
NEEDLE SEAT  
REMOVAL**

- 1 When removing needle seat grip bottom portion 'A' with pliers. DO NOT clamp portion 'B' of seat



**FIG. 3  
FLOAT LEVEL  
ADJUSTMENT (DRY)**

- 1 Invert air horn assembly and remove gasket
- 2 Measure distance from air horn surface to bottom of float. It should be  $20 \pm 1$ mm (0.787 in)
- 3 If adjustment is required, change the shim thickness under the seat. Adding or removing a shim will change the float level by 3 times the thickness of the shim



## ENGINE IDLE SPEED

- 87-86 Check engine compartment decal emissions information
- 85-84 All<sup>1</sup> 850 to 900 RPM.
- 83 Exc. Canada 2.0L Eng. 700 to 850 RPM.  
2.6L Eng. 750 to 900 RPM.  
Canada—All 850 to 900 RPM.

<sup>1</sup> 1985 Precis - 850 RPM;  
1985, 1984 Hyundai - 850 RPM