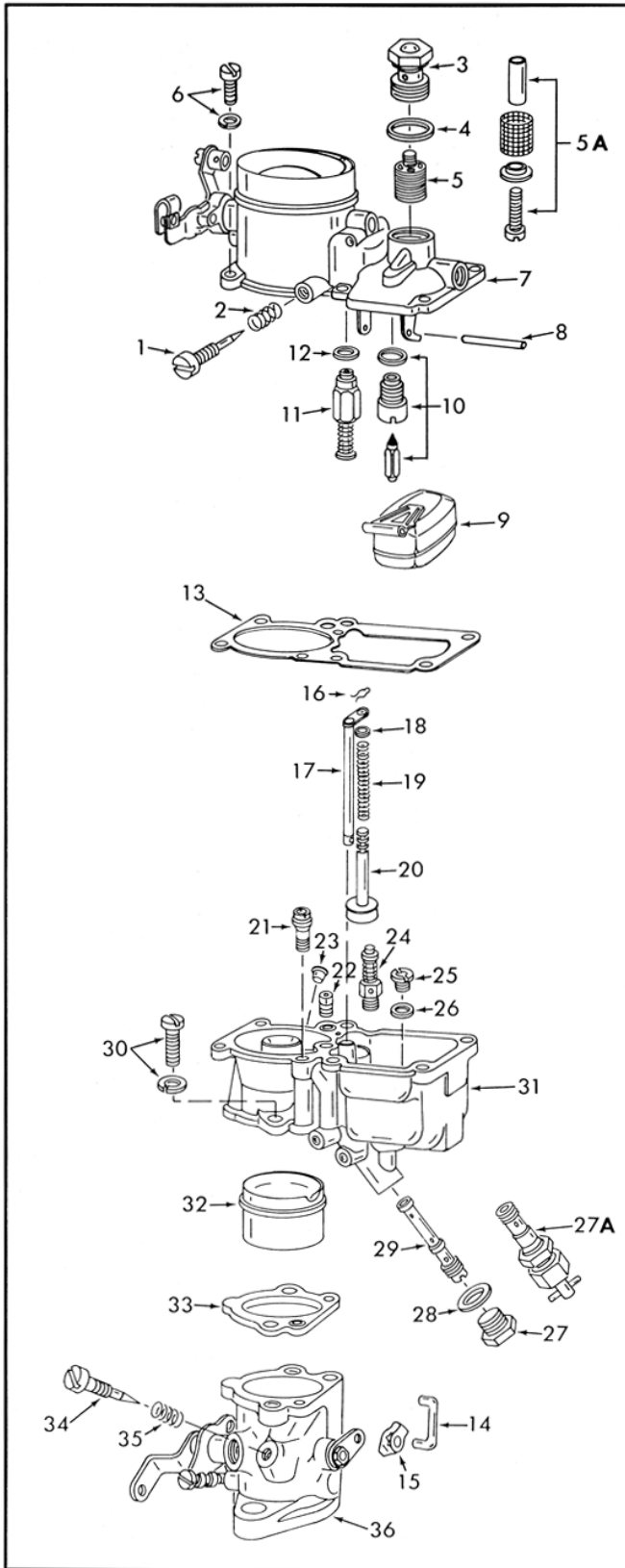


INSTRUCTION SHEET

ZENITH CARBURETOR SERIES - 28-228

GENERAL EXPLODED VIEW

THE GENERAL DESIGN AND PARTS SHOWN WILL VARY TO INDIVIDUAL UNITS COVERED ON THIS INSTRUCTION SHEET



DISASSEMBLY

USE EXPLODED VIEW AS A GUIDE. THE NUMERICAL SEQUENCE MAY GENERALLY BE FOLLOWED TO DISASSEMBLE UNIT FAR ENOUGH TO PERMIT CLEANING AND INSPECTION. NOTE: IF CARBURETOR HAS ADJUSTABLE MAIN JET (27A), IT WILL NOT HAVE A MAIN JET (25).

NOMENCLATURE

REF. NO.	REF. NO.
1. NEEDLE - IDLE ADJUSTING (28 SERIES)	18. WASHER - PUMP SPRING
2. SPRING - IDLE ADJUSTING NEEDLE (28 SERIES)	19. SPRING - PUMP
3. PLUG - FUEL FILTER	20. PUMP PLUNGER
4. GASKET - FILTER PLUG	21. JET - IDLE
5. FILTER - DISK TYPE	22. VENT - WELL
5A. FILTER - SCREEN TYPE	23. PLUG - PUMP PASSAGE
6. SCREW & LOCKWASHER (6) - BOWL COVER	24. VALVE - POWER JET
7. COVER - BOWL	25. JET - MAIN
8. PIN - FLOAT LEVER	26. GASKET - MAIN JET
9. FLOAT & LEVER ASSY.	27. PLUG - MAIN NOZZLE
10. NEEDLE, SEAT & GASKET ASSY.	27A. JET - ADJUSTABLE MAIN
11. VACUUM PISTON ASSY.	28. GASKET - PLUG OR ADJ. JET
12. GASKET - VACUUM PISTON ASSY.	29. NOZZLE - MAIN
13. GASKET - BOWL COVER	30. SCREW & LOCKWASHER - BOWL TO THROTTLE BODY
14. LINK - PUMP LEVER	31. BOWL ASSY. - FLOAT
15. RETAINER - PUMP LINK	32. VENTURI
16. RETAINER - PUMP	33. GASKET - THROTTLE BODY
17. ROD - PUMP	34. NEEDLE - IDLE ADJUSTING (28 SERIES)
	35. SPRING - IDLE ADJ. NEEDLE (28 SERIES)
	36. THROTTLE BODY ASSY.

CLEANING

CLEANING MUST BE DONE WITH CARBURETOR DISASSEMBLED. SOAK PARTS LONG ENOUGH TO SOFTEN AND REMOVE ALL FOREIGN MATERIAL. USE (1) A CARBURETOR CLEANING SOLVENT, (2) LACQUER THINNER, OR (3) DENATURED ALCOHOL. MAKE CERTAIN THE THROTTLE BORE IS FREE OF ALL CARBON AND VARNISH DEPOSITS. RINSE OFF IN SUITABLE SOLVENT, TAKING SPECIAL EFFORT TO FLUSH PUMP CIRCUIT THOROUGHLY. BLOW OUT ALL PASSAGES IN CASTING WITH COMPRESSED AIR AND CHECK CAREFULLY TO INSURE THOROUGH CLEANING OF OBSCURE AREAS. CAUTION: DO NOT SOAK ADJUSTABLE MAIN JET (27A), VACUUM PISTON ASSY. (11), OR RUBBER PARTS IN CLEANING SOLVENT.

REASSEMBLY

REASSEMBLE IN REVERSE ORDER OF DISASSEMBLY. NOTE SPECIAL INSTRUCTIONS.

SPECIAL INSTRUCTIONS

IDLE NEEDLE INSTALLATION - TURN IDLE NEEDLE IN LIGHTLY UNTIL SEATED, THEN BACK OUT 1 TURN.



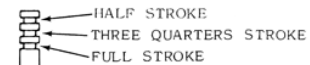
28 SERIES IDLE NEEDLE (BOWL COVER)



228 SERIES IDLE NEEDLE (THROTTLE BODY)

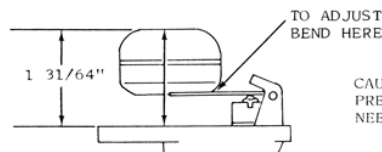
NOTE: CLOCKWISE ROTATION OF IDLE NEEDLE CAUSES A RICHER IDLE MIXTURE ON THE 28 SERIES AND A LEANER MIXTURE ON THE 228 SERIES.

PUMP PLUNGER INSTALLATION - INSTALL RETAINER IN SAME GROOVE IT WAS IN ORIGINALLY.



ADJUSTABLE VARIATIONS

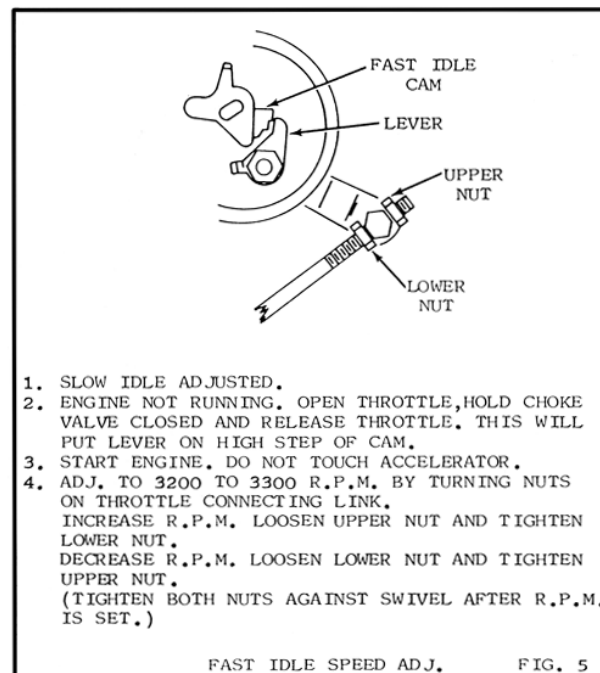
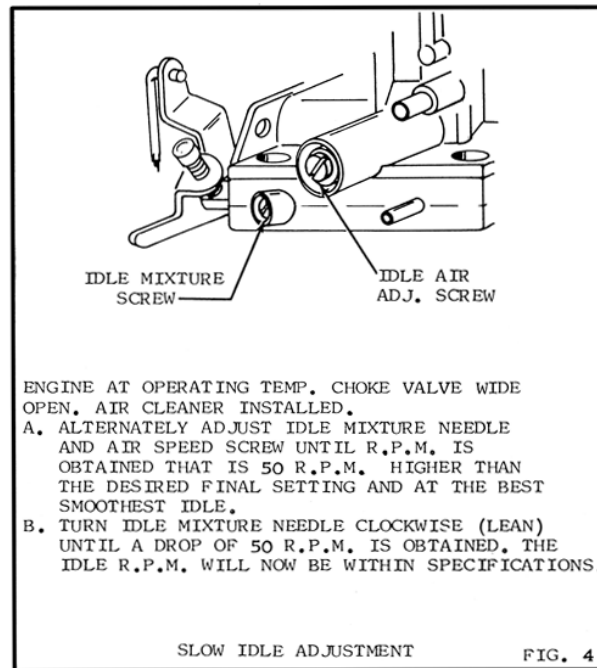
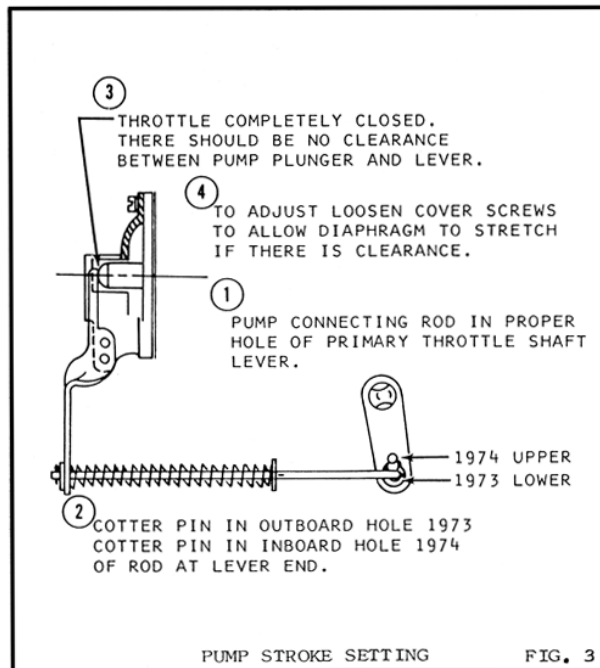
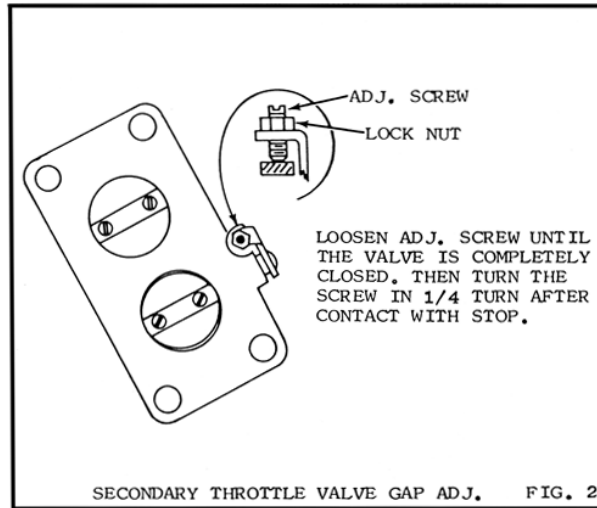
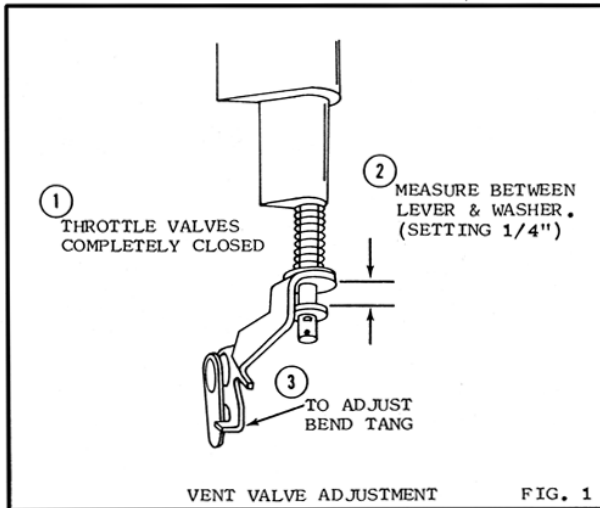
FLOAT LEVEL ADJUSTMENT



CAUTION: DO NOT EXERT PRESSURE ON RESILIENT NEEDLE VALVE.

WITH BOWL COVER INVERTED, MEASURE FROM MACHINE SURFACE OF BOWL COVER TO TOP CENTER OF FLOAT.

ADJUSTMENTS



JET INSTALLATION

	1973 OPEL 1900 & MANTA	1973 GT	1974 MANTA
MAIN JETS			
PRIMARY	X122.5	X120	X125
SECONDARY	X155	X137.5	X160
AIR CORRECTION JETS			
PRIMARY	120	110	130
SECONDARY	80	120	80