

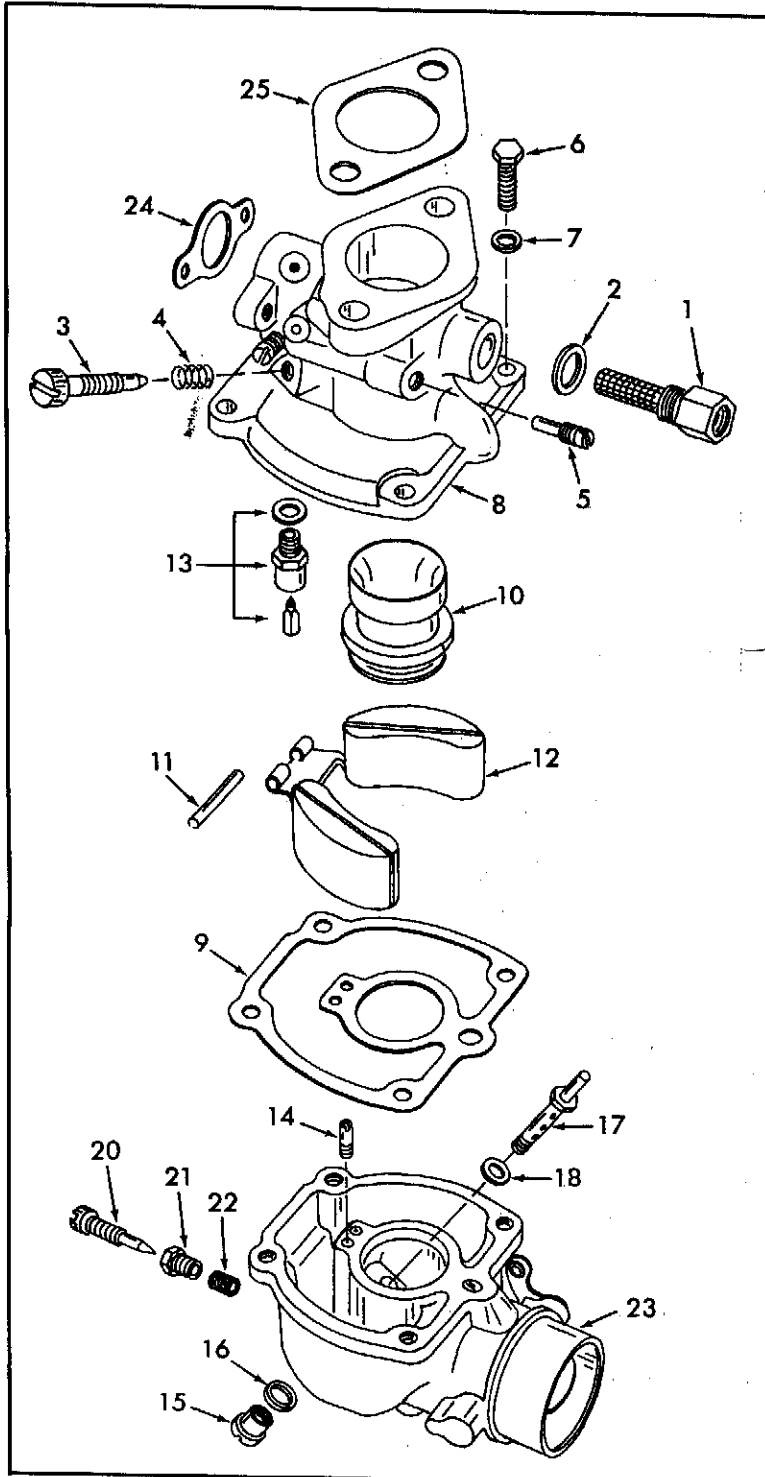
INSTRUCTION SHEET

08050-396

INTERNATIONAL HARVESTER CARBURETOR MODELS - 1" - 1 1/4" - 1 1/2"

GENERAL EXPLODED VIEW

THE GENERAL DESIGN AND PARTS SHOWN WILL VARY TO INDIVIDUAL UNITS COVERED ON THIS INSTRUCTION SHEET.



DISASSEMBLY

USE EXPLODED VIEW AS A GUIDE. THE NUMERICAL SEQUENCE MAY GENERALLY BE FOLLOWED TO DISASSEMBLE UNIT FAR ENOUGH TO PERMIT CLEANING AND INSPECTION.

NOMENCLATURE

REF. NO.	REF. NO.
1. FITTING - FUEL INLET AND SCREEN	13. NEEDLE SEAT & GASKET ASSEMBLY
2. GASKET - FUEL INLET FITTING	14. JET - IDLE
3. NEEDLE - IDLE AIR OR MIXTURE ADJUSTING	15. NUT - DISCHARGE NOZZLE
4. SPRING - IDLE ADJUSTING NEEDLE	16. GASKET - DISC NOZZLE NUT
5. PLUG - IDLE PASSAGE	17. NOZZLE - DISCHARGE
6. SCREW - BOWL COVER	18. GASKET - DISCHARGE NOZZLE
7. LOCKWASHER - BOWL COVER SCREW	19. PLUG - DRAIN (NOT SHOWN)
8. COVER - BOWL	20. NEEDLE - MAIN ADJUSTING
9. GASKET - BOWL COVER	21. NUT - MAIN ADJUSTING NEEDLE PACKING
10. VENTURI	22. PACKING - MAIN ADJUSTING NEEDLE
11. PIN - FLOAT LEVER	23. FLOAT BOWL ASSEMBLY
12. FLOAT	24. GASKET - CARBURETOR TO GOVERNOR HOUSING
	25. GASKET - FLANGE

CLEANING

CLEANING MUST BE DONE WITH CARBURETOR DISASSEMBLED. SOAK PARTS LONG ENOUGH TO SOFTEN AND REMOVE ALL FOREIGN MATERIAL. USE (1) A CARBURETOR CLEANING SOLVENT, (2) LACQUER THINNER, OR (3) DENATURED ALCOHOL. MAKE CERTAIN THE THROTTLE BORES ARE FREE OF ALL CARBON AND VARNISH DEPOSITS. RINSE OFF IN SUITABLE SOLVENT. BLOW OUT ALL PASSAGES IN CASTINGS WITH COMPRESSED AIR AND CHECK CAREFULLY TO INSURE THOROUGH CLEANING OF OBSCURE AREAS.

REASSEMBLY

REASSEMBLE IN REVERSE ORDER OF DISASSEMBLY. NOTE SPECIAL INSTRUCTIONS.

SPECIAL INSTRUCTIONS

PACKING INSTALLATION (22) - AFTER PACKING HAS BEEN INSTALLED AND INITIAL ADJUSTMENT MADE ON ADJUSTING NEEDLE, BLOW OUT ANY PARTICLES OF PACKING THAT MAY HAVE GOTTEN IN CARBURETOR WHEN NEEDLE WAS INSTALLED.

MAIN JET ADJUSTING NEEDLE (20) - TURN NEEDLE IN LIGHTLY UNTIL SEATED, THEN BACK OUT 3 TURNS.

CAUTION: DO NOT OVERTIGHTEN MAIN ADJUSTING SCREW PACKING NUT. CASTING MAY BE BROKEN BY EXCESSIVE PRESSURE OF THE EXPANDING PACKING.

IDLE ADJUSTING NEEDLE (3) - TURN NEEDLE IN LIGHTLY UNTIL SEATED, THEN BACK OUT 1 TURN.

IDLE ADJUSTMENT

ENGINE AT OPERATING TEMPERATURE, CHOKE VALVE COMPLETELY OPEN. SET THROTTLE STOP SCREW TO 425 - 450 R.P.M., THEN ADJUST IDLE MIXTURE OR AIR SCREW TO A SMOOTH IDLE AND RECHECK R.P.M.

NOTE: CLOCKWISE ROTATION OF IDLE MIXTURE SCREW LOCATED IN BOWL COVER LEANS MIXTURE. IDLE AIR SCREW LOCATED IN FUEL BOWL ENRICHES MIXTURE.

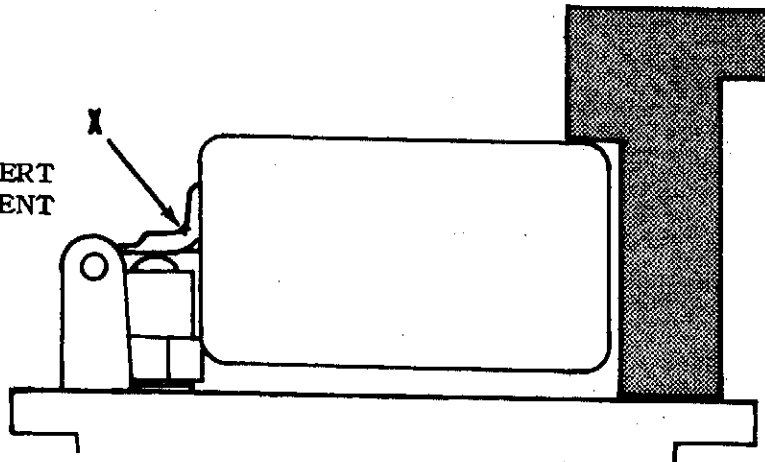
POWER ADJUSTMENT

GASOLINE MODELS: POWER ADJUSTING SCREW CAN BE ADJUSTED FOR A LEANER MIXTURE ON LIGHT LOAD CONDITIONS; BUT WHEN THE ENGINE IS REQUIRED TO PRODUCE MAXIMUM POWER, ADJUSTING SCREW SHOULD BE 5 TURNS OPEN. (FULL FLOW OF MAIN JET)

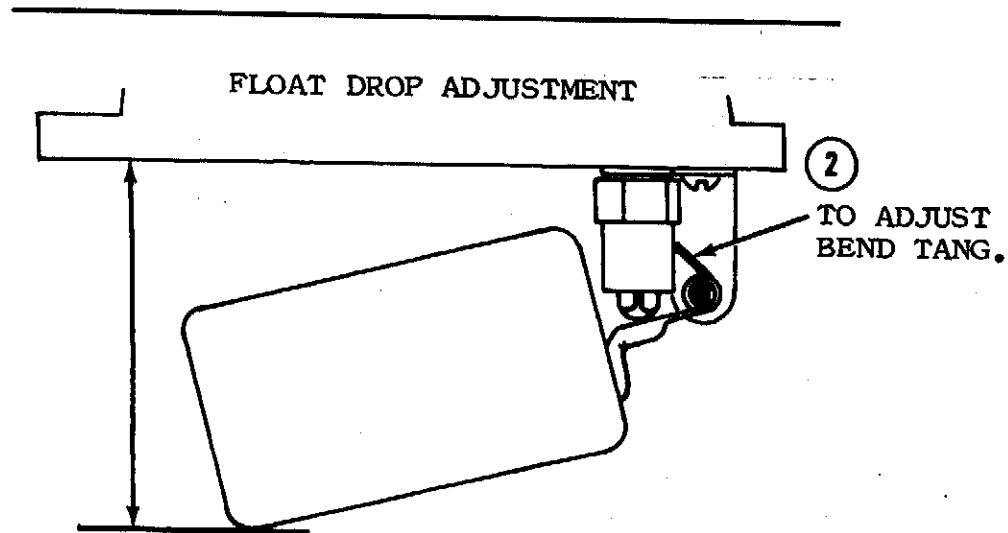
DISTILLATE MODELS: POWER ADJUSTING SCREW MUST BE ADJUSTED TO CONTROL THE MIXTURE FOR ALL LOAD CONDITIONS. AFTER POWER ADJUSTMENT IS MADE, RECHECK IDLE MIXTURE ADJUSTMENT.

FLOAT LEVEL ADJUSTMENT

CAUTION: DO NOT EXERT PRESSURE ON RESILIENT NEEDLE VALVE.



- ① BOWL COVER INVERTED, MEASURE DISTANCE FROM THE MACHINED SURFACE OF THE BOWL COVER TO THE BOTTOM OF THE FLOAT (OR FLOATS).
- ② TO ADJUST FLOAT CAN BE CHANGED SLIGHTLY BY REMOVING FLOAT AND CAREFULLY HOLDING FLOAT LEVER WITH PLIERS AND BENDING THE FLOAT LEVER AT POINT X, BEING SURE TO APPLY THE PRESSURE TO THE LEVER ITSELF AND NOT ON THE THIN WALL OF THE FLOAT.



- ① BOWL COVER HELD UPRIGHT, FLOAT HANGING FREELY, MEASURE DISTANCE FROM THE MACHINED SURFACE OF THE BOWL COVER TO THE BOTTOM OF THE FLOAT.

FLOAT SETTINGS

CARB. MODEL	FLOAT LEVEL	FLOAT DROP
1" (ROUND FLOAT)	1 27/32"	2 1/8"
1 1/4" - 1 3/8" (DOUBLE FLOAT)	1 5/16"	1 15/16"