

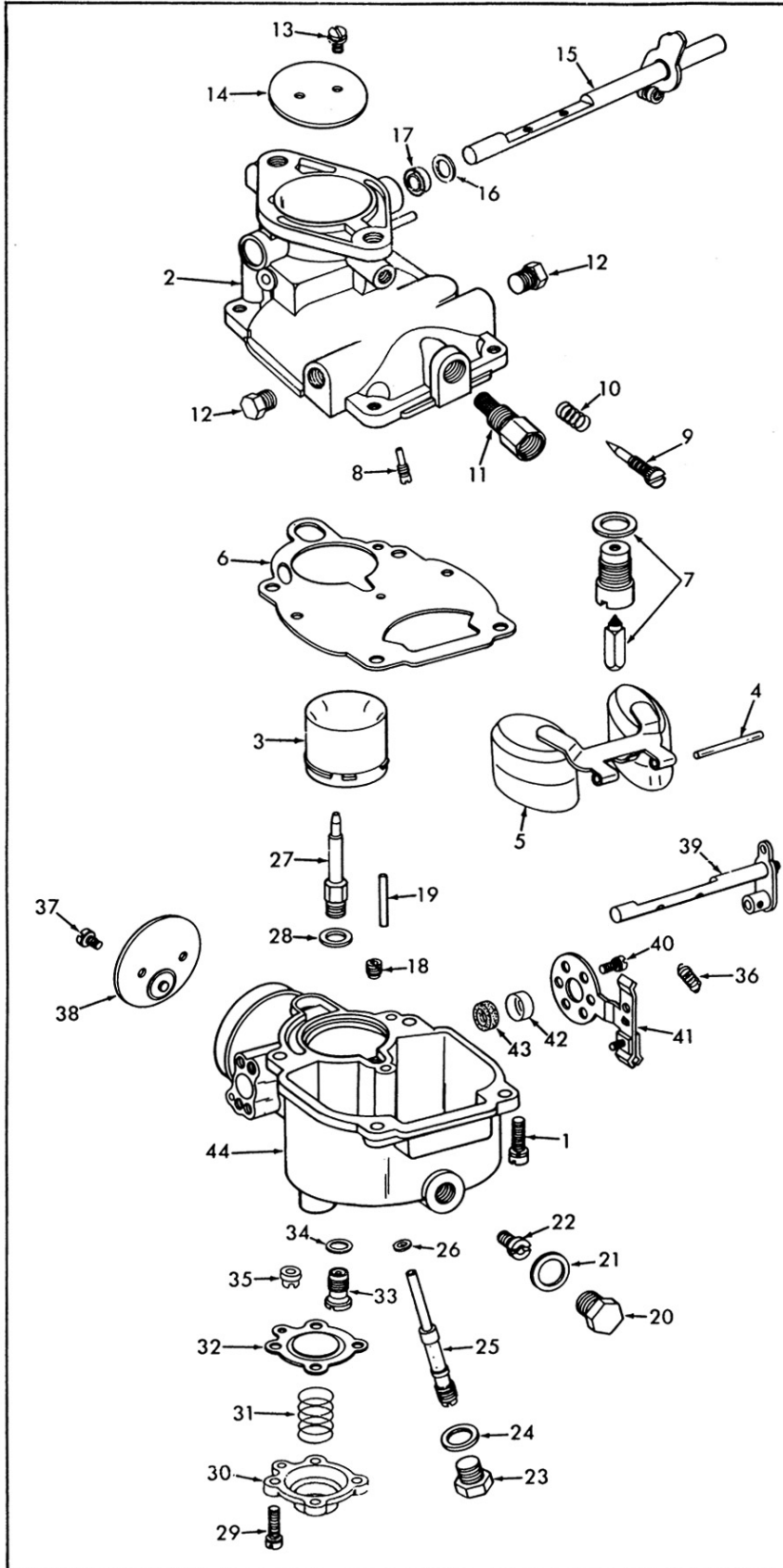
INSTRUCTION SHEET

OFF VEHICLE CARBURETOR SERVICE

ZENITH MODEL-Z267L

GENERAL EXPLODED VIEW

THE GENERAL DESIGN AND PARTS SHOWN WILL VARY
TO INDIVIDUAL UNITS COVERED ON THIS INSTRUCTION SHEET.



DISASSEMBLY

USE EXPLODED VIEW AS A GUIDE. THE NUMERICAL SEQUENCE MAY GENERALLY BE FOLLOWED TO DISASSEMBLE UNIT FAR ENOUGH TO PERMIT CLEANING AND INSPECTION. NOTE: BEFORE REMOVING THROTTLE VALVE (14) MAKE A SCRIBE MARK ON VALVE AND SURFACE OF FLANGE FOR PROPER REASSEMBLY. SPECIAL TOOL IS USED TO REMOVE AND INSTALL PUMP CHECK VALVE (35).

NOMENCLATURE

| REF. NO. | REF. NO. |
|---|--|
| 1. SCREW & LOCKWASHER (4)-BOWL COVER | 24. GASKET-PLUG |
| 2. BOWL COVER ASSEMBLY | 25. NOZZLE-MAIN |
| 3. VENTURI | 26. GASKET-MAIN NOZZLE |
| 4. PIN-FLOAT LEVER | 27. NOZZLE-PUMP |
| 5. FLOAT & LEVER ASSEMBLY | 28. GASKET-PUMP NOZZLE |
| 6. GASKET-BOWL COVER | 29. SCREW & LOCKWASHER (4)-PUMP COVER |
| 7. NEEDLE & SEAT ASSEMBLY | 30. COVER-PUMP DIAPHRAGM |
| 8. JET-IDLE | 31. SPRING-PUMP DIAPHRAGM |
| 9. NEEDLE-IDLE ADJUSTING | 32. DIAPHRAGM-PUMP |
| 10. SPRING-IDLE ADJUSTING NEEDLE | 33. VALVE ASSY.-POWER |
| 11. FITTING & SCREEN-INLET | 34. GASKET-POWER VALVE |
| 12. PLUG (2)-FUEL PASSAGE | 35. CHECK VALVE-PUMP INLET |
| 13. SCREW & LOCKWASHER (2)-THROTTLE VALVE | 36. SPRING-CHOKE RETURN VALVE |
| 14. VALVE-THROTTLE | 37. SCREW & LOCKWASHER (2)-CHOKE VALVE |
| 15. THROTTLE SHAFT & LEVER ASSY. | 38. VALVE-CHOKE |
| 16. RETAINER-THROTTLE SHAFT SEAL | 39. SHAFT & LEVER-CHOKE |
| 17. SEAL-THROTTLE SHAFT | 40. SCREW & LOCKWASHER (2)-CHOKE BRACKET |
| 18. JET-WELL VENT | 41. BRACKET ASSY.-CHOKE |
| 19. TUBE-IDLE PASSAGE | 42. RETAINER-FELT SEAL |
| 20. PLUG-MAIN JET | 43. SEAL (FELT)-CHOKE SHAFT |
| 21. GASKET-MAIN JET PLUG | 44. FLOAT BOWL ASSEMBLY |
| 22. JET-MAIN | |
| 23. PLUG-MAIN NOZZLE | |

CLEANING

CLEANING MUST BE DONE WITH CARBURETOR DISASSEMBLED. SOAK PARTS LONG ENOUGH TO SOFTEN AND REMOVE ALL FOREIGN MATERIAL. USE A CARBURETOR CLEANING SOLVENT. MAKE CERTAIN THE THROTTLE BORES ARE FREE OF ALL CARBON AND VARNISH DEPOSITS. RINSE OFF IN SUITABLE SOLVENT. BLOW OUT ALL PASSAGES IN CASTINGS WITH COMPRESSED AIR AND CHECK CAREFULLY TO INSURE THOROUGH CLEANING OF OBSCURE AREAS. CAUTION: DO NOT SOAK NON METAL PARTS IN CLEANING SOLVENTS.

REASSEMBLY

REASSEMBLE IN REVERSE ORDER OF DISASSEMBLY. NOTE SPECIAL INSTRUCTIONS.

SPECIAL INSTRUCTIONS

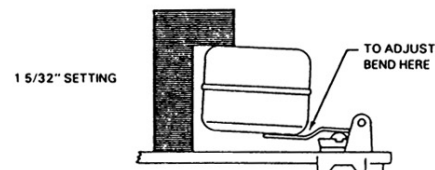
THROTTLE SHAFT SEAL INSTALLATION-INSTALL NEOPRENE SEAL (17) WITH SEALING EDGES TO THE OUTSIDE. COVER WITH FLAT WASHER (16) AND STAKE IN PLACE.

THROTTLE VALVE INSTALLATION-IDLE STOP SCREW BACKED OUT. INSTALL VALVE (14) WITH SCRIBE MARKS ALIGNED. TAP LIGHTLY TO CENTER IN THROTTLE BORE. TIGHTEN SCREWS SECURELY. THROTTLE HELD CLOSED. TURN THROTTLE STOP SCREW IN UNTIL IT JUST CONTACTS STOP PIN, THEN TURN SCREW IN 1 1/2 ADDITIONAL TURNS.

IDLE NEEDLE INSTALLATION-TURN NEEDLE IN LIGHTLY UNTIL SEATED. THEN BACK OUT 1 1/4 TURNS.

FLOAT LEVEL ADJUSTMENT

WITH BOWL COVER INVERTED, MEASURE FROM THE MACHINE SURFACE OF BOWL COVER (NO BASKET) TO TOP OF EACH FLOAT PONTOON. TO ADJUST BEND FLOAT LEVER CLOSE TO FLOAT BODY. NOTE: WHEN VIEWED FROM FREE END, THE FLOAT PONTOONS MUST BE CENTERED AND AT RIGHT ANGLES TO THE MACHINED SURFACE OF BOWL COVER AND MOVE FREELY ON THE FLOAT PIN.



CAUTION: DO NOT EXERT
PRESSURE ON RESILIENT
NEEDLE VALVE