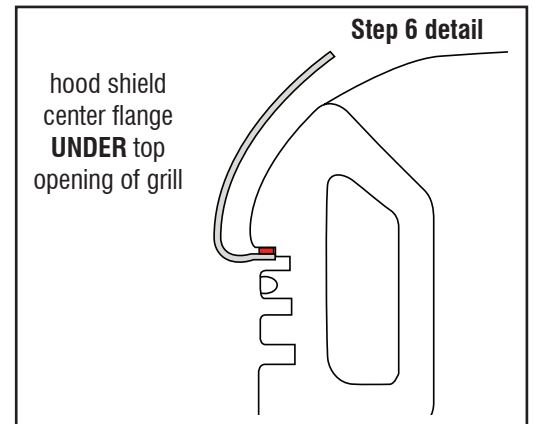
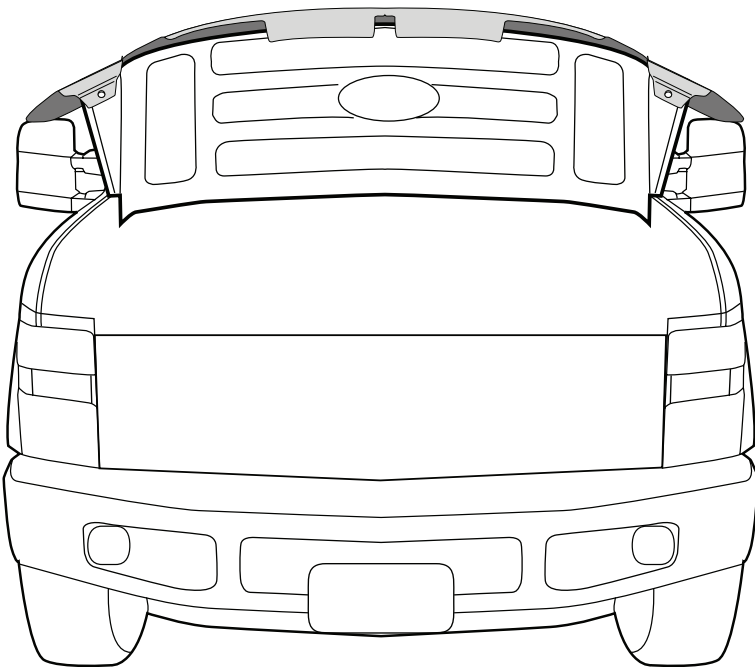


1. Clean the top grill area and leading edge of hood with a soft cloth.
2. Apply a light coating of Surface prep to the underside of the top opening in the vehicle grill.
3. Raise hood.
4. Peel back 2" (5 cm) of tape liner from each flange.
5. Align hood shield with hood edge.
6. Ensure that center flanges wrap **UNDER** the top opening in the grill, and that tape tabs are accessible. (See detail below.)
7. Remove remaining tape liner by pulling on tape tabs.
8. Install (1) screw in each side flange. Do not overtighten.
9. Remove remaining tape liner by pulling on tape tabs.
10. Apply pressure to tape flanges to ensure adhesion.
11. Close hood.
12. Apply (4) Bump ons to hood surface.



**IMPORTANT:** Before driving, ensure the hood shield is properly secured to vehicle. Clean with a **SOFT** cloth and soap and water **ONLY!** Using abrasive cleaners, chemicals, or solvents will **VOID** the warranty on this product.