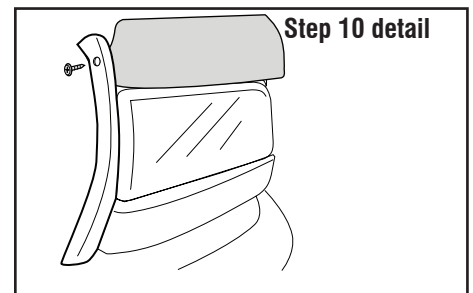
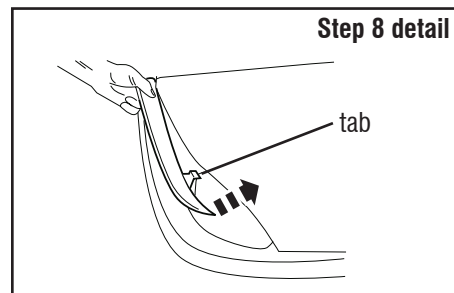
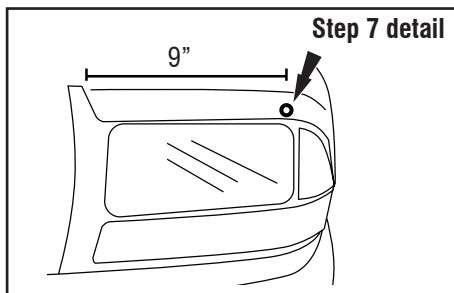
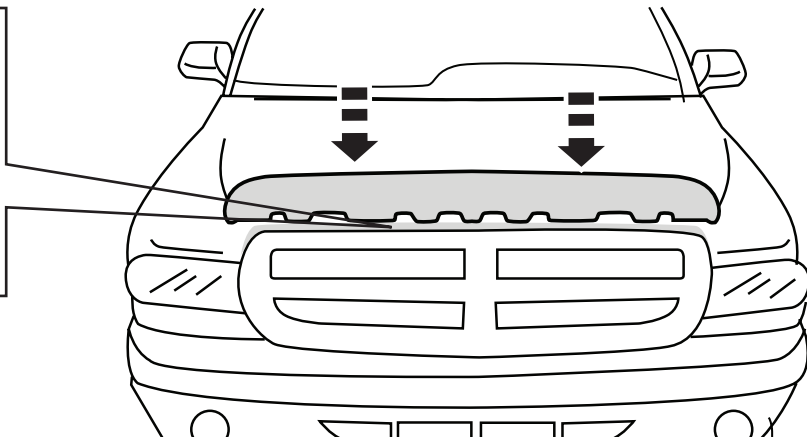
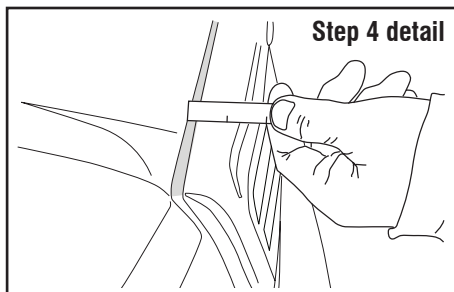


1. Open hood.
2. Locate frame that attaches to hood. Loosen, but do not remove (4) hex screws that attach to the underside of hood.
3. Locate hex screws that the top of grill to hood. Loosen, but do not remove screws.
4. Lower hood and pivot grill forward to create a 1/8" gap between hood and grill. (See detail below.)
5. Slide hood shield between hood and grill until properly positioned. Retighten previously loosened hex screws.
6. **Fender Protector Installation:** Place (1) bump on on the leading edge of fender above headlight 9" from edge of grill.
7. Expose sheet metal of hood by releasing the rubber seal near grill area. Discard plastic fastener.
8. Slide protector tab behind main headlight assembly by tilting while aligned with the space between the side marker and main headlight assembly. (See detail below.)
9. Align the predrilled hole in the protector with the hole in the sheet metal by sliding flange between the rubber and metal flange.
10. The self tapping screw replaces the previously discarded fastener. Secure deflector and rubber seal to sheet metal flange using this screw. **DO NOT OVER TIGHTEN.** (See detail below.)
11. Repeat for opposite side fender protector.



**IMPORTANT:** Before driving, ensure the hood shield is properly secured to vehicle. Clean with a **SOFT** cloth and soap and water **ONLY!** Using abrasive cleaners, chemicals, or solvents will **VOID** the warranty on this product.