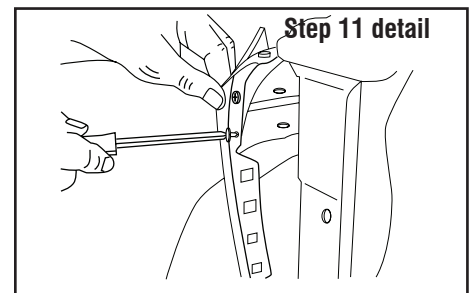
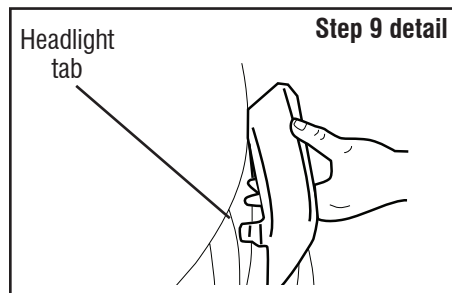
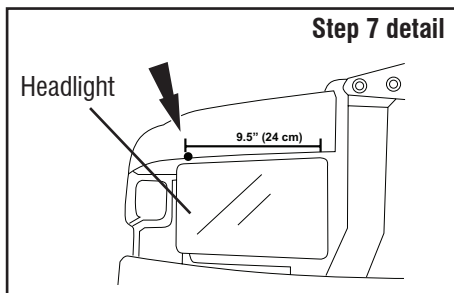
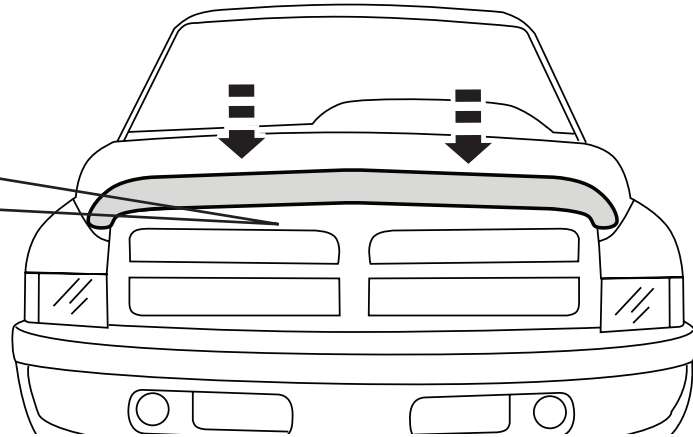
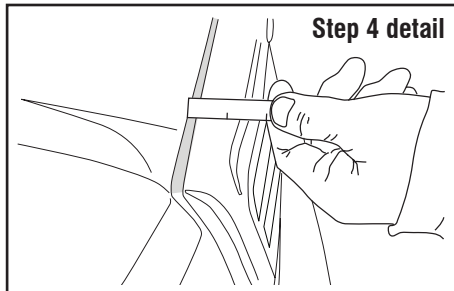


1. Open hood.
2. Locate the black frame that attaches to grill. Remove (4) hex screws that attaches the frame to the underside hood.
3. Locate the hex screw studs along the underside that attaches the top of the grill to the hood. Loosen, but do not totally remove the screws.
4. Lower the hood, and pivot the grill forward to create a 1/8" (.32 cm) gap between hood and grill. (See detail below)
5. Slide the hood shield between the hood and grill and center. Replace and retighten previously loosened hex screws.
6. **Fender Protector Intallation:** Remove side marker light by removing the (1) screw directly underneath the light and sliding light forward.
7. Place (1) bump-on on the leading edge of the fender above headlight 9.5" from edge of grill. (See detail below)
8. Slide the headlight tab behind the main headlight assembly.
9. Tab should be positioned snugly behind headlight assembly. (See detail below)
10. It is necessary to expose the sheet metal flange of the hood by releasing the rubber seal nearest the grill. Discard the (2) plastic fasteners.
11. Secure rubber seal and deflector to sheet metal flange using self tapping screws. **NOTE:** Do not overtighten. (See detail below)
12. Replace side marker light and secure with previously removed screw. Repeat procedure for opposite side.



**IMPORTANT:** Before driving, ensure the hood shield is properly secured to vehicle. Clean with a **SOFT** cloth and soap and water **ONLY!** Using abrasive cleaners, chemicals, or solvents will **VOID** the warranty on this product.