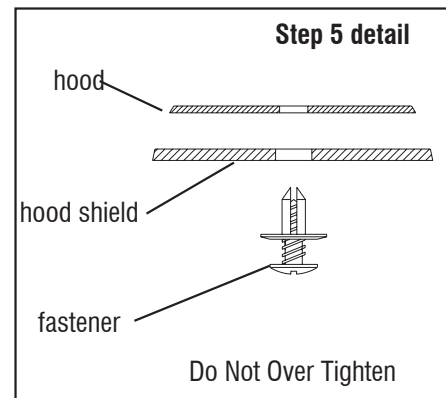
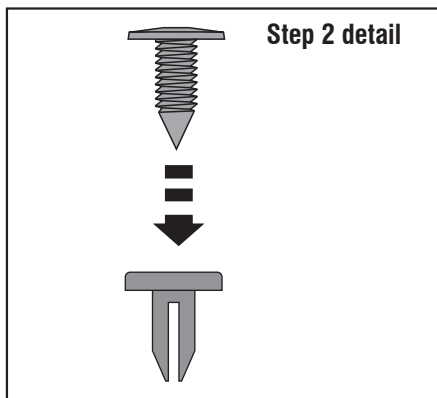
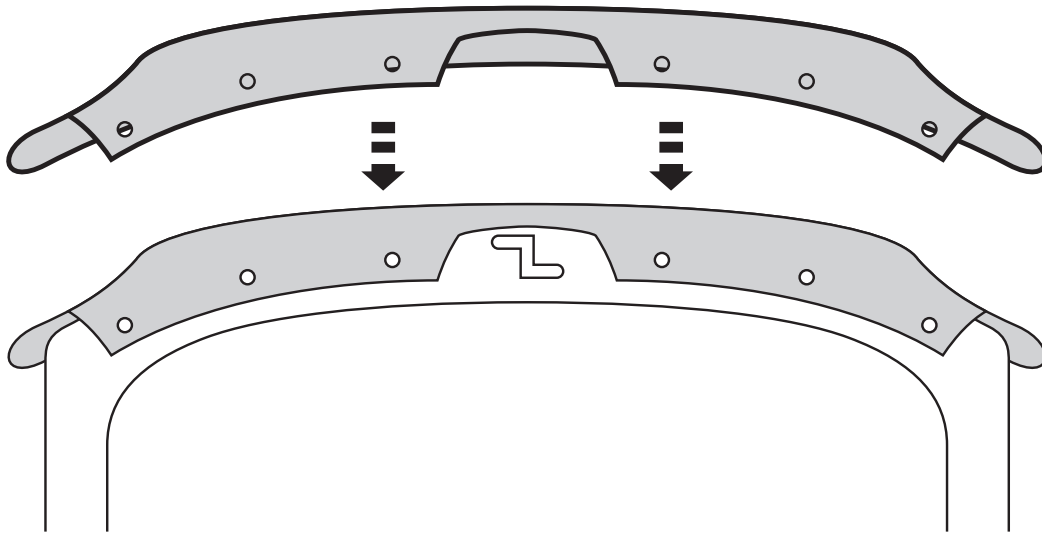


1. Clean hood shield mounting location.
2. Assemble Fasteners by inserting the screw portion into the lower receptacle. (See detail below.)
3. Test fit hood shield. Note location of (6) holes in hood that correspond to the (6) holes in the hood shield.
4. Center hood shield and attach using (6) previously assembled Fasteners. (See detail below.) **NOTE:** Do not over tighten!
5. Lower hood, adjust hood bumper stops if necessary. Apply bump-ons to hood surface.



**IMPORTANT:** Before driving, ensure the hood shield is properly secured to vehicle. Clean with a **SOFT** cloth and soap and water **ONLY!** Using abrasive cleaners, chemicals, or solvents will **VOID** the warranty on this product.