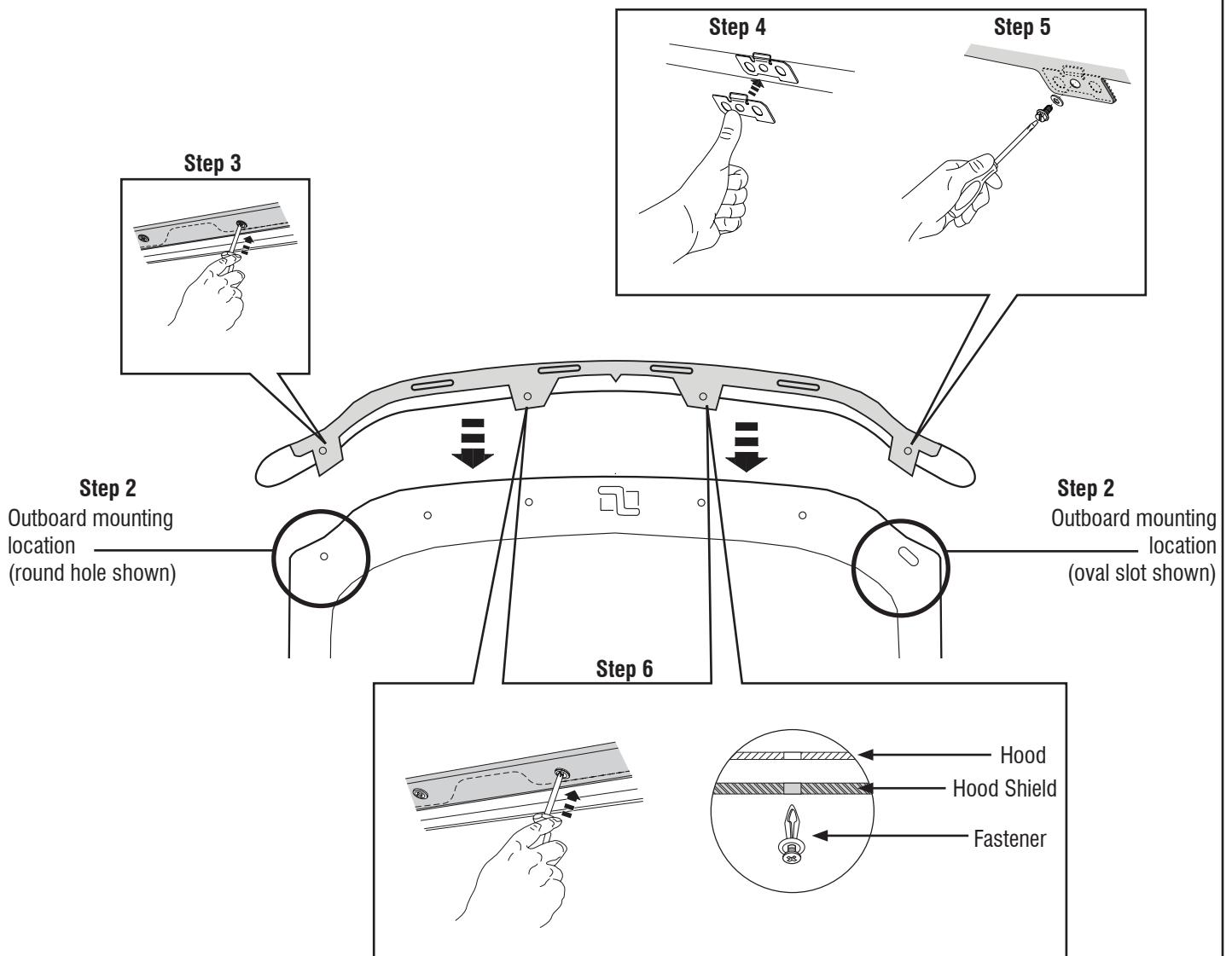


1. Clean hood shield mounting location and raise hood.
2. Center hood shield on hood and align with holes in hood. **If the two outboard mounting locations are round holes**, proceed to **Step 3**. **If the two outboard mounting locations are oval slots**, proceed to **Step 4**. (See detail below.)
3. Attach hood shield to hood using (4) fasteners. Proceed to **Step 7**. (See detail below.)
4. Press a bracket into each **oval slot** mounting location prior to installing hood shield. (See detail below.)
5. Attach hood shield to hood using (2) fasteners at center mounting locations, and (2) screws with washers at **outboard** mounting locations. (See detail below.)
6. Attach (2) center flanges using (2) fasteners. (See detail below.)
7. Lower hood. Clean hood surface with an alcohol pad, and apply (4) bump on's to hood surface.



**IMPORTANT:** Before driving, ensure the hood shield is properly secured to vehicle. Clean with a **SOFT** cloth and soap and water **ONLY!** Using abrasive cleaners, chemicals, or solvents will **VOID** the warranty on this product.