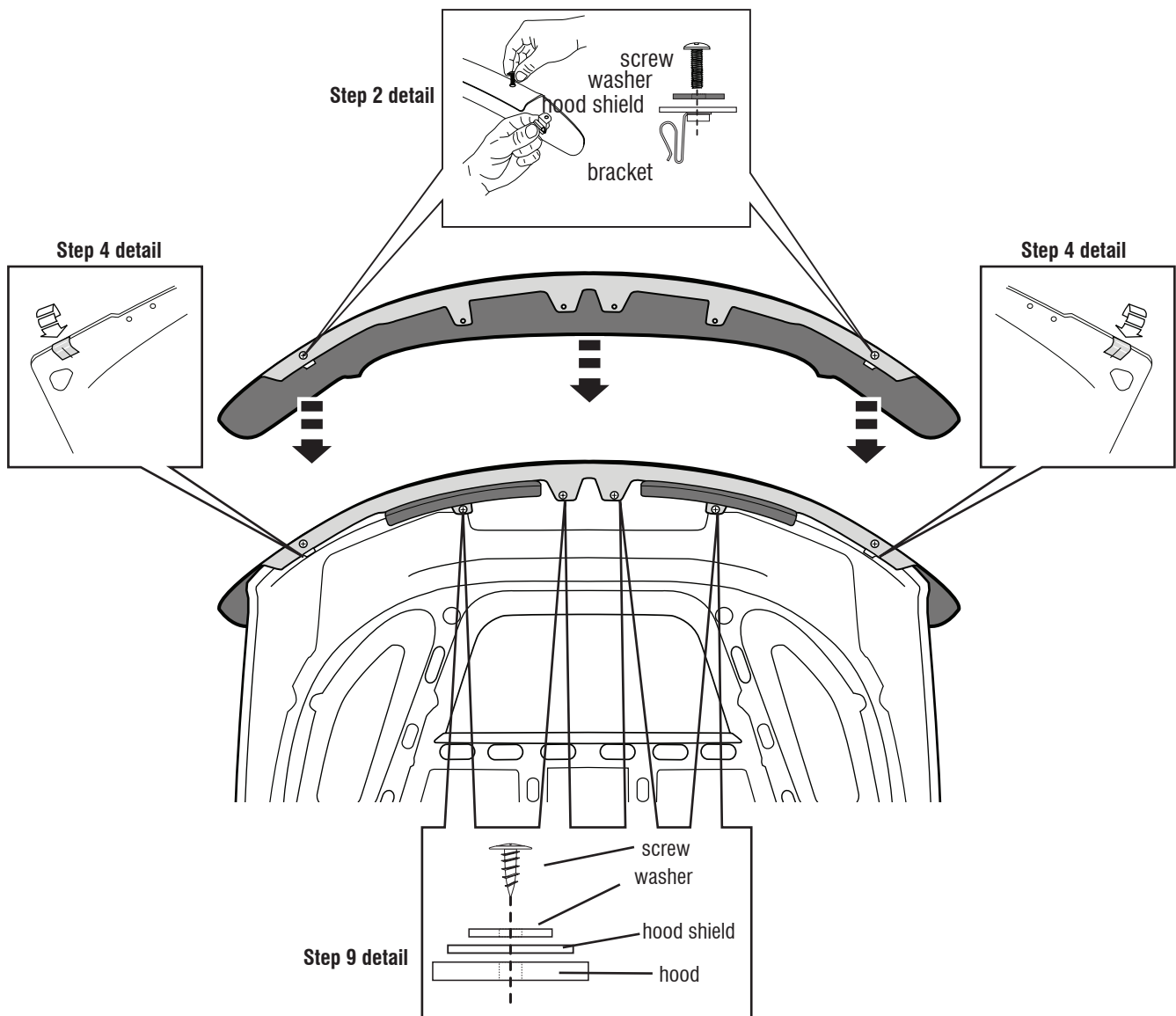


1. Open hood.
2. Install (2) brackets on hood shield flange using (2) machine screws and (2) black plastic washers. (See detail below)
3. Align holes in hood shield with center of hood in order to center part in place. Slide (2) center flanges underneath rubber seal on hood. Note the location where the brackets will align with hood edge and mark with a grease pencil. Remove hood shield.
4. Center a piece of protective film over each grease pencil mark, and wrap around the hood edge. (See detail below)
5. Clean remaining (4) mounting locations using alcohol pads and allow to dry.
6. Remove red tape liner from (4) flange locations to expose adhesive.
7. Position hood shield back in place on hood.
8. Apply pressure to (4) tape flanges to ensure adhesion of tape to underside of hood.
9. Insert (4) self tapping screws with (4) white plastic washers through the hood shield and into the hood. Securely tighten. (See detail below)
10. Slide each end bracket over hood edge, ensuring that each is centered on the protective film previously installed in **Step 4**.  
**NOTE:** It may be necessary to remove excess caulk with a razor blade.
11. Close hood and install (4) bump ons at pre-cleaned locations on the painted hood surface.



**IMPORTANT:** Before driving, ensure the hood shield is properly secured to vehicle. Clean with a **SOFT** cloth and soap and water **ONLY!** Using abrasive cleaners, chemicals, or solvents will **VOID** the warranty on this product.