

IMPORTANT: READ BEFORE INSTALLATION

Step 1: Prior to Installation

- A) Stampede Products only approves installing these Fender Flares according to these written instructions with the hardware provided. **WARNING:** Failure to install according to these instructions will invalidate the warranty. This includes, but not limited to using alternative installation methods, hardware, or materials. **DO NOT USE:** Loctite, SuperGlue, or similar products on the hardware or the flares.
- B) Inspect the Fender Flares thoroughly for defects or damage and verify the contents of package.
- C) Verify the fit of the flares to the vehicle. (Some filing, sanding, or cutting may be necessary to ensure proper fit).
- D) **Painting (Optional): PAINTED FLARES CANNOT BE RETURNED, TEST FIT BEFORE PAINTING.** If painting is desired it must be done prior to installing flares on vehicle. Clean outer surface with a good grade degreaser. **DO NOT USE LACQUER THINNER OR ENAMEL REDUCER AS A DEGREASER.** Wipe outer surface thoroughly with a tack rag prior to paint. Application of plastic adhesion promoter for ABS plastic as per your paint system manufacturer's recommendations is required. Paint flares using a high quality enamel, or polyurethane automotive paint. If painting edge trim (not recommended) use a flex additive.

KIT CONTAINS:

(4) FENDER FLARES
(28) FEET OF EDGE TRIM
(32) DECORATIVE BOLTS NUTS AND WASHERS*
(10) SCREWS
(6) CL1-0018
(6) CL1-0019
(4) U-CLIPS
(10) BLACK TABS

TOOLS NEEDED:

#2 PHILLIPS DRIVER
AWL OR SIMILAR POINTED TOOL
UTILITY KNIFE
8MM SOCKET
1/2" WRENCH
3/16 ALLEN WRENCH
GREASE PENCIL

NOTE: FENDER FLARES ARE MARKED ON INSIDE AS TO FITMENT.

1-DRIVER FRONT
2-PASSENGER FRONT
3-DRIVER REAR
4-PASSENGER REAR

*Applies only to "Ruff Riderz" style flares only

Step 2: Installation

A) Edge Trim Installation:

1. Peel three inches of red backing away from edge trim adhesive and affix to outer edge of flare at one end.
2. Press edge trim into place along edge of flare in one-foot increments, pulling red backing free as you continue to work your way around the flare. (Figure 1)

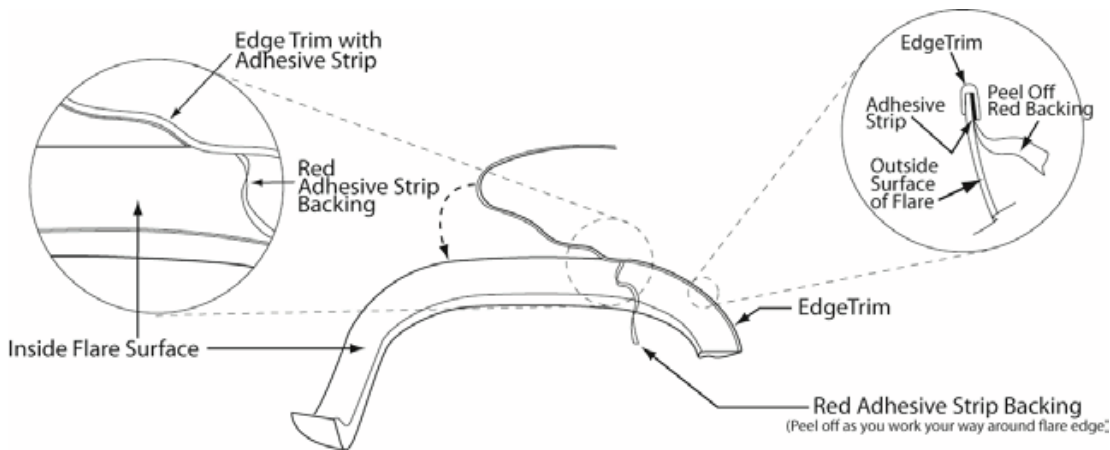


Figure 1

B) Bolt installation: (Applies only to "Ruff Riderz" style flares)

1. Place a 5/16 button head screw with a washer into each of the holes and attach to the flare using a nut placed on the inside. (Figure 2)
2. **Warning: Do not over tighten or use Loctite on the bolts as this will cause permanent damage to the flares. Bolts are decorative only and fasten only to the flares. Do not attempt to use the bolts to fasten the flares to the vehicle.**

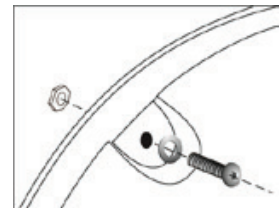


Figure 2

C) Front Flare Installation:

1. Remove factory fender flares, fender trim, and mud flaps if installed.
2. Test fit the flares to the vehicle and verify correct fitment before beginning further installation.
3. Using an 8mm socket remove the three factory screws from the front of the wheel arch molding noted in **Figure 3**. Save for reinstallation.
4. Hold the flare up to the vehicle and line the holes up in the flare with the factory holes on the vehicle.
5. While applying moderate pressure to the flare reinstall the 8mm factory screws from step 3 into the factory holes through the holes in the flare **Figure 4**.

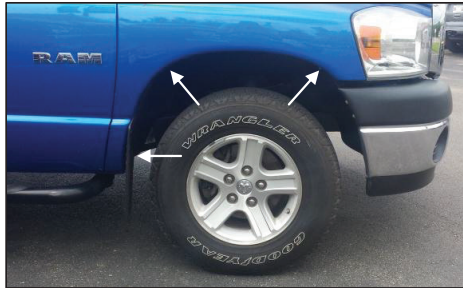


Figure 3



Figure 4

D) Rear Flare Installation:

1. Remove factory fender flares, fender trim, and mud flaps if installed.
2. Remove the two 8mm factory screws from the vehicle at the rear of wheel well as shown in **Figure 5**. Save for reinstallation



Figure 5

3. Tests fit the flare to the vehicle and verify correct part and fitment before beginning further installation.
4. Remove the white backing from black tabs and place half of the tab over the two factory holes at the front of the wheel well. Fold the other half over the fender lip as shown in **Figure 6**
5. Using an awl or similar pointed tool push it through the black tab and through the two factory holes as indicated in **Figure 7**.
6. Install a U-clip over the black tab so it is lined up with the two factory holes as indicated in **Figure 8**.



Figure 6

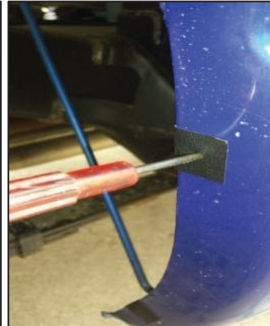


Figure 7

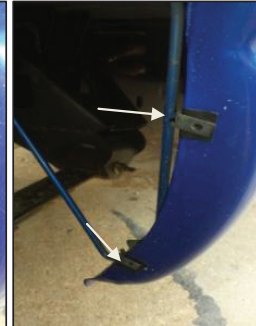


Figure 8

7. While holding flare into place mark the three holes towards the top of the flare with a grease pencil to determine the locations for installation of the two piece clips as shown in **Figure 9** and **Figure 10**.



Figure 9



Figure 10

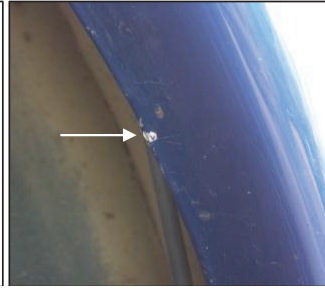


Figure 11

8. Remove white backing from black tabs and place half of the tab over the grease pencil mark and fold the other half over the fender lip **Figure 11**.



Figure 12



Figure 13

9. Insert CL1-0018 into the slot of the CL1-0019 and then press down as shown in **Figure 12**, **Figure 13** and **Figure 14** until the clip snaps into place. The two raised bumps on CL1-0018 will be on the inside of the assembled bracket making contact with CL1-0019.
10. Install the assembled two piece clip over the black tabs that were installed in step 8. Be sure to keep the flat side of the clip towards the bottom as shown in **Figure 15**.



Figure 14



Figure 15

11. Install the flare using the two factory screws at the rear of the flare removed in step 2 above and the supplied screws for the rest of the hole locations while applying moderate pressure to the flare. **Figure 16**

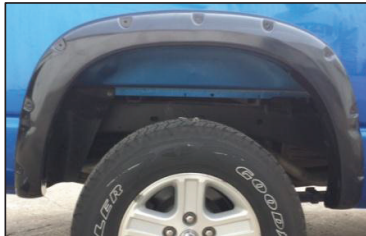


Figure 16