

TOOLS NEEDED:

#2 PHILLIPS SCREWDRIVER
DRILL
UTILITY KNIFE
T-15 TORX BIT
PENCIL (GREASE PENCIL)

3/16" ALLEN WRENCH*
1/2" WRENCH*

KIT CONTAINS:

4	FENDER FLARES
29'	EDGE TRIM
12	CL1-0018
12	CL1-0019
12	BLACK TABS
14	LONG SCREWS

2	SHORT SCREWS
4	MOUNTING BRACKETS
34	DECORATIVE STAINLESS STEEL BOLTS, NUTS, WASHERS*
*Used only for "Ruff Riderz" style flares	

INSTALLATION TIPS:

- Fender Flares are marked on the inside as to fitment as follows. 1-Driver Front • 2-Passenger Front • 3-Driver Rear • 4-Passenger Rear
- Read and understand all instructions before beginning installation.
- Take care not to over tighten the screws as damage can occur.
- To clean use only soapy water and a soft cloth. Do not use paper towels, petroleum products or solvents.

WARNINGS:

DO NOT OVER TIGHTEN OR USE LOCTITE ® ON THE BOLTS AS THIS WILL CAUSE PERMANENT DAMAGE TO THE FLARES. BOLTS ARE FOR DECORATIVE PURPOSES ONLY AND ONLY FASTEN TO THE FLARES. DO NOT ATTEMPT TO USE THE BOLTS TO FASTEN THE FLARES TO THE VEHICLE.

INSTALLATION INSTRUCTIONS:

• PAINTING

If painting is desired it is recommended to be done prior to installation.

Painted flares cannot be returned. Test fit before painting.

- (1) Sand before application of paint (optional)
- (2) Clean outer surface with a wax & grease remover. (do not use lacquer thinner or enamel reducer as a degreaser)
- (3) Wipe outer surface with a tack cloth.
- (4) Paint flares using a high quality lacquer, enamel, or polyurethane automotive paint. (application of a primer coat prior to painting is optional)
- (5) If painting edge trim (not recommended) use a flex additive.

• EDGE TRIM INSTALLATION

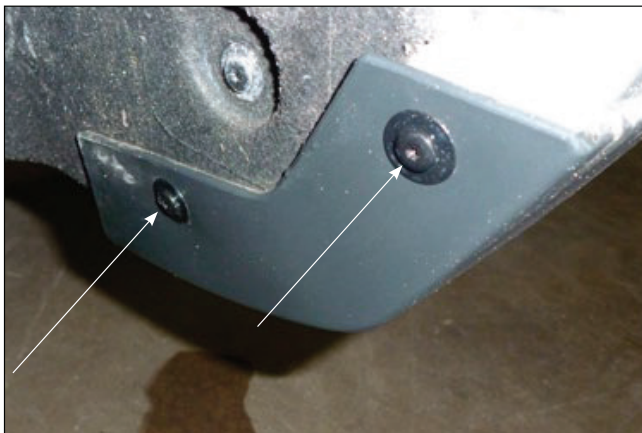
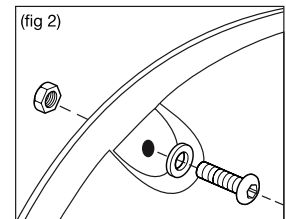
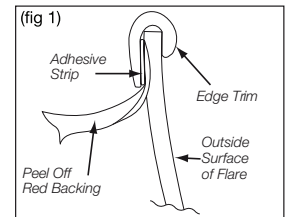
- (1) Peel three inches of red backing away from trim adhesive and affix to outer edge of flare at one end.
- (2) Press edge trim into place along edge of flare in one-foot increments, pulling red backing free as you continue to work your way around the flare. (fig.1)

• BOLT INSTALLATION (Decorative bolts are used only for the "RuffRider" style flares, for all others skip this step)

- (1) Place a 5/16 button head screw with a washer into each of the holes and attach to the flare using a nut placed on the inside. (fig 2)

• FRONT FLARE INSTALLATION

- (1) Remove any factory flares if installed.
- (2) Hold flare up to vehicle to ensure proper fitment before continuing installation.
- (3) While holding the flare into place mark the five hole positions in the flare onto the fender well lip with a grease pencil.
- (4) Remove the two factory screws from the mudguard at the rear of the wheel well (Fig 3) using a T-15 Torx bit. **Retain the hardware for installing the flares.**
- (5) Remove the two factory screws from the top of the inner wheel well (Fig 4) using a T-15 Torx bit. **Retain the hardware for installing the flares.**



(fig 3)



(fig 4)

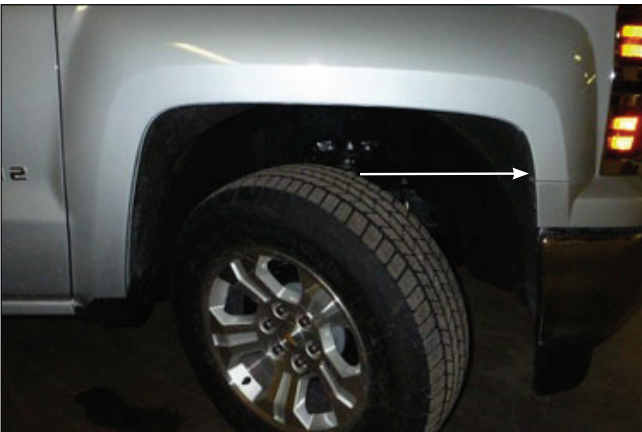
FRONT FLARE INSTALLATION (Cont.)

(6) Install a large mounting bracket into each of the top mounting locations on the front flare as shown in (Fig 5) using the included large screws.

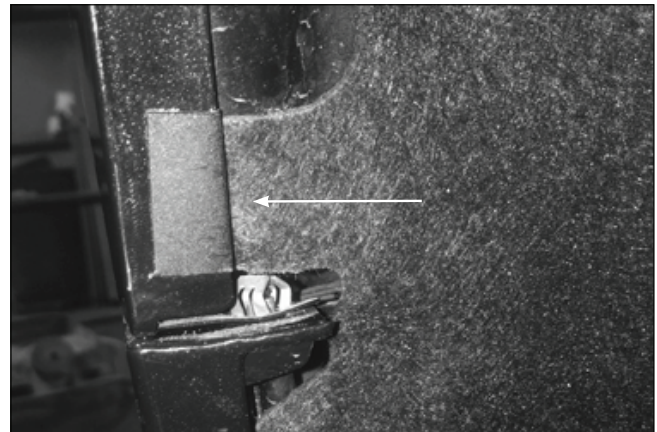


(fig 5)

(7) Remove the white backing from a black tab and install on to the lip of the fender as shown in (Fig 6-7).



(fig 6)



(fig 7)

(8) Insert CL1-0018 into the slot of CL1-0019 and then press down until the clip snaps into place (Fig 8-9). The two raised bumps on CL1-0018 will be on the inside of the assembled bracket making contact with CL1-0019.

(9) Install the assembled two piece clip over the black tabs that were installed in step 7. Be sure to keep the flat side of the clip towards the bottom (Fig 10)



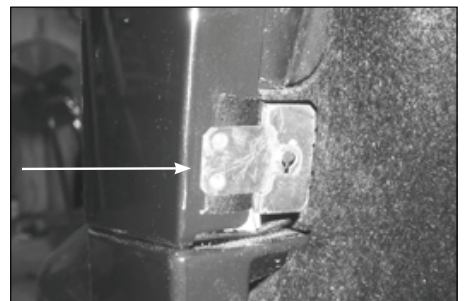
CL1-0019

CL1-0018

(fig 8)



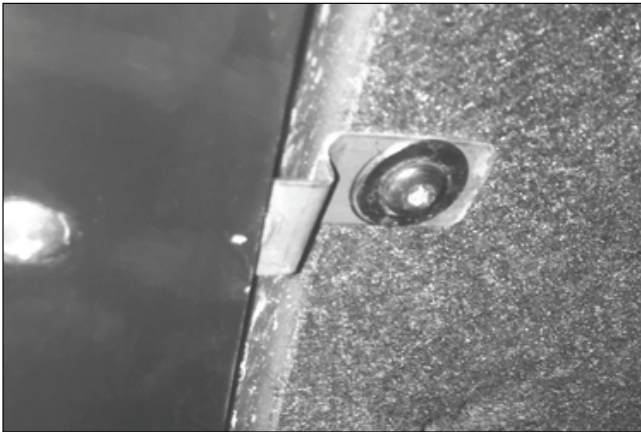
(fig 9)



(fig 10)

• **FRONT FLARE INSTALLATION (Cont.)**

(10) Hold the flare firmly in place and install the two screws removed from the top of the wheel well through the slots in the large mounting brackets and into the factory holes in the top of the wheel well. (Fig 11)



(fig 11)

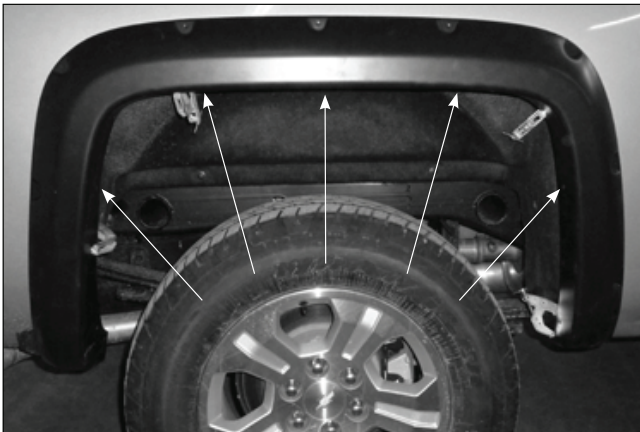


(fig 12)

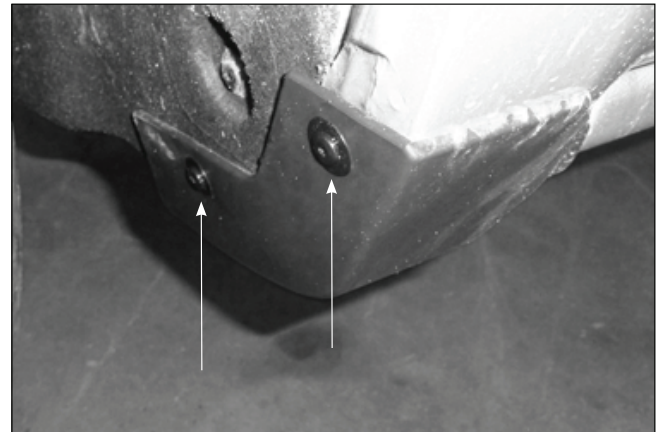
(11) Install the two screws removed from the mudguard through the two bottom rear holes in the flare and into the factory holes in the rear of the wheel well.
(12) Install one of the included short screws into the last hole in the front of the flare.
(13) Finish installation by applying moderate pressure to the surface of the flare while tightening all of the screws to ensure a tight fit to the fender.

• **REAR FLARE INSTALLATION**

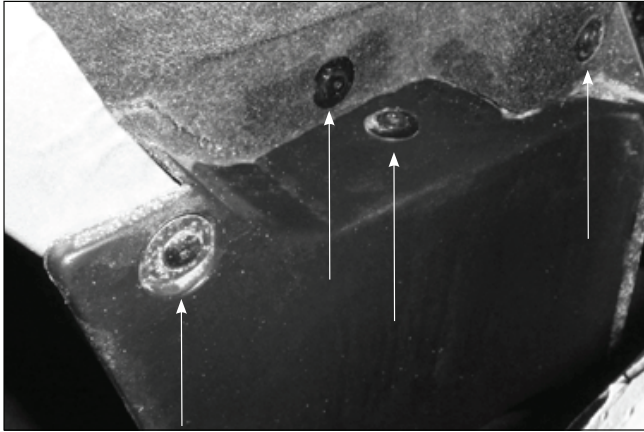
- (1) Remove factory flares and mud flaps if installed
- (2) Hold flare up to vehicle to ensure proper fitment before continuing installation.
- (3) While holding the flare into place mark the five hole positions indicated in (Fig 13) on the fender lip with a grease pencil.
- (4) Remove the two factory screws from the mudguard at the rear of the wheel well (Fig 14) using a T-15 Torx bit. **Retain the screws for installing the flares.**
- (5) Completely remove the factory mudguard from the front of the wheel well by removing the four factory screws indicated in (Fig 15). **Retain the screws for installing the flares.**
- (6) Only three of the six total factory screws removed in the previous steps will be reused in the installation of the flare.
The front mudguard will not be reinstalled into the truck.
- (7) Remove the white backing from the black tabs and install at each of the five locations marked with the grease pencil. (Fig 13)
- (8) Assemble the remaining CL1-0018 and CL1-0019 clip assemblies and install over each of the five black tabs. (Fig 10).



(fig 13)



(fig 14)



(fig 15)

• **REAR FLARE INSTALLATION (Cont.)**

- (9) Hold the flare firmly in place by lining up the bottom of the flare first. Start the two screws removed from the rear mudguard through the bottom rear holes in the flare and into the factory holes in the rear of the wheel well. **Do not tighten.**
- (10) With the flare still held firmly in place start a screw removed from the front mudguard in the lip of the fender well through the flare and into the factory hole in the front of the wheel well. **Do not tighten.**
- (11) With the three factory screws already started, apply firm pressure to the outside of the flare then install a long screw from the hardware kit into each of the five remaining holes and into the assembled clips from the previous steps.
- (12) Tighten all screws while applying moderate pressure to the surface of the flare to insure a tight fit.
- (13) Reinstall the three remaining screws removed from the front mudguard back into the truck securing the inner fender well.