

IMPORTANT: READ BEFORE INSTALLATION

Step 1: Prior to Installation

- A) Stampede Products only approves installing these Fender Flares according to these written instructions with the hardware provided. **WARNING:** Failure to install according to these instructions will invalidate the warranty. This includes, but not limited to using alternative installation methods, hardware, or materials. **DO NOT USE:** Loctite, SuperGlue, or similar products on the hardware or the flares.
- B) Inspect the Fender Flares thoroughly for defects or damage and verify the contents of package.
- C) Verify the fit of the flares to the vehicle. (Some filing, sanding, or cutting may be necessary to ensure proper fit).
- D) Painting (Optional): **PAINTED FLARES CANNOT BE RETURNED, TEST FIT BEFORE PAINTING.** If painting is desired it must be done prior to installing flares on vehicle. Clean outer surface

with a good grade degreaser. **DO NOT USE LACQUER THINNER OR ENAMEL REDUCER AS A DEGREASER.** Wipe outer surface thoroughly with a tack rag prior to paint. Application of plastic adhesion promoter for ABS plastic as per your paint system manufacturer's recommendations is required. Paint flares using a high quality enamel, or polyurethane automotive paint. If painting edge trim (not recommended) use a flex additive.

KIT CONTAINS:
(4) FENDER FLARES
(2) FRONT FENDER FLARE MOUNTING BRACKETS
(10) 6.3mm-1.81x20mm 10mm INDENTED HEX WASHER HEAD SCREWS
(4) PUSH PINS
(27) FEET OF EDGE TRIM
(31) DECORATIVE BOLTS NUTS AND WASHERS*
TOOLS NEEDED:
10mm SOCKET
3/16" HEX WRENCH*
1/2" HEX WRENCH*
UTILITY KNIFE
NOTE: FENDER FLARES ARE MARKED ON INSIDE AS TO FITMENT.
1-DRIVER FRONT
2-PASSENGER FRONT
3-DRIVER REAR
4-PASSENGER REAR

* Only included with "Ruff Riderz" style flares

Step 2: Installation

- A) Edge Trim Installation:
 - 1. Peel three inches of red backing away from edge trim adhesive and affix to outer edge of flare at one end.
 - 2. Press edge trim into place along edge of flare in one-foot increments, pulling red backing free as you continue to work your way around the flare. (Figure 1)

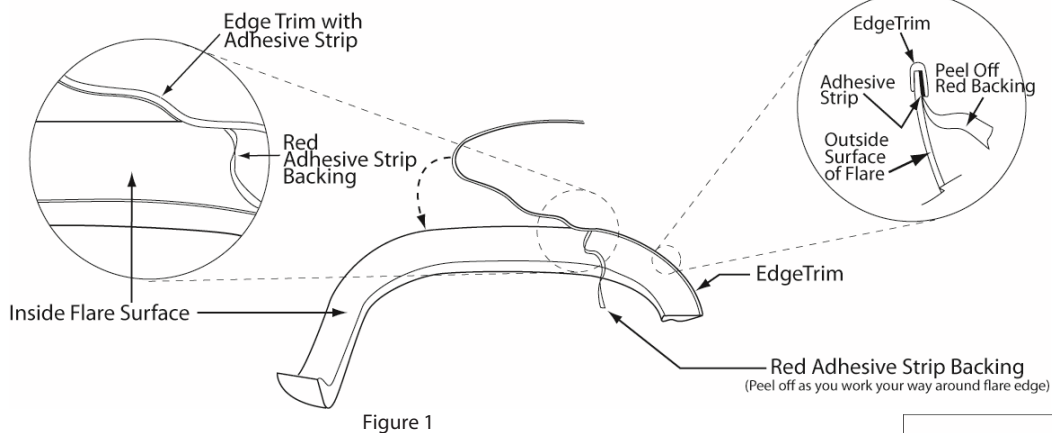


Figure 1

- B) Bolt installation: (Only applies to the "Ruff Riderz" style pocket flares, for all others skip to the next step).
 - 1. Place a 5/16 button head screw with a washer into each of the holes and attach to the flare using a nut placed on the inside. (Figure 2)
 - 2. **Warning:** Do not over tighten or use Loctite on the bolts as this will cause permanent damage to the flares. Bolts are decorative only and fasten only to the flares. Do not attempt to use the bolts to fasten the flares to the vehicle.

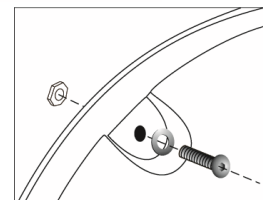


Figure 2

c) Front Flare Installation:

1. Remove the three factory screws from the mudflap at the rear of the wheel well (**Figure 3**) using a 10mm socket. Retain the hardware for installing the flares. Remove the push retainer from the underside of the mudflap and completely remove the mudflap.
2. Remove the two screws from the front of the wheel well using a 10mm socket (**Figure 3**). Retain the hardware for installing the fender flares.
3. Using two supplied screws mount the fender flare bracket to the truck using the existing holes in the top center of the wheel well as shown in **Figure 4**. The bracket marked LF mounts to the driver's side RF to the passenger side of the truck.
4. Hold the flare to the fender and align the holes in the top center of the flare with the two holes in the bracket and insert a push pin through the flare and into each hole in the bracket (**Figure 5**).
5. Attach the three factory screws from the mudflap into the three holes in the rear of the flare and into the three holes in the rear of the wheel well (**Figure 6**). Do not tighten.
6. Attach the two screws from the front of the wheel well through the two remaining holes in the front of the flare and into the factory holes that they were removed from (**Figure 6**). Do not tighten.

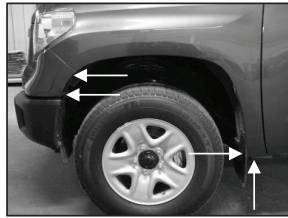


Figure 3

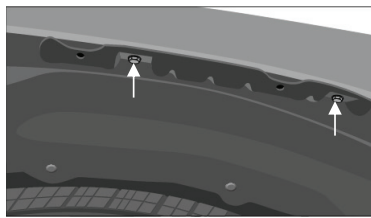


Figure 4

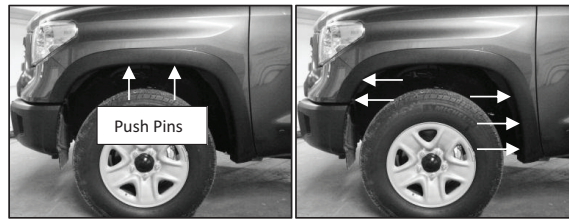


Figure 5

Figure 6

7. Verify proper alignment and fitment of the flare and while holding the flare firmly to the truck and tighten all the screws.

D) Rear Flare Installation:

1. Remove the five factory screws from the mudflap at the rear of the wheel well (**Figure 7**) using a 10mm socket. Retain the hardware for installing the flares. Remove the push retainer from the underside of the mudflap and completely remove the mudflap.
2. Place the flare to the truck and start the five factory screws from the mudflaps and three from the included hardware kit into the eight holes in the fender flare and into the factory holes in the truck (**Figure 8**). Do not tighten.
3. Verify proper alignment and fitment of the flare and while holding the flare firmly to the truck and tighten all the screws starting at the top of the flare and working your way down each side.



Figure 7

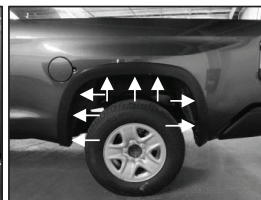


Figure 8