

**STACK
STACK[®]
STACK**

**WORLD CLASS
INSTRUMENTATION**

Pro-Control Stepper Motor Analogue Gauges

includes Sensor & Wiring Harness*

Stack's Pro-Control range of Professional Stepper Motor Analogue Gauges brings total control and driver awareness of critical engine functions. The Pro-Control series has all of the features of the Professional Stepper Motor Analogue Gauges (see right) plus:

- Configurable full dial colour change alarm warning.
- Peak "tell-tale" memory.
- Configurable backlight colour.
- 0-5V analogue output for data logger or ECU.
- Temperature gauges with built-in "fan controller".
- Pressure gauges with built-in "pump controller".
- Configurable Pro-Control output for activating accessories (requires relay).

NORMAL OPERATION

Any colour can be selected as backlighting. With a choice of 7 LED backlighting colours (white, red, yellow, green, blue, purple and turquoise) the user can choose the optimum colour for maximum visibility and readability of the gauge, day and night.



User-configurable minimum and maximum alarms can be set, with one of seven different colours assigned to each.

As soon as an alarm level is exceeded, the full dial face changes colour.

PRO-CONTROL ALARMS & OUTPUTS

As well as the user-configurable full dial colour change alarm warning, the Pro-Control feature activates an output at user defined low and high set points.

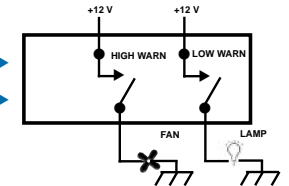


HIGH WARNING

Any colour can be selected as alarm.

OUTPUTS

The Pro-Control outputs can be used to switch on a relay to activate ignition kill, cooling fans, lamps, alarms, etc.



LOW WARNING

Any colour can be selected as alarm.



UNRIVALLED ACCURACY

Precision stepper-motor needle movements and solid-state sensors ensure better than 2% accuracy.



OIL PRESSURE

0-7 BAR ST3501
0-100 PSI ST3502



FUEL PRESSURE (LOW)

0-1 BAR ST3503
0-15 PSI ST3504



FUEL PRESSURE (HIGH)

0-7 BAR ST3505
0-100 PSI ST3506



WATER TEMPERATURE

40-120°C ST3507
100-260°F ST3508



OIL TEMPERATURE

40-140°C ST3509
140-280°F ST3510



BOOST PRESSURE

-1.0 to +2.0 BAR ST3511
-30inHg to +30 PSI ST3512



EXHAUST GAS TEMPERATURE

0-1100°C ST3513
0-2000°F ST3514



FUEL LEVEL**

Programmable ST3515



BATTERY VOLTAGE

8-18 V ST3516

*SENSORS & WIRING HARNESS INCLUDED

All Stack Pro-Control Stepper Motor Analogue Gauges come complete with wiring harness and associated solid-state sensor (except for Fuel Level and Battery Volts).

** Fuel Level gauge has 7 preset ranges and a universal-programmable calibration to suit all normal tank sensors with a resistance range of 0-280 ohms.

Wideband Air/Fuel - Lambda Digital Gauges

includes Sensor & Wiring Harness*

This is the ultimate tuning aid! Dual digital and radial LED displays provide accurate real-time readout of either air/fuel ratio or lambda (user-selectable).

A 0-4 Volt analogue output can be connected to a data-logger or to an ECU to provide real-time closed-loop feedback for improved mapping.

Supplied complete with wiring harness and includes Bosch Wideband sensor.

Black Dial Face ST3401
White Dial Face ST3402



- 0-4 Volt analogue output to feed a data acquisition unit or engine management system.
- User-selectable Air/Fuel or Lambda real time display.
- Programmable Alarm warns of dangerous lean condition.
- Peak Recall of leanest value during last run.
- Selectable for all fuel types with AFR from 6:1 to 20:1.

Professional Stepper Motor Analogue Gauges

includes Sensor & Wiring Harness*

These auxiliary instruments combine digital microprocessor precision with a high-precision stepper motor needle movement, to provide a new level of accuracy and reliability in 52mm gauges. They combine the durability and readability of 270° mechanical gauges with the easy installation and safe operation of conventional electric gauges. The full sweep dialface together with white LED through the dial backlighting and illuminated needle ensure excellent readability day or night.

WHITE & SILVER DIAL FACE OPTIONS ON SELECTED GAUGES!

By popular demand, selected gauges across the range are available with white or silver dial faces, white LED backlighting and orange illuminated needle.



52mm Gauge Mounts

Stack's new Gauge Roll Pods and Pedestal Mounts are the perfect solution for mounting 52mm Gauges for optimum driver visibility.

The heavy-duty Roll-Pods are vibration resistant, and will hold the gauges in a variety of positions.

Stack's Pedestal Mounts mean gauges can be mounted on the dash, under the dash or on the steering column.



(ST262121)

(ST264809)

OIL PRESSURE	FUEL PRESSURE (LOW)	FUEL PRESSURE (HIGH)	WATER TEMPERATURE	OIL TEMPERATURE
0-7 BAR BLACK ST3301 WHITE ST3351 SILVER ST3371	0-1 BAR BLACK ST3303 WHITE ST3353	0-7 BAR BLACK ST3305 WHITE ST3355 SILVER ST3375	40-120°C BLACK ST3307 WHITE ST3357 SILVER ST3377	40-140°C BLACK ST3309 WHITE ST3359 SILVER ST3379
0-100 PSI BLACK ST3302 WHITE ST3352 SILVER ST3372	0-15 PSI BLACK ST3304 WHITE ST3354	0-100 PSI BLACK ST3306 WHITE ST3356	100-260°F BLACK ST3308	140-280°F BLACK ST3310

BOOST PRESSURE	EXHAUST GAS TEMPERATURE	FUEL LEVEL*	BATTERY VOLTAGE	ANALOG CLOCK
-1.0 - +2.0 BAR BLACK ST3311 WHITE ST3361 SILVER ST3381	0-1100°C BLACK ST3313 WHITE ST3363 SILVER ST3383	PROGRAMMABLE BLACK ST3315 WHITE ST3365 SILVER ST3385	8-18 V BLACK ST3316 WHITE ST3366 SILVER ST3386	12 hour BLACK ST3317 WHITE ST3367 SILVER ST3387
-30inHg - +30 PSI BLACK ST3312	0-2000°F BLACK ST3314			

* Fuel Level gauge has 7 preset ranges and a universal-programmable calibration to suit all normal tank sensors with a resistance range of 0-280 ohms.
All Stack 52mm Professional gauges come complete with wiring harness and associated solid-state sensor (except for Fuel Level and Battery Volts).

Electric Analogue Gauges

includes Sensor*

These electric auxiliary instruments feature advanced 90° air-core movements and simple 3-wire installation. Electrical sensors keep hazardous fluids in the engine compartment.

White LED backlighting and illuminated needle ensure excellent readability day or night.

* Supplied complete with associated sensor (wiring not included).

OIL PRESSURE	WATER TEMPERATURE
0-7 BAR BLACK ST3201 WHITE ST3251 SILVER ST3271	40-120°C BLACK ST3207 WHITE ST3257 SILVER ST3277
0-100 PSI BLACK ST3202 WHITE ST3252	100-250°F BLACK ST3208
OIL TEMPERATURE	BOOST PRESSURE
60-150°C BLACK ST3209 WHITE ST3259 SILVER ST3279	0-2.5 BAR BLACK ST3211 WHITE ST3261 SILVER ST3281
140-300°F BLACK ST3210	0-35 PSI BLACK ST3212
BATTERY VOLTAGE	WATER TEMPERATURE
8-18 V BLACK ST3216 WHITE ST3266 SILVER ST3286	50-115°C BLACK ST3107 WHITE ST3108
	120-240°F BLACK ST3108
BOOST PRESSURE	BOOST PRESSURE
-1.0 - +2.0 BAR BLACK ST3111 WHITE ST3161 SILVER ST3181	-1.0 - +2.0 BAR BLACK ST3111 WHITE ST3161 SILVER ST3181
	-30inHg - +30 PSI BLACK ST3112 WHITE ST3162

Mechanical Analogue Gauges

This range of gauges have been specially designed for vehicles with no or low powered electrical systems. Temperature gauge include bronze bourdon tube 270° sweep movement.

White LED backlighting and illuminated needle ensure excellent readability day or night.

OIL PRESSURE
0-7 BAR BLACK ST3101
0-100 PSI BLACK ST3102
WATER TEMPERATURE
50-115°C BLACK ST3107
120-240°F BLACK ST3108
BOOST PRESSURE
-1.0 - +2.0 BAR BLACK ST3111 WHITE ST3161 SILVER ST3181
-30inHg - +30 PSI BLACK ST3112 WHITE ST3162

Clubman Tachometer

For the serious performance enthusiast, the 80mm sized Clubman features the unique, extremely rugged STACK stepper-motor movement, with Digital Quartz accuracy for unparalleled precision.

- Configurable for all negative earth and magneto ignition systems.
- Unique Stack Stepper-Motor Needle Movement.
- Unrivalled Digital Quartz accuracy guaranteed for life.
- Peak RPM 'Tell-Tale' memory.
- User adjustable shift light option (lamp not included).
- Exceptional reliability.
- Fully sealed against water and dust to IP67.
- Fits standard 80mm cut outs.
- Supplied with mounting bracket, switch kit, and user manual.
- Maintenance free White LED backlighting on all ST200.
- 1 year Competition Warranty.

(ST200)



CHOOSE FROM A RANGE OF RPM SCALES AND WHITE OR BLACK DIAL FACES



0-8,000 RPM
(Black or White)



0-4-10,500 RPM
(Black or White)



0-6-15,000 RPM
(Black or White)

OPTIONAL SHIFT LIGHTS



Panel Mount Red Shift Light
(ST537)



Dash Top Mount Red Shift Light
(ST534)

Classic Tachometers

Combining the best in modern technology with "Classic" styling to complement the car's original design.

Chronotronic™ 80mm Tachometers

- Accurate replica of original chronometric tachometer.
- Stepper-Motor Needle Movement re-creates 'chronometric' motion to 4000rpm.
- Chromed brass bezel.
- Maintenance-free white LED flood lighting.
- 0-10000 RPM dial face.
- Peak RPM 'Tell-Tale' memory.
- User adjustable shift light (lamp not included).
- Fully sealed against water and dust to IP67.
- 1 Year Competition Warranty.
- Configurable for all negative earth and magneto ignition systems.



(ST901096)

ST200 Classic Tachometers

Features classic styling and no backlighting. Other features as ST200, available in two sizes:

ST200C 80mm Classic Tachometer
Fits standard 80mm cut out.
Choose from a range of RPM scales:
0-8000 0-10000 0-12000
(ST200C)

ST230C 125mm Classic Tachometer
Fits standard 80mm & 115mm cut outs.
Choose from a range of RPM scales:
0-6000 0-8000
(ST230C)

(ST200C)



(ST230C)

Action Replay Tachometers

The Action Replay Tachometer provides the ideal introduction to data recording for oval, sprint, hill-climb and drag racing. The engine RPM for the last run (up to 25 mins) is recorded in a solid-state memory, and at the touch of a button can be re-played via the needle on the dial. 'Re-live' your last run as many times as you like, review your shift points, gearing and maximum RPM around the track with fast and slow modes to aid analysis.

- Unique Stack Stepper-Motor Needle Movement.
- Peak RPM 'Tell-Tale' memory.
- Maintenance free backlighting.
- Unrivalled digital quartz accuracy guaranteed for life.
- User adjustable shift light (included)
- Configurable for all negative earth ignition systems.
- 1 Year Competition Warranty.
- Supplied with mounting bracket, switch kit, removable professional wiring harness, shift light and manual.

(ST400)



(ST430)

ST400 80mm Tachometers

- Fits standard 80mm cut outs.
 - Choose from a range of RPM scales:
- | | |
|-----------|------------|
| 0-8000 | 0-6-13000 |
| 0-3-8500 | 0-10-20000 |
| 0-4-10500 | |

ST430 125mm Tachometers

- Monster 125mm (5") dial face.
 - Fits standard 80mm & 115mm cut outs.
 - Choose from a range of RPM scales:
- | | |
|---------|-----------|
| 0-8000 | 0-6-13000 |
| 0-10000 | |

Programmable Speedometers



Stack's Speedometers match our range of Professional Stepper Motor and Pro-Control gauges. Simple wiring connections and easy to use push button programming make installation and calibration simple. Compatible with most OE vehicle speed sensors, as well as aftermarket speed pulse generators. Includes backlit odometer and two resettable tripmeter displays.

- Fully user programmable.
- LCD odometer with a resettable trip displays.
- Maintenance free through the dial white LED backlighting.
- LED illuminated needle for maximum visibility.
- Available in black or white dial faces.
- Fits 85mm cutouts.
- Optional sensors available for some cable-drive applications.

ST3801 0-160 MPH/0-260 km/h (Black)

ST3851 0-160 MPH/ 0-260 km/h (White)

ST3802 0-260 km/h (Black)

ST3852 0-260 km/h (White)

ST668 Wheel speed sensor for ST3800 Speedometers

ST700 Integrated Dash Display Systems • Instruments



The ST700 Dash Display systems integrate tachometer, sequential shift light and voltmeter in a single 80mm instrument. Standard options include speedometer, lap timer and two pressure or temperature. In addition the ST700 can be fitted with a range of performance options, including an acceleration timer, infrared lap timing system, split time memory and straight and corner speed readout. Standard features include:

- Adjustable day & night backlighting levels to suit ambient light conditions.
- Fully sealed against water and dust to IP67.
- Peak value 'Tell-Tale' memory is provided on all monitored parameters.
- Configurable for all vehicle types and negative earth ignition systems.
- Supplied with mounting bracket, switch kit, separate professional wiring loom and manual.
- 1 year Competition Warranty.



0-8000 RPM

Standard (Black or White)



0-4-10500 RPM

Standard (Black or White)



0-6-15000 RPM

Standard (Black or White)



0-10750 RPM

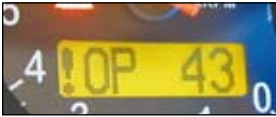
Optional (Black or White)



0-3-13000 RPM

Optional (Black or White)
(Cost Option)

INTELLIGENT ALARM SYSTEM



Intelligent alarms are provided on all of the monitored parameters. Alarm levels are adjustable to suit the individual vehicle requirements.

NEUTRAL GEAR INDICATOR



The dash can be simply connected to the neutral position switch of any sequential gear box - requires ST918051 harness.

SEQUENTIAL SHIFT LIGHT



Ultra bright LED's that can be set to operate in 4 different shift light patterns - Sequential, Sequential Blink, Bar and Simultaneous modes. Each light can be set independently; brightness adjustable to suit light conditions.

CONFIGURABLE INPUTS



The ST700 features two configurable channels that can be set up for a pressure (oil, fuel, boost or general purpose) or a temperature (oil, water, differential, axle or general purpose). Choose between standard and solid state sensor options.

ST700 OPTIONAL PERFORMANCE FEATURES

(Standard on some models)

LAP TIMING SYSTEM



The lap timing receiver simply plugs into the standard dash wiring harness. Each time the vehicle passes the track side beacon the lap time "pops up" on the graphic display to an accuracy of 1/100th of a second.

(ST546) OPTION

LAP & SPLIT TIME MEMORY



This feature records 75 Lap and Split Times (if Split Timing is activated) to help the driver evaluate their consistency.

(ST7090) OPTION

PERFORMANCE UPGRADE



Consists of the Split Time system and the Straight and Corner Speed readout options; providing real-time information that allows the driver to evaluate their own performance. Requires ST670 Speed Sensor and ST546 Lap Timing system.

(ST7093) OPTION

ACCELERATION TIMER

This feature will record Standing 1/4 mile/400m time, and acceleration/deceleration time between any chosen speeds. Requires ST670 Speed Sensor.

(ST7095) OPTION

SPEEDOMETER, ODOMETER & TRIPMETER

This option provides a street legal speedometer display readout with trip and odometer. The user can select MPH or km/h and miles or kilometres. Requires ST670 Speed Sensor.

(ST7094) OPTION

SPEED SENSOR

Simply plug this sensor into the wiring loom to display speed on the LCD readout.

(ST670) OPTION

Model	Speed (ST670)	RPM	Batt.	2x Config. Channels*	Neutral Indicator** (ST918051)	Lap Time (ST546)	Lap Memory (ST7090)	Perf. Upgrade (ST7093)	Accel. Timer (ST7095)	Odometer (ST7094)
ST700	OPTION	✓	✓	✓	OPTION	OPTION	OPTION	OPTION	OPTION	OPTION
ST700M	✓	✓	✓	✓	OPTION	✓	✓	✓	OPTION	OPTION
ST700SR	✓	✓	✓	✓	OPTION	OPTION	OPTION	OPTION	✓	✓

*Analog channels require optional Analog Sensor Harness (ST918049) **Neutral Indicator harness requires Analog Sensor Harness (ST918049)

ST700 SENSOR OPTIONS

(Note: these are not included with the dash system and must be ordered separately, with the ST918049 Sensor Harness.)

Standard Sensors	10 bar/150 PSI Pressure Sensor	M10 (ST744K)	1/8" NPTF (ST745K)
	-150 °C Fluid Temperature Sensor	M10 (ST762K)	1/8" NPTF (ST744K)
Solid-State Sensors	10 bar/150 PSI Pressure Sensor	M10 (ST747-M10)	1/8" NPTF (ST747-1/8"NPTF)
	-20 to 150 °C Temperature Sensor	M6 x 1 (ST769)	
	0 to 3.5 bar/50 PSI Boost Sensor	1/8" NPTF (ST740)	

Instruments • Integrated Dash Display Systems

The ST800 Dash Display System replaces all dashboard instruments - tachometer, oil pressure gauge, fuel pressure gauge, water temperature gauge, oil temperature gauge and voltmeter - with a single lightweight carbon composite display module.

OPTIONAL SEQUENTIAL SHIFT LIGHT MODULE



All Stack Dash Displays can drive the new Sequential Shift Light Module. Using the display menus, each of the 5 shift lights can be independently programmed to a specific RPM value, to provide complete flexibility. The Sequential Shift Light connects to the dash harness with just 3 wires, and is ideal for dash-top mounting. (ST539)

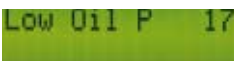
LIGHTWEIGHT CARBON COMPOSITE HOUSING

Fully sealed against water and dust to IP67 for maximum reliability year after year.

BRIGHT WHITE LED BACKLIGHTING

ensures clear viewing day and night.

INTELLIGENT ALARMS



Provided on all monitored parameters. Alarm levels are user adjustable to suit individual vehicle requirements. An internal alarm light is standard and an optional external light can simply be plugged into the dash harness.

WIDE CHOICE OF DIAL FACES

including Inverted Dial Faces. See Dial Face section below for more information.



ANALOGUE TACHOMETER

The preferred choice of most racers.

SUPER-BRIGHT WARNING LIGHTS

The dash features a user configurable and built-in, super-bright LED shift light. Additionally, an external dash top or panel mount shift light can be simply plugged into the dash harness.

TRANSFLECTIVE LCD BACKLIT DISPLAY

Contrast improves when under bright illumination - clearly visible in bright sunlight.

DRIVER SELECTABLE LCD DISPLAY LAYERS

Selectable layers show different engine and performance information. Maximum peak value 'Tell-Tale' memory is provided on Speed, Temperature parameters and RPM. Minimum peak value tell tales are provided on pressure and voltage parameters.

USER CONFIGURABLE INPUTS, DISPLAYS & ALARMS

The ST8916S System has 11 user-configurable sensor inputs and optional CAN ECU interface for maximum flexibility. The LCD display layers and alarms are also fully configurable (PC required for configuration).

HIGH ACCURACY SOLID-STATE PRESSURE & TEMPERATURE SENSORS



The solid-state pressure and temperature sensors are smaller, lighter, more accurate and more reliable. Solid-state pressure sensor (ST747) supplied as standard with all ST800 Dash Display Systems.

Action Replay Dash Display



Specifically designed to offer an alternative to PC-based data acquisition systems, the Action Replay Dash Display provides the ideal introduction to multi-channel data recording for oval, sprint, hillclimb and drag racing.

Record your RPM, speed (AR model only)*, temperatures, pressures and lap times* on the track. Back in the pits, you can replay the data on the Dash Display, showing the values for every point on the track.

The 'M' model provides the ultimate feedback tool, by replaying the Performance Meter & Predictive Lap Time to display exactly how much time was gained/lost, and where on the track.

- Replay of all engine parameters, and optionally speed & laptimes**
- Replay Performance Meter & Predictive Lap Time data (M model only).
- Alarms and laptimes pop-up on the display as they did while on-track.
- Records up to 15 runs, and up to 2 hours of data.
- Upgrade to full data logging with optional PC download/ software kit

(ST8100-AR / ST8100M-AR)

* Requires optional sensor at extra cost.

** See Performance Features section opposite page for more information.

Street & Track Dash Displays



(ST8130/ST8130P/ST8130M/ST8110SR)

These systems are designed for vehicles and motorcycles which must meet road legal requirements, and feature speedometer, odometer and trip meter. Each system includes all sensors (except fuel level sensor), mounting kit, switch kit, and professional ready-wired loom.

DIAL FACE OPTIONS

All models come with White LED backlighting as standard.

	0-8000 RPM	0-3-8000	0-4-10000	0-3-10500**	0-6-13000	0-3-8000 Inverted	0-4-10000 Inverted	0-6-13000 Inverted	0-10-22000**	0-8000 White	0-3-8000 White**	0-3-10500 White**	0-6-13000 White**
ST8100-UK	✓	✓	✓	✓	✓	✓	✓	✓	✓	✓**	✓	✓	✓
ST8100M-UK	✓	✓	✓	✓	✓	✓	✓	✓	✓	✓**	✓	✓	✓
ST8100-AR-UK	✓	✓	✓	✓	✓	✓	✓	✓	✓	✓**	✓	✓	✓
ST8100M-AR-UK	✓	✓	✓	✓	✓	✓	✓	✓	✓	✓**	✓	✓	✓
ST8130-UK	✓	✓	✓	✓	✓	✓	✓	✓	✓	✓	✓	✓	✓
ST8130P-UK	✓	✓	✓	✓	✓	✓	✓	✓	✓	✓	✓	✓	✓
ST8130M-UK	✓	✓	✓	✓	✓	✓	✓	✓	✓	✓	✓	✓	✓
ST8110SR-UK	✓	✓	✓	✓	✓	✓	✓	✓	✓	✓	✓	✓	✓
ST8916S	✓	✓	✓	✓	✓	✓	✓	✓	✓	✓**	✓	✓	✓

**Extra cost option



(ST8956SWD-270)

NEW for 2013, the ST8956SWD Steering Wheel Dash-Logger System replaces all dashboard instruments - tachometer, speedometer, gear number, pressure and temperature gauges, voltmeter and lap timing. The design uses the latest LED technology and is specially designed for vehicles such as Formula cars where a conventional dash system cannot be easily fitted. Supplied as standard with temperature and pressure sensors, the system can optionally be connected to 3rd party ECU's via CAN. The system has built-in data recording of all channels, and includes DataPro Analysis software.

Standard features include:

- Alarms and Peak Value Recall on all engine parameters.
- Performance Meter and Predictive Lap Time displays as standard.
- Fully configurable data recorder and DataPro analysis software.
- Gear display from gearbox sensor or automatic calculation from speed/RPM.
- High accuracy solid-state pressure and temperature sensors.
- Optional CAN interface to 3rd party ECU's.
- Fully configurable using the drag and drop PC configuration software.
- High intensity LED's ensure easy readability.
- Military specification connectors.
- Supplied complete with control module, all sensors and harnesses.

SATELLITE DISPLAY SYSTEM

Where space allows, the ST8956SD Satellite Dash-Logger system provides all of the features of the Steering Wheel Dash-Logger in a dash-mountable format. (ST8956SD)



COLOUR LED READOUTS 'AT A GLANCE'

Separate red and green LED readouts enable the driver to instantly identify specific information of interest.

9 STAGE SEQUENTIAL SHIFT LIGHT/TACHOMETER

The 9 sequentially illuminated ultra-bright shift lights provide a precise indication of engine RPM, and rate of change of RPM, enabling the driver to perfectly anticipate gear shift points.

Model	Display	Speed (ST670)	RPM	Oil Pres.	Fuel Pres.	Water Temp.	Oil Temp.	Gear No.	Lap Time	Lap No.	Lap Timing (ST546)	CAN Interface (ST918083)	Data Recording	Performance Meter / Predictive Lap Time
ST8956SWD-270	270mm Wheel	OPTION	✓	✓	✓	✓	✓	✓ [1]	✓ [2]	✓ [2]	OPTION	OPTION	✓	✓ [2]
ST8956SWD-340	340mm Wheel	OPTION	✓	✓	✓	✓	✓	✓ [1]	✓ [2]	✓ [2]	OPTION	OPTION	✓	✓ [2]
ST8956SD	Satellite Display	OPTION	✓	✓	✓	✓	✓	✓ [1]	✓ [2]	✓ [2]	OPTION	OPTION	✓	✓ [2]

[1] Requires appropriate gear position sensor, ST670 Speed Sensor or CAN ECU data . [2] Requires infra-red (ST546) lap timing kit.

PERFORMANCE FEATURES FOR DASH DISPLAY SYSTEMS

(Standard on some models)



SPEED SENSOR

Simply plug this speed sensor into the wiring loom to enable speed to be displayed on the LCD readout. (ST670)

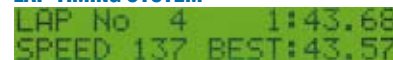
LAP TIME MEMORY



Available on the ST8100M and ST8100M-AR Systems only, this feature records every lap by session. Once back in the pits, the driver can review each lap time, starting at the fastest lap, on the LCD display.

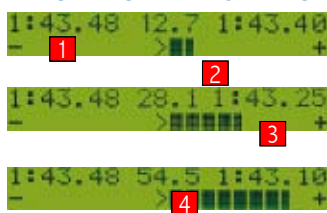


LAP TIMING SYSTEM



The lap timing receiver simply plugs into the standard dash wiring harness. When the vehicle passes the track side beacon the lap time "pops up" in the graphic display with an accuracy of 1/100th of a second. At any time the driver can select the Lap Time Display layer to show the Last Lap Time, Best Lap Time and number of laps driven.

PERFORMANCE METER & PREDICTIVE LAP TIMING SYSTEM



- | | | |
|----------|---|--|
| 1 | Best Previous Lap Time: Displays the fastest previous lap time. | Enables the driver to experiment with different lines through corners, with immediate visual feedback |
| 2 | Running Lap Time: Displays the time into the current lap. | Enables the driver to optimise qualifying, by giving early prediction of a fast lap, or a lap off the pace, which should be aborted. |
| 3 | Predicted Lap Time: Displays the current prediction of the next lap time. | Shows potential lap time when the driver cannot get a clear flag to flag lap in. |
| 4 | Performance Meter : Graphically displays the time difference between the current and best lap as an easy to read bar graph. | Functions as an in-car coach, continually setting pace for the driver to beat, and displaying how much time is lost each time a mistake is made. |

DISPLAY OPTIONS

* See Performance Features section above for more information.

	For Circuit racing	For Rallying	For Street/Road Racing	Total Inputs	RPM	Fuel Level	Speed (ST670)	Odometer & Tripmeter	Oil Pressure	Fuel Pressure	Water Temperature	Oil Temperature	Boost Pressure	Battery Voltage	CAN ECU Link Option (ST918083)	Sequential Shift Light (ST539)	Lap Timing (ST546)	Lap Memory	Predictive Lap Timer Display	Performance Meter Display	Action Replay Memory	Data Recording	Data Analysis Kit
ST8100-UK	✓	✓	✓	8	✓	OPTION	✓	✓	✓	✓	✓	✓	✓	✓	OPTION	OPTION	OPTION	✓	✓	✓	✓	✓	✓
ST8100M-UK	✓	✓	✓	8	✓	✓	✓	✓	✓	✓	✓	✓	✓	✓	OPTION	OPTION	✓	✓	✓	✓	✓	✓	✓
ST8100-AR-UK	✓	✓	✓	8	✓	OPTION	✓	✓	✓	✓	✓	✓	✓	✓	OPTION	OPTION	OPTION	✓	✓	✓	✓	✓	OPTION
ST8100M-AR-UK	✓	✓	✓	8	✓	✓	✓	✓	✓	✓	✓	✓	✓	✓	OPTION	OPTION	✓	✓	✓	✓	✓	✓	OPTION
ST8130-UK	✓	✓	✓	8	✓	✓	✓	OPTION	✓	✓	✓	✓	✓	✓	OPTION	OPTION	OPTION	✓	✓	✓	✓	✓	✓
ST8130P-UK	✓	✓	✓	8	✓	✓	✓	✓	✓	✓	✓	✓	✓	✓	OPTION	OPTION	OPTION	✓	✓	✓	✓	✓	✓
ST8130M-UK	✓	✓	✓	8	✓	✓	✓	✓	✓	✓	✓	✓	✓	✓	OPTION	OPTION	OPTION	✓	✓	✓	✓	✓	✓
ST8110SR-UK	✓	✓	✓	9	✓	✓	✓	✓	✓	✓	✓	✓	✓	✓	OPTION	OPTION	OPTION	✓	✓	✓	✓	✓	✓
ST8916S	✓	✓	✓	11	✓	8 FULLY CONFIGURABLE INPUTS & LAP-TIMING. CHOOSE PULSE OR 0-5V ANALOG SENSORS (NOT INCLUDED).								✓	OPTION	OPTION	OPTION	✓ [1]	✓	✓	✓	✓	

[1] Requires infra-red (ST546) lap timing kit.