



INSTALLATION INSTRUCTIONS

51208

REAR ANTI-SWAY BAR 06 MITSUBISHI ECLIPSE

CONGRATULATIONS!

You were selective enough to choose a **SUSPENSION TECHNIQUE** product. We have spent many hours developing our line of products so that you will receive maximum performance with minimum difficulty during installation

- Note: Confirm that all of the hardware listed in the parts list is in the kit. **DO NOT** begin this installation if any part is missing. Read the instructions thoroughly before beginning this installation.
- Warning:** **DO NOT** work under a vehicle supported by only a jack. Place support stands securely under the vehicle in the manufacturer's specified locations unless otherwise instructed.
- Warning:** **DO NOT** drive the vehicle until all work has been completed and checked. Torque all hardware to values specified.
- Reminder: Proper use of safety equipment and eye/face/hand protection is absolutely necessary when using these tools to perform procedures!
- Note: It is very helpful to have an assistant available during the installation process.
- Note: We **DO NOT RECOMMEND** using wheel ramps while performing this installation.

RECOMMENDED TOOLS:

- Blocks and Wheel chocks
- Properly rated floor jacks and support stands
- Ratcheting Socket Wrench
- Combination Wrench
- Safety Glasses

KIT INSTALLATION

1. Open the hardware kit and remove all the contents. Refer to the parts list (Page 3) to verify all parts are present.
2. Park the vehicle on a smooth, level concrete / asphalt surface and put the vehicle in gear or park. Place a block in front of and behind the front wheels. Jack up the rear of the vehicle and place the jack stands in the factory specified locations. Refer to the Owner's Manual.
3. Using a properly rated floor jack, lift the front wheels of the vehicle off the ground. Place the support stands, rated for the vehicle's weight in the factory specified locations. Refer to the vehicle Owner's Manual. Prior to lowering the vehicle onto the stands, make sure the supports will securely contact the chassis.
4. Slowly lower the vehicle onto the stands and, before placing the vehicle's entire weight on them, again check that they properly and securely contact the chassis as described above. Check for possible interference with any lines, wires, cables, or other easily damaged components.

IMPORTANT NOTE: The vehicle should be properly supported during this installation to prevent personal injury and chassis damage. Make sure that the support stands are properly placed prior to performing the following procedures. We **DO NOT RECOMMEND** using wheel ramps while performing this installation.

1. REMOVING THE ORIGINAL EQUIPMENT ANTI-SWAY BAR

- A.** Locate the Rear Suspension Lower Control Arms. There is one on each side of the car (**Photo 1**).
- B.** Un-bolt one end only and remove the hardware completely (**Photo 2**). Pivot the Lower Control Arm out of the way.
- C.** Using a 14mm wrench or an air ratchet with a 14mm socket head, un-bolt the mounting hardware and remove completely (**Photo 3**).

2. REMOVING THE END LINKS

- A.** Locate the end links at each end where the original equipment Anti-Sway Bar mounts to (**Photo 4**).
- B.** Using a 14mm wrench or an air ratchet with a 14mm socket head, un-bolt the mounting hardware and remove completely. On this particular set-up, using an allen-wrench to stop the end link shaft from spinning, helps in removing the mounting nut (**Photo 5**).

3. MOUNTING THE NEW ANTI-SWAY BAR

- A.** Using the kit supplied grease pack, grease the inside of the new polyurethane bushings. Locate them on the new Anti-Sway Bar at the same areas where the original equipment bushings were located on the original equipment Anti-Sway Bar (**Photo 6**).
- B.** Holding the new Anti-Sway Bar up to the mounting holes, mount the bushing brackets to their respective mounting holes. Finger-tight only (**Photo 7**).
- C.** Using the same mounting hardware, use the 14mm wrench and tighten (**Photo 8**).

4. RE-ATTACHING THE END LINKS TO THE NEW ANTI-SWAY BAR

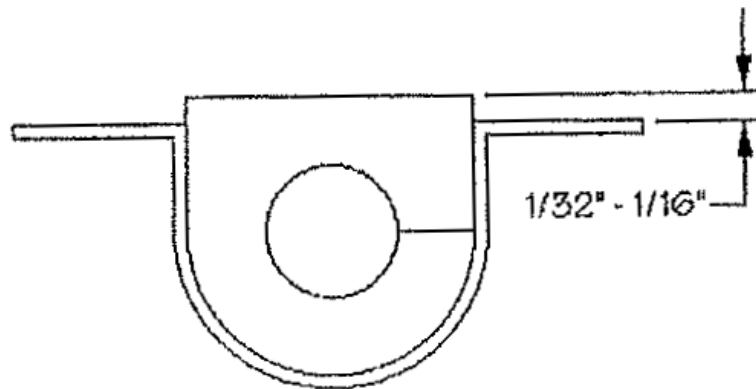
- A.** Attach the end of the Anti-Sway Bar to the end links, inserting the bolt shaft through the mounting hole of the Sway Bar (**Photo 9**).
- B.** Using the 14mm wrench, tighten to manufacturer torque specs.

PARTS LIST FOR ANTI-SWAY BAR KIT

PART No.	DESCRIPTION	QTY.
51208	Rear Anti-Sway Bar	1
113210	Bushing	2
114020	Bushing Bracket	2
55000-10	Grease Pack	1

INSTALLATION

Make sure a maximum of 1/32" to 1/16" of the bushing is showing when you install the bushing into the bracket. See the diagram below. If the bushing is showing more than 1/16", then use a belt sander or a sheet of coarse grit sand paper to shave it down to the proper height. In most applications you may refer to your original equipment Anti-Sway bar to locate the proper place the new bushing belongs on your new Anti-Sway Bar.



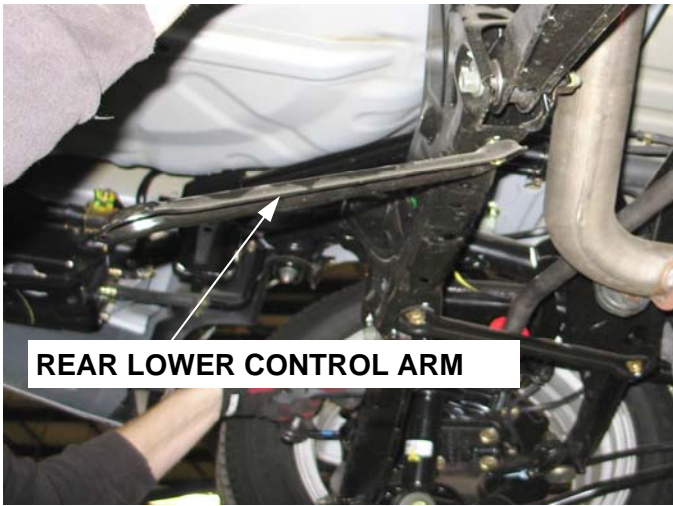


PHOTO 1



PHOTO 4



PHOTO 2



PHOTO 5

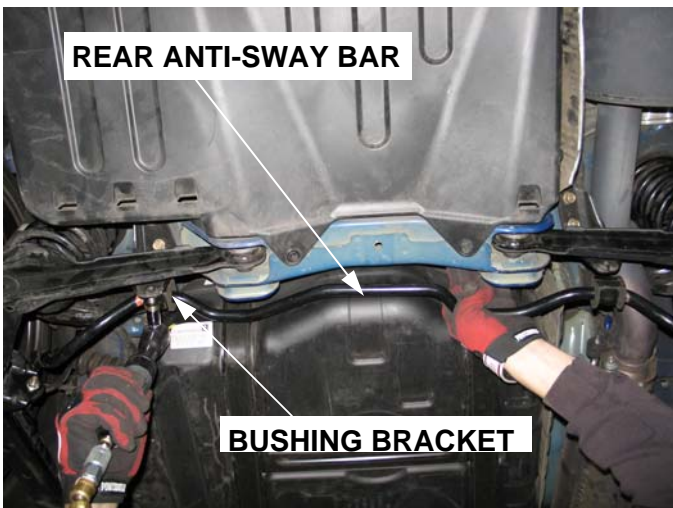


PHOTO 3



PHOTO 6



PHOTO 7



PHOTO 8



PHOTO 9