



INSTALLATION INSTRUCTIONS

51055
82-99 CHEVROLET CAMARO AND PONTIAC
FIREBIRD REAR ANTI-SWAYBAR

Congratulations! You were selective enough to choose a SUSPENSION TECHNIQUES PRODUCT. We have spent many hours developing our line of products so that you will receive maximum performance with minimum difficulty during installation.

- Note: Confirm that all of the hardware listed in the parts list is in the kit. Do not begin installation if any part is missing. Read the instructions thoroughly before beginning this installation.
- Warning: Do not work under a vehicle supported by only a jack. Place support stands securely under the vehicle in the manufacturer's specified locations unless otherwise instructed.
- Warning: Do not drive vehicle until all work has been completed and checked. Torque all hardware to values specified.
- Reminder: Proper use of safety equipment and eye/face/hand protection is absolutely necessary when using these tools to perform procedures!
- Note: It is very helpful to have an assistant available during installation.

RECOMMENDED TOOLS:

- Properly rated floor jack, support stands, and wheel chocks
- Combination wrench set
- Ratcheting socket wrench and socket sets
- Safety Glasses

KIT INSTALLATION

1. Open the hardware kit and remove all of the contents. Refer to the part list (Page 2) to verify that all parts are present.
2. Park the vehicle on a smooth, level concrete or seasoned asphalt surface and activate the parking brake. Block the FRONT wheels of the vehicle with appropriate wheel chocks; making sure the vehicle's transmission is in 1st gear (manual) or "Park" (automatic).
3. Using a properly rated floor jack, lift the REAR wheels of the vehicle off the ground. Place support stands, rated for the vehicle's weight, and in the factory specified locations. Refer to the vehicle Owner's Manual. Prior to lowering the vehicle onto the stands, make sure the supports will securely contact the chassis.
4. It is very important that the vehicle is properly supported during this installation to prevent personal injury and chassis damage! Make sure that the supports stands are properly placed prior to performing the following procedures. We DO NOT recommend using wheel ramps while performing this installation.

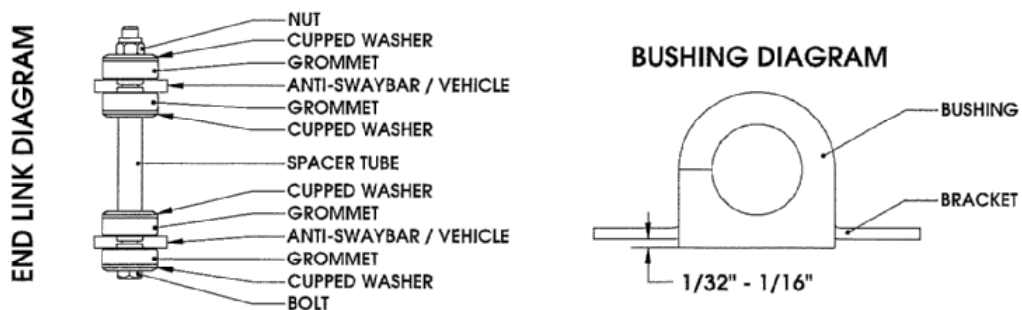
5. Slowly lower the vehicle onto the stands and, before placing the vehicle's entire weight on them, again check that they properly and securely contact the chassis as described above. Check for possible interference with any lines, wires, cables, or other easily damaged components.
6. Skip this step if your vehicle is not equipped with an original equipment rear anti-swaybar. Remove the end links from the ends of the original equipment anti-swaybar. Remove the U-clamps from the anti-swaybar. Note the position of the anti-swaybar in the vehicle to ease in the installation of your new Suspension Techniques anti-swaybar. Remove the original equipment anti-swaybar from the vehicle.
7. If your vehicle does not have an original equipment anti-swaybar you must purchase the adapter kit 55310. The brackets you receive in the kit mount on each side of the vehicle to the frame rail. Use the 3/8" self-tapping bolts to fasten the frame rail mount bracket to the existing holes in the frame rail. Tighten the bolts to 23 ft/lbs of torque. Note: Suspension Techniques recommends you coat these bolts with loctite before installing them.
8. Thoroughly lubricate the **inside** of your new hyper thane bushings using a high-grade lithium or silicone-based grease with molybdenum disulfide (moly). Place lubricated bushings on your new anti-swaybar. Refer to the diagram for fitment tips.
9. Position the anti-swaybar under the axle with the arms pointing forward. The Suspension Techniques anti-swaybar mounts in the same location and manner as the stock bar if so equipped. Install the U-clamps over the axle and **UNDER** the brake lines. **CAUTION: DO NOT CRUSH THE BRAKE LINE.** Fasten the center portion of the anti-swaybar to the axle using the U-clamp, flat plate and bushing brackets provided in the kit. Tighten the nuts on the U-clamps to 18 ft/lbs of torque (See diagram).
10. Install the wheels and lower the vehicle. Install end-links as shown in the diagram to the anti-swaybar and the frame rail mount bracket. Tighten the end-link bolt until the grommets begin to bulge but do not crush them. Installation of the end-links is easier if the suspension is loaded. You must load both sides of the vehicle at the same time or the installation will not be possible.
11. Check that all components and fasteners have been properly installed, tightened and torqued.
12. Check brake hoses, steering and other components for any possible interference.
13. Lift vehicle and remove support stands. Carefully lower vehicle to ground.
14. Immediately test-drive the vehicle in a remote location so that you can become accustomed to the revised driving characteristics and handling. Be aware that the vehicle will handle substantially different now that it has been modified.
15. Installation is complete. Check all of the hardware and re-torque at intervals for the first 10, 100, 1000 miles.

QTY.	PART NUMBER	DESCRIPTION
1	51055-300	REAR ANTI-SWAYBAR
2	114032	BUSHING BRACKET
2	114038	UNDER BUSHING SUPPORT PLATE
8	113000	END LINK GROMMET
2	113165	1" PIVOT BUSHING
2	112140	3/8" - 16 x 7" HEX HEAD CAP SCREW
8	112502	CUP WASHER
4	110625	3/8" SAE WASHER
6	110255	3/8" - 16 NYLOCK NUT
2	112276	U-CLAMP 2 1/2"
2	112422	SPACER TUBE 1/2" X .049 X 2.50"
1	55000-10	GREASE PACK

! Installation Tips ST

- **Lubrication**

Pre-lubricating the inside of the bushing before its installed is important because the lubrication will greatly reduce noise and it will increase bushing life. Suspension Techniques recommends you use Molybdenum disulfide. This will help protect the inside surface of the bushing and will last longer than most types of grease. Thoroughly lubricate the inside of the bushing with this grease.



- **Bushing Installation**

Make sure an amount of 1/32" to 1/16" of the bushing is showing when you install it onto the bracket. See the diagram above. If the bushing is showing more than 1/16" than use a sander or a sheet of coarse grit sand paper to shave it down to the proper height. In most applications when installing the new bushings on your Suspension Techniques anti-sway bar you may refer to your original equipment anti-sway bar to locate the proper location.

- **End Link Installation**

It is not required that you use lubricant on the end links since there is no rotational movement. The Suspension Techniques end links are comprise of grommets, cupped washers, a spacer tube, bolt, and lock nut, these assembled components create the end link. See end link diagram.