



## INSTALLATION INSTRUCTIONS

**51015**  
**REAR ANTI-SWAYBAR**  
**70-81 BMW**

**Congratulations! You were selective enough to choose a SUSPENSION TECHNIQUES PRODUCT. We have spent many hours developing our line of products so that you will receive maximum performance with minimum difficulty during installation.**

- Note:** Confirm that all of the hardware listed in the parts list is in the kit. Do not begin installation if any part is missing. Read the instructions thoroughly before beginning this installation.
- Warning:** Do not work under a vehicle supported by only a jack. Place support stands securely under the vehicle in the manufacturer's specified locations unless otherwise instructed.
- Warning:** Do not drive vehicle until all work has been completed and checked. Torque all hardware to values specified.
- Reminder:** Proper use of safety equipment and eye/face/hand protection is absolutely necessary when using these tools to perform procedures!
- Note:** It is very helpful to have an assistant available during installation.

### **RECOMMENDED TOOLS:**

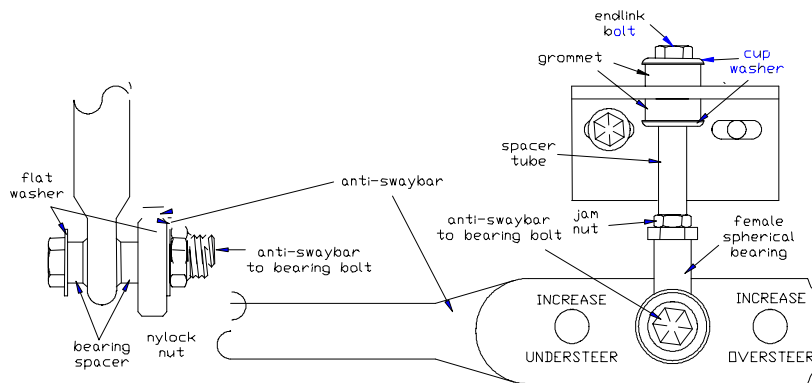
- Properly rated floor jack, support stands, and wheel chocks
- Combination wrench set
- Ratcheting socket wrench and socket sets
- Safety Glasses

### **KIT INSTALLATION**

1. Open the hardware kit and remove all of the contents. Refer to the part list (Page 3) to verify that all parts are present.
2. Park the vehicle on a smooth, level concrete or seasoned asphalt surface and activate the parking brake. Block the FRONT wheels of the vehicle with appropriate wheel chocks; making sure the vehicle's transmission is in 1<sup>st</sup> gear (manual) or "Park" (automatic).
3. Using a properly rated floor jack, lift the REAR wheels of the vehicle off the ground. Place support stands, rated for the vehicle's weight, and in the factory specified locations. Refer to the vehicle Owner's Manual. Prior to lowering the vehicle onto the stands, make sure the supports will securely contact the chassis.
4. It is very important that the vehicle is properly supported during this installation to prevent personal injury and chassis damage! Make sure that the supports stands are properly placed

prior to performing the following procedures. We DO NOT recommend using wheel ramps while performing this installation.

5. Slowly lower the vehicle onto the stands and, before placing the vehicle's entire weight on them, again check that they properly and securely contact the chassis as described above. Check for possible interference with any lines, wires, cables, or other easily damaged components.
6. Remove the end links from the ends of the original equipment anti-swaybar if so equipped. Note its position on the vehicle to ease the installation of the new anti-swaybar.
7. If the vehicle does not have an original equipment anti-swaybar, place the Suspension Techniques anti-swaybar on the ground or any flat surface. The correct mounting position is with the moment arms pointing toward the rear of the vehicle and the center portion of the anti-swaybar approximately 2" above the surface.
8. Thoroughly lubricate the **inside** of your new hyperthane bushings using a high-grade lithium or silicone-based grease with molybdenum disulfide (moly). Place the bushing on the new anti-swaybar. Refer to the original equipment anti-swaybar as to the proper bushing location.
9. Fasten the center portion of the anti-swaybar to the sub frame using the hardware provided.
10. Fasten the ends of the anti-swaybar to the control arms using the remaining hardware. Refer to the diagram provided as to the assembly sequence.



11. Check that all components and fasteners have been properly installed, tightened and torqued.
12. Check brake hoses, steering and other components for any possible interference.
13. Lift vehicle and remove support stands. Carefully lower vehicle to ground.
14. Immediately test-drive the vehicle in a remote location so that you can become accustomed to the revised driving characteristics and handling. Be aware that the vehicle will handle substantially different now that it has been modified.
15. Installation is complete. Check all of the hardware and re-torque at intervals for the first 10, 100, 1000 miles.

## PARTS LIST

### BMW REAR ANTI-SWAYBAR

QTY.	PART NUMBER	DESCRIPTION
1	51015-300	ANTI-SWAYBAR
2	113040	7/8" BUSHING
4	113000	END LINK GROMMET
2	51005-005	BUSHING BRACKET
2	112316	3/8" - 24 SPHERICAL BEARING JAM NUT
2	110255	3/8" - 16 NYLOCK NUT
2	112102	3/8" - 16 x 2" HEX HEAD CAP SCREW
4	112502	CUPPED WASHER
4	110625	3/8" SAE FLAT WASHER
2	112160	3/8" - 24 x 4" HEX HEAD CAP SCREW
4	110201	5/16" - 18 x 1" HEX HEAD CAP SCREW
4	110203	5/16" - 18 NYLOCK NUT
4	112412	SPACER TUBE 1/2" X .049 X .190"
2	112242	FEMALE SPHERICAL BEARING
2	112408	SPACER TUBE 1/2" X .049 X 1.50"
1	55000-10	GREASE PACK

## INSTALLATION

Make sure a maximum of 1/32" to 1/16" of the bushing showing when you install the it into the bracket. See the diagram below. If the bushing is showing more than 1/16" then use a belt sander or a sheet of coarse grit sand paper to shave it down to the proper height. In most applications you may refer to your original equipment anti-swaybar to locate the proper place the new bushing belongs on your new Anti-swaybar.

