



INSTALLATION INSTRUCTIONS

51002
REAR ANTI-SWAY BAR
1994-98 NEON

Congratulations! You were selective enough to choose a SUSPENSION TECHNIQUES PRODUCT. We have spent many hours developing our line of products so that you will receive maximum performance with minimum difficulty during installation.

- Note: Confirm that all of the hardware listed in the parts list is in the kit. Do not begin installation if any part is missing. Read the instructions thoroughly before beginning this installation.
- Warning: Do not work under a vehicle supported by only a jack. Place support stands securely under the vehicle in the manufacturer's specified locations unless otherwise instructed.
- Warning: Do not drive vehicle until all work has been completed and checked. Torque all hardware to values specified.
- Reminder: Proper use of safety equipment and eye/face/hand protection is absolutely necessary when using these tools to perform procedures!
- Note: It is very helpful to have an assistant available during installation.

RECOMMENDED TOOLS:

- Proper weight rated Floor Jack, Jack Stands, and Wheel Chocks
- Standard and Metric Open-End Box Wrenches
- Ratcheting Socket Wrench with Standard and Metric Sockets
- Torque Wrench: *10-75 lb. Ft. range*
- Rags and Cleaning Solvent

KIT INSTALLATION

1. Open the Hardware Kit and remove the contents. Refer to the Part List (Page 3) to verify that all parts are present.
2. Park the vehicle on a smooth, level concrete or asphalt surface and set the parking brake. Place a block in front of and behind the FRONT wheels. Using a properly rated jack, lift the REAR of the vehicle and place jack stands in the factory specified locations. Make sure the vehicle is properly supported before working beneath it.
3. Remove the rear wheels.
4. Vehicles equipped **with** factory rear anti-sway bar go to Step 5. Vehicles **not** equipped with factory rear anti-sway bar, skip to Step 6.
5. **For vehicles equipped WITH factory rear anti-sway bar**

Remove the original rear anti-sway bar and all of its related hardware. This includes the end-links, and the bolts attaching the pivot-bushing brackets to the sub frame. The hardware is 15mm. Remove the pivot-bushing brackets from the factory anti-sway bar for

later reuse (Photo 1). Note that the bushing brackets have a specific LEFT and RIGHT orientation.

- Remove the factory end-link adapter brackets from the rear strut assemblies by removing the nuts from the two lower strut mount bolts (Photo 2) attaching the strut to the upright, on each side of the vehicle. The bolt head is 15mm and the nut is 18mm. Do not remove the bolts from the struts.
- Install the LEFT (Driver's side) SUSPENSION TECHNIQUES end-link adapter bracket, as shown in Photo 3, in place of the stock component. Note that the brackets are different LEFT TO RIGHT. Reinstall nuts and torque bolts to 62 ft-lbs. Repeat these instructions for RIGHT side of vehicle.
- Use solvent and a rag to clean the mounting areas and pivot-bushing brackets to be reused when installing the SUSPENSION TECHNIQUES rear anti-sway bar.
- Go to step 7

6. **For vehicles NOT equipped with factory rear anti-sway bar:**

- Photo 4 shows the factory supplied RIGHT hand (Passenger's side) sub-frame mounting points for the anti-sway bar pivot-bushings and brackets. ALL vehicles are equipped with these mounting points, regardless of factory equipment. However, vehicles NOT equipped with a rear anti-sway bar require pivot-bushing brackets and hardware for this installation. These parts are supplied in Suspension Techniques Adapter Kit #55335.
- Use solvent and a rag to clean the mounting points described above.
- Remove the nuts from the two lower strut mount bolts (Photo 2) attaching the strut to the upright, on each side of the vehicle. The bolt head is 15mm and the nut is 18mm. DO NOT remove the bolts from the struts.
- Install the LEFT (Driver's side) SUSPENSION TECHNIQUES end-link adapter bracket, as shown in Photo 3. Note that the brackets are different LEFT TO RIGHT. Reinstall nuts and torque bolts to 62 ft-lbs. Repeat these instructions for RIGHT side of vehicle.
- Go to step 7.

7. Hold the new Suspension Techniques anti-sway bar up to the vehicle to confirm its' orientation. It is shaped slightly different than the original bar and it will ease the installation to note its proper orientation prior to proceeding further. **Note:** The central bend area of the anti-sway bar points down to clear the spare tire well.

8. Thoroughly lubricate the inside of the new polyurethane bushings using the lubricant provided. Place the bushings on the Suspension Techniques anti-sway bar and locate them so that they will align with the pivot-bushing bracket sub-frame mounting locations described above.

Note: WD-40™ is recommended to help remove excess lubricant.

9. With the required hardware easily accessible, and the anti-sway bar properly oriented, place the bar under the vehicle and move the LEFT side above the exhaust system. Hook the pivot-bushing brackets into the locating holes (Photo 5: anti-sway bar removed for clarity). Be sure to have the LEFT and RIGHT pivot-bushing brackets properly located so that the boltholes align with threaded holes in sub-frame. Lift the assembly into position and place the bushing brackets over the pivot-bushings. Install the attaching bolts with washers finger tight. Do not tighten these bolts until instructed to (see below).

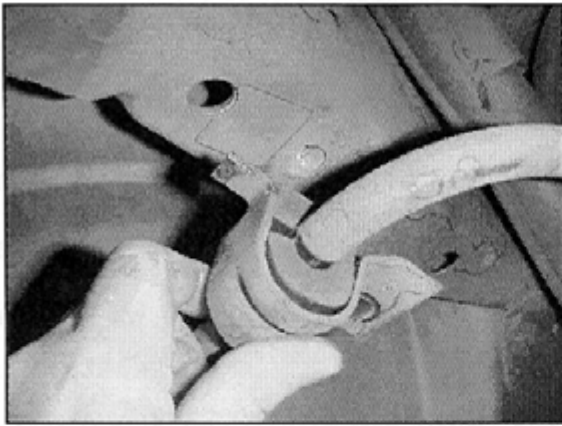
10. Assemble the end-links as follows (refer to Figure A and Photo 6):

- Install cup washer (p/n 112502) and end-link grommet (p/n 113000) onto 3/8-24 x 4" end-link bolt (p/n 112160). Insert bolt assembly through LEFT anti-sway bar eye from the top.
 - Install second end-link grommet and cup washer onto end-link bolt from bottom. Install spacer tube (p/n 112406) onto bolt while holding end-link assembly to anti-sway bar.
 - Thread 3/8-24 jam-nut (p/n 112316) onto bolt and tighten, against spacer tube, with wrenches. The hardware is 9/16". Tighten nut until grommets just begin to bulge but DO NOT OVERTIGHTEN.
 - Thread female rod-end (p/n 112242) onto bolt and tighten, against jam-nut, with wrenches.
 - Place 3/8-16 x 1 3/4" bolt (p/n 112100) with washer through rod-end bearing eye from the inside (threads pointing towards outside of vehicle). Install spacer (p/n 112450) onto bolt.
 - Align bolt with hole in strut mounted end-link adapter bracket installed in Step 5 or 6 above. Insert bolt through hole in adapter bracket, install washer and locknut and tighten with wrenches. The hardware is 9/16". Torque bolt to 30 ft-lbs.
 - Repeat above instructions for RIGHT side of vehicle.
11. Tighten and torque the pivot-bushing bracket bolts installed in Step 9 above. Check that there are no areas of interference between the anti-sway bar and chassis.
- Note:** All hardware being fastened to the vehicle's original sub-frame fastening points should be torqued to the Manufacturer's specifications. To prevent chassis damage, never over-torque this hardware.
12. Reinstall rear wheels. Torque lug nuts to Manufacturer's specifications. Re-check all hardware for proper torque.
13. Test-drive the vehicle. Check all fasteners after 10, 100, and 1000 miles.

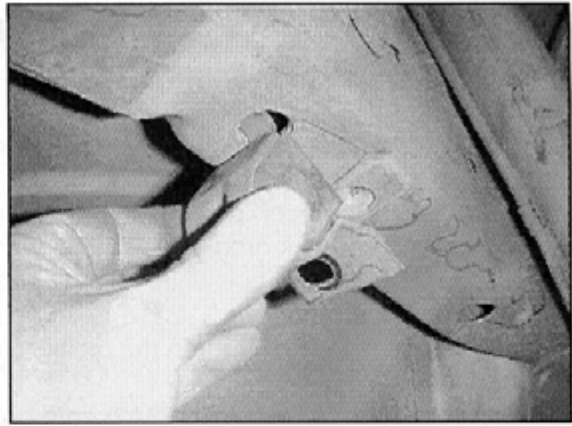
PARTS LIST FOR 51002-777 HARDWARE KIT

#	PART #	PART DESCRIPTION	QTY
1	51002-300	Rear Anti-Sway Bar	1
2	51002-001	LH End-Link Adapter Bracket	1
3	51002-002	RH End-Link Adapter Bracket	1
4	112242	3/8" Female Rod-End	2
5	112316	3/8-24 Jam Nut	2
6	113000	End-link Grommet	4
7	112502	End-link Cup Washer	4
8	112406	3/8 x 1 1/4 " Tubular Spacer	2
9	112160	3/8-24 x 4" H.H.C.S.	2
10	51002-020	Pivot Bushing	2
11	112450	3/8" x 1/2" Tubular Spacer	2
12	110625	3/8" SAE Washer	6
13	112100	3/8-16 x 1 3/4" H.H.C.S.	2
14	110255	3/8-16 Locknut	2
15	55000-10	Grease Pack	1

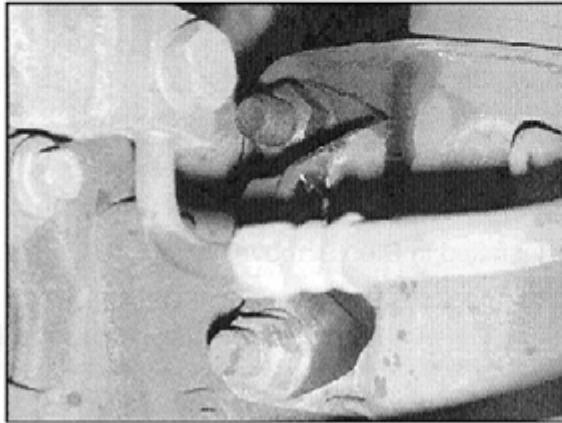
1



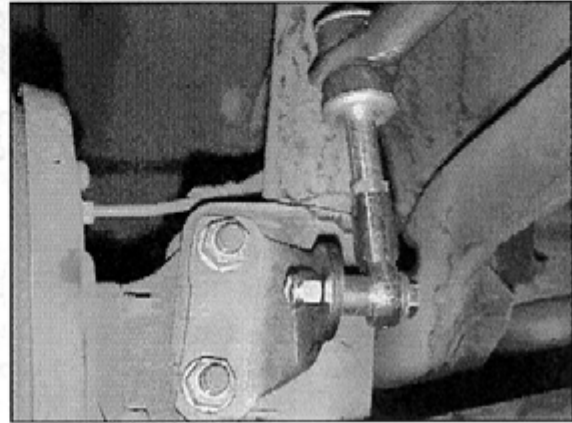
5



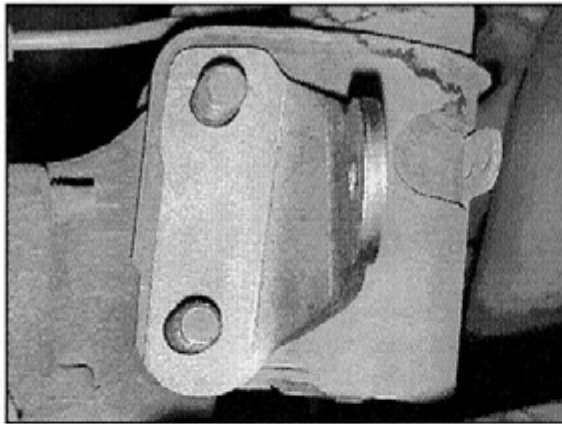
2



6



3



4

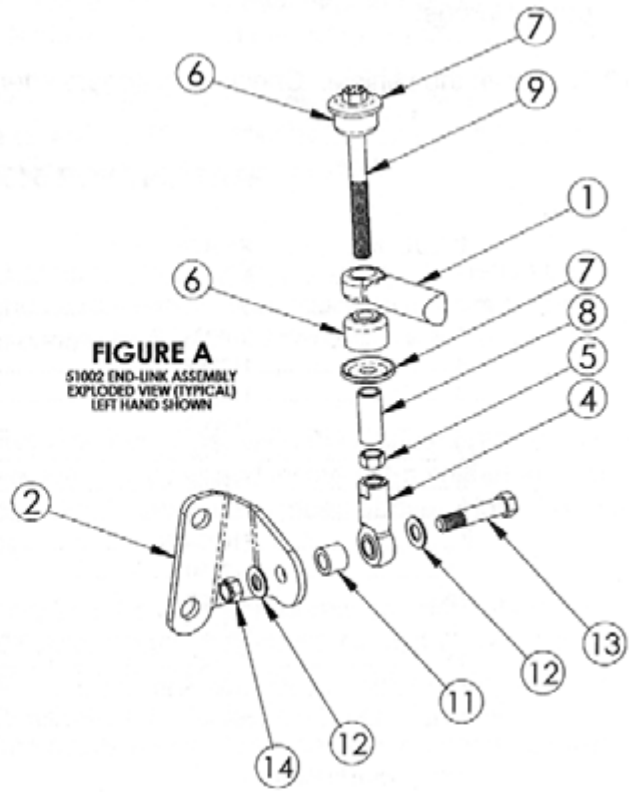
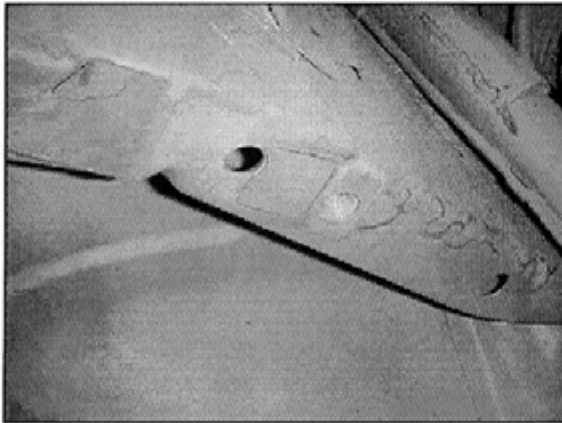


FIGURE A
 51002 END-LINK ASSEMBLY
 EXPLODED VIEW (TYPICAL)
 LEFT HAND SHOWN