



INSTALLATION INSTRUCTIONS

50225

FRONT ANTI-SWAY BAR
1990-95 TOYOTA MR2

Congratulations! You were selective enough to choose a SUSPENSION TECHNIQUES PRODUCT. We have spent many hours developing our line of products so that you will receive maximum performance with minimum difficulty during installation.

- Note: Confirm that all of the hardware listed in the parts list is in the kit. Do not begin installation if any part is missing. Read the instructions thoroughly before beginning this installation.
- Warning: Do not work under a vehicle supported by only a jack. Place support stands securely under the vehicle in the manufacturer's specified locations unless otherwise instructed.
- Warning: Do not drive vehicle until all work has been completed and checked. Torque all hardware to values specified.
- Reminder: Proper use of safety equipment and eye/face/hand protection is absolutely necessary when using these tools to perform procedures!
- Note: It is very helpful to have an assistant available during installation.

RECOMMENDED TOOLS:

- Minimum of a 2-Ton Floor Jack, Support Stands and Wheel Chocks
- Torque wrench: *0-75 lb ft range*
- Ratcheting Socket Wrench with Shallow or Deep Sockets- 10, 12, 14mm
- Safety Glasses

KIT INSTALLATION

1. Open the hardware kit and remove all the contents. Refer to the part list (Page 3) and Photo 1 to verify all parts are present.
2. Park the vehicle on a smooth, level concrete or seasoned asphalt surface and activate the parking brake. Block the REAR wheels of the vehicle with appropriate wheel chocks; making sure the vehicle's transmission is in 1st gear (manual) or "Park" (automatic).
3. Using a properly rated floor jack, lift the front wheels of the vehicle off the ground. Place support stands, rated for the vehicle's weight, and in the factory specified locations. Refer to the vehicle Owner's Manual. Prior to lowering the vehicle onto the stands, make sure the supports will securely contact the chassis.

It is very important that the vehicle is properly supported during this installation to prevent frame damage and personal injury! Make sure that the supports stands are properly placed prior to performing the following procedures. We do not recommend using wheel ramps while performing this installation.

4. Slowly lower the vehicle onto the stands and, before placing the vehicle's entire weight on them, again check that they properly and securely contact the chassis as described above.

Check for possible interference with any lines, wires, cables, or other easily damaged components. Remove the front wheels.

5. Using a 10mm socket, remove the ten (10) 6mm screws fastening the splashguard to the under side of the vehicle (Refer to Photos 2, 3 and 4).
6. Using a 12mm socket, remove the hardware fastening the anti-sway bar to the chassis (Photo 5). Save this hardware for later reuse.
7. Remove the hex nuts that attach the end-links to the anti-sway bar (Photo 6 and 7). Save this hardware for later reuse. Remove the anti-sway bar from the vehicle.
8. Using a 17mm socket, remove the original sub frame support hardware located just forward of the anti-sway bar mounting points (Photo 8 and 9). These bolts will be reused in the next step.
9. The sub frame support bolts pass through holes at the ends of the new anti-sway bar support plates. The ½" washers (P/N 110660) supplied in the kit must be placed between the support plates and the sub frame (Photo 10). Loosely fasten the plates to the sub frame, being careful not to cross thread the hardware. The original sub-frame supports will remain intact.
10. With the support plates in place (Photo 11), check the alignment of the threaded holes in the chassis and the two holes in the plates. Before continuing, clean the mounting surfaces.

Important Note: Stock (unaltered) 2nd generation MR2's have a history of tearing out the sheet-metal chassis anti-sway bar mounting locations. Carefully inspect these areas for any cracks, tears or other damage. The new support plates are designed to help reduce the chance of damage occurring, not to prevent additional damage if it has already occurred! If repairs have been made (Photo 12), the mounting surface must be smooth and free of imperfections before installing these components. Some grinding and/or forming may be required (Photo 13).

11. Lubricate the inner surfaces of the bushings with the grease provided. Install the bushings over the anti-sway bar in the same locations as the original bar (Photo 14).

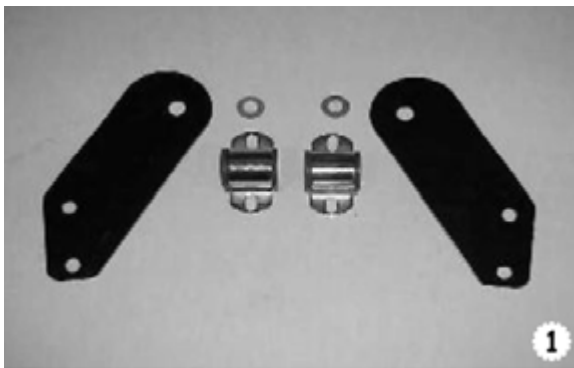
WD-40™ is recommended to help remove excess lubricant.

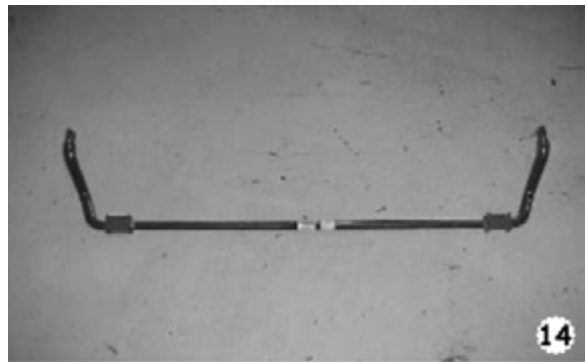
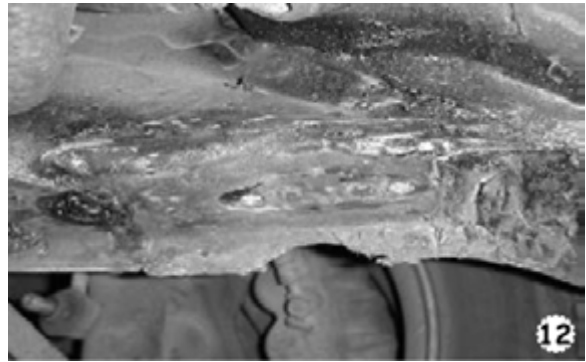
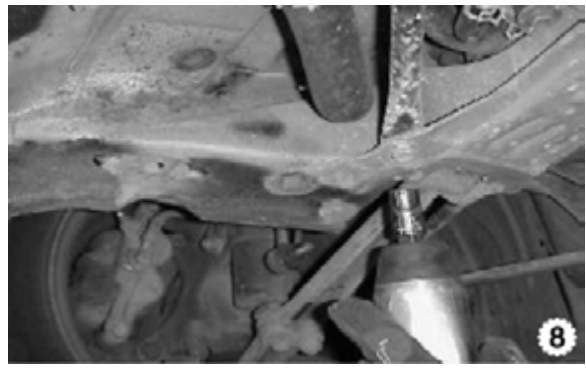
12. With the support plates in place, position the Suspension Techniques anti-sway bar in the same position and orientation as the original. Attach the end-links using the original hardware (Photo 15 and 16).
 13. Place the new bushing brackets onto the bushings and align the holes. Use the original hardware to fasten the anti-sway bar to the chassis (Photo 17). Before tightening, adjust the bar side-to-side so that it is centered. The slotted bushing brackets allow some adjustment forward and backward. Tighten and torque hardware to 12 lb ft (Photo 18).
 14. Tighten and torque the sub frame support hardware to 20 lb ft (Photo 19).
 15. Install the splashguard. Tighten and torque the screws to 6 lb ft (Photo 20).
- ! Two of the original ten-splashguard screws will not be reused, as the holes are located under the new support plates.
16. Check that all components and fasteners have been properly installed, tightened and torqued.
 17. Reinstall the front wheels and tighten and torque the lug nuts to the Manufacturer's specifications.
 18. Immediately test-drive the vehicle in a remote location so that you can become accustomed to the revised driving characteristics and handling. Be aware that the vehicle will handle substantially different now that it has been lowered.

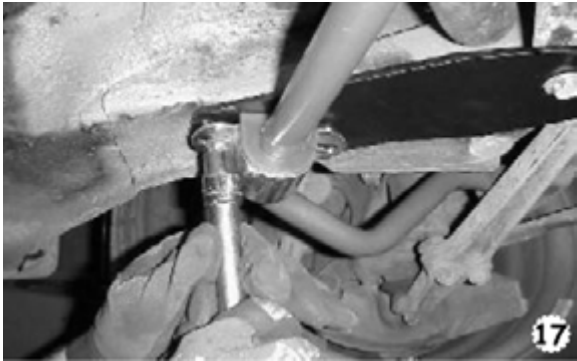
19. Installation is complete. Check all of the hardware and re-torque at intervals for the first 10, 100, 1000 miles.

PART LIST FOR 50225 ANTI-SWAY BAR KIT

PART#	DESCRIPTION	QTY
50225-300	Front Anti-sway Bar	1
113042	Urethane Pivot Bushing	2
114030	Bushing Bracket	2
50225-001	Adapter Plate- right	1
50225-002	Adapter Plate- left	1
110660	½" Heavy Flat Washer	2
55000-10	Grease Pack	1







INSTALLATION

Make sure a maximum of $1/32"$ to $1/16"$ of the bushing showing when you install the it into the bracket. See the diagram below. If the bushing is showing more than $1/16"$ then use a belt sander or a sheet of coarse grit sand paper to shave it down to the proper height. In most applications you may refer to your original equipment anti-swaybar to locate the proper place the new bushing belongs on your new Anti-swaybar.

