

# INSTALLATION GUIDE WHEEL SPACERS



**ST**<sup>®</sup>  
SUSPENSIONS

SYSTEM **DZ**X

## System DZ<sup>X</sup>

5 / 7.5 / 10 / 12.5 / 15 / 17.5 / 20 / 22.5 or 25 mm per wheel

Through-hole system with multi bolt holes and patented center adapters for cars with wheel bolts AND wheel studs. For Spacers up to 10 mm per wheel the wheel spacer is precisely centered on the wheel hub with the flat center adapter. From 12.5 mm per wheel the short center adapter offers a double centering on the wheel hub and for the rim which guarantees an optimal concentricity. Multi bolt holes enable use on cars with 4, 5 and 6 hole patterns and additionally on up to 12 different bolt hole diameters. Longer wheel bolts or ST shaft nuts and fitting adapters are required. (Please order separately if not mentioned differently).

Box Contents:

2 wheel spacers system DZX

Sold Separately:

2 center adapters



## ATTENTION!

### Range of use

Before installation please check if the wheel spacers are approved for the intended application. If the vehicle is not listed in the parts approval the installation must be done by an expert. The individual approval must be done by a state-approved expert in accordance to §21 in connection with §19.2 of the road traffic licensing authority (StVZO).

### Parts Approval

No parts approvals are attached to the box. Certificates can be downloaded on our website.



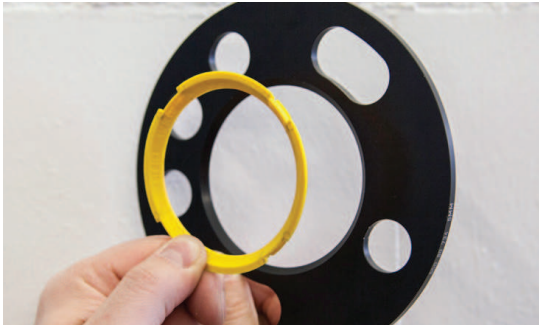
### 1. Remove Wheel

Remove the wheel as described by vehicle manufacturer.



## 2. CLEAN WHEEL HUB

Clean the wheel hub carefully with a steel brush if necessary.



## 3. Assemble Adapter

Put the center adapter into the wheel spacer. The adapter is put into the spacer disc on the side with a bevel. The collar of the center adapter should not protrude behind the wheel spacer disc. See page 9 Abb. 1 to 4.





#### 4. Check contact surface

Check if the wheel spacer fits on the wheel hub and to the rim without any play or float and that the hole pattern fits properly.

#### ATTENTION!

Before installation on cars with wheel studs please check if the shaft of the shaft nut fits through the bolt holes of the rim! See page 10 Abb. 5.

Additionally you must also check that the shaft of the shaft nuts is not any longer than the thickness of the wheel spacer after the shaft nut has been put into the rim. See page 10 Abb. 6 and 7.



### **5.1 Mount wheel for Cars with wheel Bolts**

Mount the wheel as described by the vehicle manufacturer. Please consider the minimum thread engagement. See page 7.

### **5.2 Mount Wheel for cars with wheel studs**

Mount the wheel as described by the vehicle manufacturer using the ST shaft nuts. Please consider the minimum thread engagement. See page 8.

**ATTENTION!**

**Longer wheel bolts must be used with wheel spacers** (not included in spacer kit). **Additional bolt length should be equal to spacer size.**

Wheel hubs can be damaged by excessively long bolts. Ensure wheels spin freely by hand after installation.

**ATTENTION!**

Use torque spec for the rim as described by the vehicle manufacturer or parts approval of the rim manufacturer. **Never use an impact gun!**

**Minimum thread engagement for wheel bolts**

M12 x 1.25 at least 8.0 turns

M12 x 1.50 at least 6.5 turns

M12 x 1.75 at least 6.5 turns

M14 x 1.25 at least 9.0 turns

M14 x 1.50 at least 7.5 turns

1/2" at least 8.0 turns

**ATTENTION!**

ST shafts nuts must be used in combination with DZX wheel spacers only. Additionally the type and specification must be checked (shaft nuts are not included in box content).

**ATTENTION!**

Use torque spec for the rim as described by the vehicle manufacturer or parts approval of the rim manufacturer. **Never use an impact gun!**

**Minimum thread engagement for ST shaft nuts**

M12 x 1.25 at least 12.0 turns  
M12 x 1.50 at least 10.0 turns  
M12 x 1.75 at least 10.0 turns  
M14 x 1.25 at least 13.0 turns  
M14 x 1.50 at least 11.0 turns  
1/2" at least 12.0 turns



## Further Information

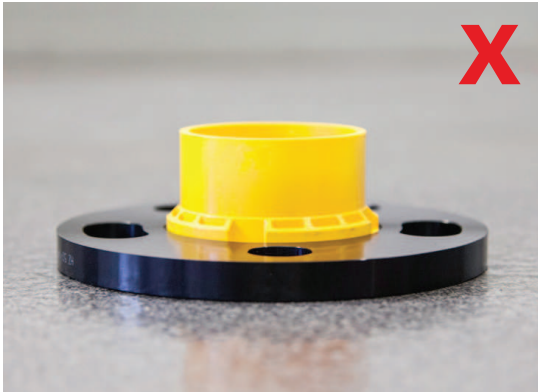


Abb. 1

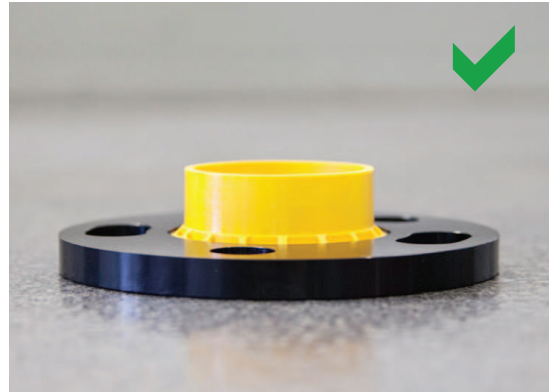


Abb. 2



Abb. 3

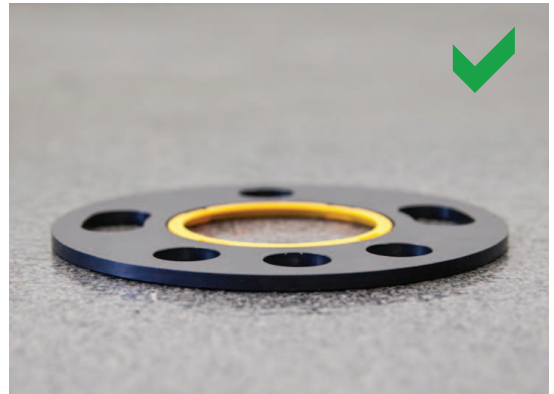


Abb. 4

## Further Information



Abb. 5

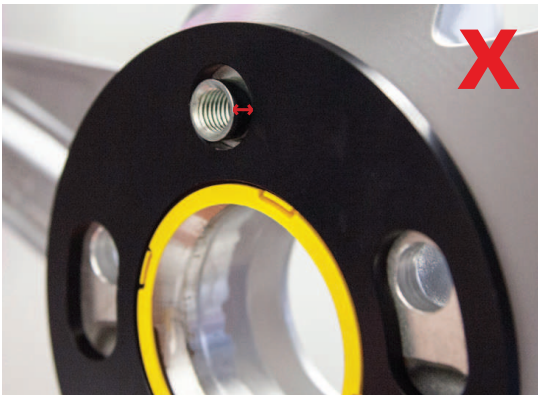


Abb. 6

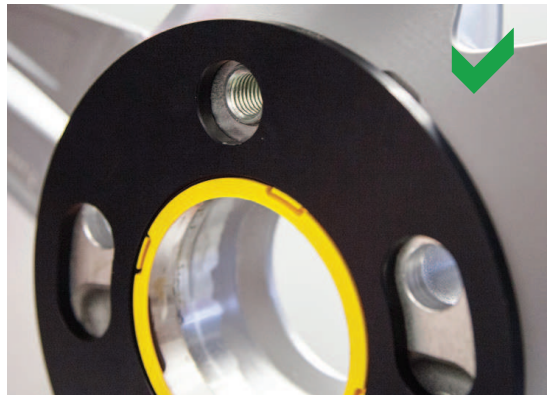


Abb. 7





Rad  
nabe



A1



A2



AZX



D1



D2



D3



DZ



DZX

Learn more about wheel spacers on our website.