

SSBC

PERFORMANCE BRAKE SYSTEMS

Corporate Overview

Braking Solutions from Collector to Commercial

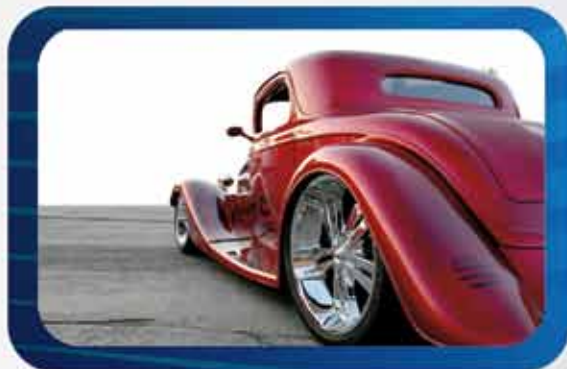


Categories Serviced



Classic Muscle Car

Products available for GM, Ford, and Mopar passenger vehicles from 1955-1979



Street Rod & Custom

Products available for all popular front suspensions including Mustang II, Corvette and Straight axles, plus GM, Ford and Mopar rear axles



Truck / SUV / Jeep

Products available for 1/2, 3/4, and 1 Ton Trucks, SUV's, Compact Trucks and Jeeps



Race Series

Products available for GM, Ford, and Mopar muscle cars



Late Model Vehicles

Products are available for domestic performance vehicles from 1980 to 2013



Accessories and Replacement Parts

Products include all of our brake accessories, such as, proportioning valves, power boosters, and master cylinders, as well as tools, and replacement parts

Braking Programs



BIG BITE
Cross Drilled Rotors™

Big Bite Cross Drilled Rotors are the toughest around, with 100's of applications! Engineered to withstand the most extreme braking conditions, Big Bite Rotors typically run 200 degrees cooler than stock. Big Bite Rotors are available as an original equipment replacement or as an upgrade to any of the kits we offer.

Big Design

- CNC precision drilled and mill slotted
- Dissipates water for better performance and safety in rain
- Precision drilled holes vent super heated gases, eliminating fade
- Precision Turbo slotting maintains a clean pad surface, maximum grip and quiet stopping power
- Rotors are vented, meaning internal vanes inside the rotor help cool it by forcing air through the rotor, which helps prevent warping

Big Quality

- Quality controlled to ensure each rotor meets and exceeds O.E. standards
- Superior metal alloy composition for maximum durability
- Reduced heat related stress eliminates warping, extending rotor and pad life
- Can last up to 35% longer than typical O.E. disc brake rotors

Precision designed pattern for holes result in a reduction of up to 200°F compared to original O.E. rotors.

Big Performance

- Cooler operating temperatures ensure maximum friction between pad and rotor for maximum stopping power and durability
- Improved braking in wet weather driving
- Quieter operation
- Limited lifetime warranty

Slots provide much needed airflow to both cool and clean the rotor.



SHORT STOP

Our Short Stop rotor program allows you to install a pair or set of turbo slotted rotors and a matched set of brake pads engineered specifically for your vehicle. O.E. dimension turbo slotted rotors are designed to remove unwanted gases from between the rotors and brake pads. This allows the brakes to run cooler and give you shorter stopping distances.



TRUCK STOP

The SSBC Truck Stop Program was created to meet the varied needs of today's truck and SUV owners. Regardless of wheel size, SSBC has a brake solution for all popular 1/2, 3/4, and 1 Ton trucks and SUV's. Products range from original equipment replacement pads and rotors to our 8-piston calipers and 15" Big Bite Rotors.



2 Piston



Tri-Power



4 Piston

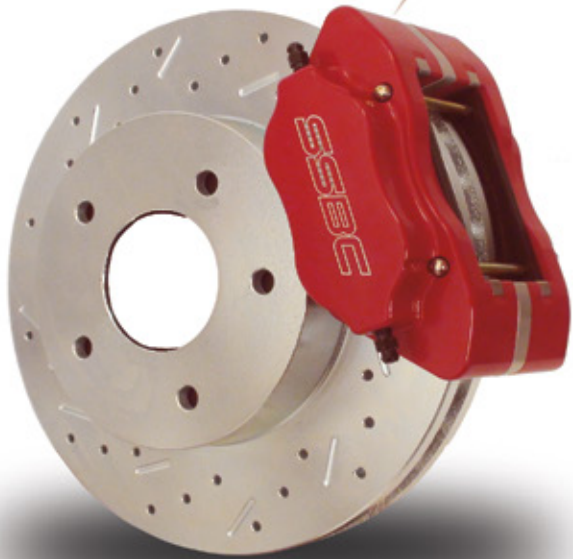


6 & 8 Piston



V8

COMPETITION SERIES CALIPER



SSBC's advanced engineering and billet 6061 T-6 aluminum construction has allowed us to create a caliper that is both exceptionally strong and light weight. The use of stainless steel pistons, stainless steel retainer plates, and nickel plated bolts create a caliper that offers the ultimate in braking performance and durability. Disc widths are available from .38in to 1in, and pistons are available from 35mm to 45mm.

- Available in Street or Race
- Direct replacement
- Direct fit to factory spindles
- Billet stainless steel pistons
- Stainless steel pad clips
- Dual pad pin design
- Kits include mounting brackets
- Available in clear anodized or optional red or black powder coat and polished



Awarded
2009 HRIA Show
"Best New Product"

Quick Change™

ALUMINUM CALIPER UPGRADE KIT



Tri-Power Caliper

Do you want to lighten your vehicle's front-end, reduce unsprung weight, and improve handling and braking?

Upgrade your heavy, tired or old O.E. disc brake system with one of Stainless Steel Brakes' Quick Change caliper upgrade kits.

Our Quick Change calipers are hi-performance, multi piston calipers that directly replace your stock O.E. calipers. Quick Change calipers are fitted with corrosion-resistant stainless steel pistons and come complete with mounting hardware. All Quick Change caliper kits include two hi-performance calipers, brake pads, and all of the hardware you need to install the calipers. Installation is as easy as replacing your calipers!

Quick Change Available with the following Calipers:

- Competition Series
- Sport Twin
- Super Twin
- Tri-Power
- Tri-Power HD
- 6 Piston
- V8

Colors Available:

- Standard Clear Anodized
- Red Powder Coat (optional)
- Black Powder Coat (optional)
- Polished (optional)



V8 Caliper

Trucks/SUV's/Jeeps

The SSBC Truck Stop Program was created to meet the varied needs of today's truck, Jeep and SUV owners. Regardless of wheel size, SSBC has a brake solution for all popular 1/2, 3/4 and 1 Ton trucks and SUV's. Products range from original equipment replacement pads and rotors to our V8 8 piston calipers and 15" Big Bite Rotors.



2 Piston

Front calipers available. Disc brake upgrade kits and Quick Change caliper kits.



Tri-Power

Front and Rear calipers available. Quick Change kits and complete upgrade kits available.



4 Piston

Front and Rear calipers and complete upgrade kits are available.



8 Piston

3/4 and 1 Ton applications. Quick Change kits and complete upgrade kits are available.



6 Piston

1/2, 3/4 and 1 Ton applications. Quick Change kits and complete upgrade kits are available.



Rear Caliper with Parking Brake

Rear disc brake conversions are available in a wide variety of rotor diameters ranging from 10.5in to 12.8in and piston sizes from 45mm to 54mm.



Classic Muscle Car

Stainless Steel Brakes Corporation (SSBC) has the most complete brake program designed for your classic muscle cars with stock and larger wheels. Whether you are looking for a basic drum to disc brake conversion or an 8 piston big brake kit, SSBC has what you need. Many of our classic muscle car brake products from SSBC are made in the USA and are manufactured to the highest of quality standards.



Standard Drum to Disc Conversions

Front calipers available. Combinations from Drum to Disc brakes.



2 Piston Kit

Front and Rear calipers, Quick Change kits and complete conversions kits are available.



R1

Rear calipers, Quick Change kits and complete conversions kits are available.



4 Piston Kit

Front and Rear calipers, Quick Change kits and complete conversions kits are available.



Tri-Power

Front and Rear calipers, Quick Change kits and complete conversions kits are available.



V8 8 Piston

Front and Rear calipers and Quick Change kits are available.



Rear Caliper with Parking Brake

Rear disc brake conversions available in a wide variety of rotor diameters ranging from 10.5in to 12.8in and piston sizes from 45mm to 54mm.

Street Rod



Stainless Steel Brakes Corporation (SSBC) has the most complete brake program designed for your Street Rod or Custom cars stock and larger wheels. Whether you're looking for a basic drum to disc brake conversion or a multi piston big brake kit, SSBC has what you need. Many of your Street Rod brake products produced at SSBC are USA made and manufactured to the highest of quality standards.

Small Wheel Fitments 14-15in wheel

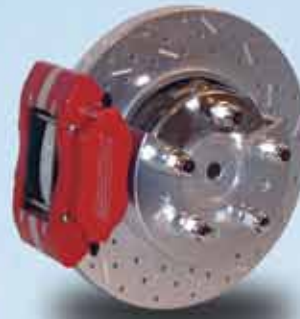
Front Applications



Sport Twin



Super Twin



Competition Series

Rear Applications



R1

Large Wheel Fitments 17in and larger

Front Applications



Tri-Power



Extreme

Rear Applications



Tri-Power



R1 Plus

Racing

At Stainless Steel Brakes Corporation (SSBC) we have taken our brake program from the street to the track with our new Competition Series brake products. Our Competition Series products are designed to rise above the rest to give you the most lightweight braking power of any similar system on the market today. Our 100% USA made Competition caliper is a direct fit to many popular 5-1/4" mounts and stock muscle car spindles.

Front Comp Series Calipers

Available in Street and Race only versions



- Direct replacement
- 20% increase in pad thickness
- 25% increase in pad area
- Stainless steel pistons
- Dual pin pad design
- Stainless steel pad clips for a quiet ride
- Utilizes off the shelf replacement pads

Rear Comp Series Calipers

Available in Street and Race only versions



- Ultra light 4-piston billet aluminum caliper
- Direct bolt on to popular GM, Ford, and Mopar rear ends
- Parking brake provision (optional)
- Improved wheel clearance for after market wheels
- Utilizes off the shelf replacement pads
- 35MM stainless steel pistons

Late Model Vehicles

Stainless Steel Brakes Corporation has a complete line of brake systems for your late model Corvette, Camaro, Firebird, Mustang, Charger, Challenger and many more! Whether your looking for a basic multi piston 13" Big Brake Kit or a massive 14" Big Brake Kit, SSBC has what you need. All of our performance aluminum calipers are designed and manufactured in our facility, located in the USA.

Popular Late Model Caliper Upgrade Kits



Comp S



Tri-Power



8-Piston

Accessories and

In Line Accessories



Gauge Kit

The SSBC Sure Stop Brake Pressure Gauge Kit indicates how much pressure you're getting at each caliper. The kit includes adapters for 6 common fittings.



Residual Valves

SSBC residual pressure valve is a great addition for any disc brake system where the master cylinder is lower than the calipers. Available in 2-lb. for disc brakes and 10-lb. for drum brakes.



Adjustable Pushrod Kit

This kit includes adapters for 10 common pushrod configurations for both power and manual systems. The Adjustable Pushrod Kit accommodates eyelet, clevis and bell crank style pushrod setups and works with both power and non-power brake systems.

Booster and Master Cylinders



Billet Master Cylinders

Billet Master Cylinders are available in plain, ball milled, flamed or finned cap styles. 1" and 1-1/8" bores and remote mount reservoir systems are also available, along with combo styles.



Power Brake Boosters

Available in 7" and 9" cad plated, 7" and 9" chrome, and 7" dual diaphragm. Applications vary. Booster/master cylinder combinations are also available.



Electric Vacuum Pump

The SSBC Vacuum Pump is a must for any vacuum power assist vehicle with less than 15" of vacuum at idle. Utilizing a 12v easy wire system, the pump produces up to 24" of vacuum.

Complete Brake Line Kits



Steel Brake Line Kits

Add all new steel lines to your vehicle with the SSBC steel brake line kits. These SSBC brake line kits includes everything you need to do the basic routing of your brake lines.



Flexible Brake Lines

Available in both rubber and braided stainless steel.



Brake Fluids

SSBC offers both silicone and hi-temp brake fluids.

Comp Caliper



Built as a replacement 5-1/4" mount caliper, our caliper offers less deflection, thicker pistons and brake pads, and bleeders that mount directly to the caliper without an adapter. Available in both street and race versions.

Super/Sport Twin Caliper



This 2 piston caliper has a forged aluminum housing with two-38mm or two-43mm stainless steel pistons. The Super/Sport Twin caliper provides more clamping force and spreads the load across the entire brake pad. This added clamping force and load distribution of the caliper give you the braking power your car needs. Direct replacement for many popular GM cars.

Tri-Power Caliper



All Tri-Power calipers are made from billet aluminum and consist of 3 stainless steel pistons ranging in sizes from 30mm to a massive 51mm. Depending on the application, these calipers are available with rotor sizes up to 14.5in diameter.

Replacement Parts



Prop Blocks

This all-in-one adjustable proportioning valve and distribution block offers you the same function as our prop valve, but gives you a total of 5 ports for integration of your front and rear brake system, plus a brake light switch!



Prop Valve

The adjustable, anodized proportioning valve regulates rear brake pressure, helping to maintain correct brake bias between front and rear brakes. The easy to turn directional handles makes it simple to either increase or decrease rear brake pressure. The valve can be mounted to any convenient location and accepts a 3/16" brake line.



Splash Shields

Splash shields to fit O.E. and after-market spindles.



Pads, Clips and Hardware

To fit GM, Ford and Mopar applications.



Spindles

Original equipment and high quality 2" drop spindles available.



Caliper Brackets

Disc brake brackets for Mustang, Mustang II, A and F bodies are available.

Standard Surface Rotor



High quality factory replacement rotor.

Slotted / Plated Rotor



Turbo Slotted™ zinc plated factory replacement rotors reduce brake fade in the most extreme braking conditions.

Big Bite Cross Drilled and Slotted Rotor



Upgrade the look and performance of your braking system with cross-drilled and slotted/plated rotors. The precision drilled holes vent super heated gases, which eliminate brake fade while maintaining a clean pad surface for maximum grip.