



SPYDER

INSTALLATION GUIDE:

PRO-YD-CS07(CCFL and LED ALL COLORS)

Tools Required

10mm Socket wrench/ratchet
Panel Popper or Flat-head Driver

Please Note

If you are unfamiliar with the installation processes, professional installation is highly recommended.



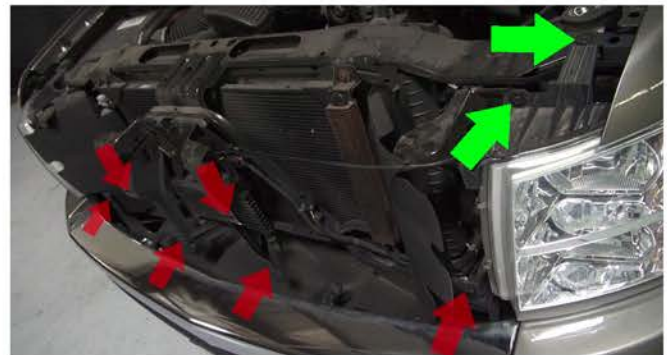
1) Open your hood and locate the (8) panel bolts. Using the panel popper tool or a flat head screw driver, gently pry the bolts free and set them aside for later. The black protective covering will now be able to be removed.



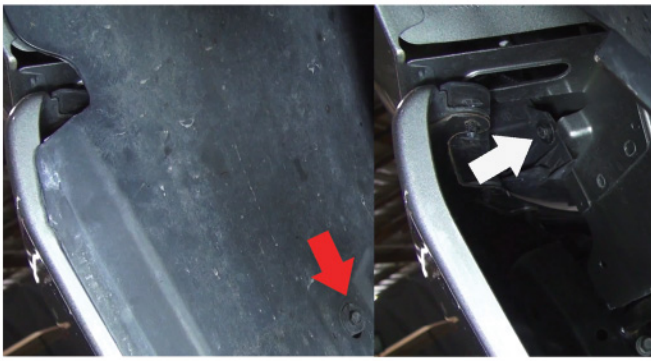
2) Once the bolts have been removed, you will need to remove (4) 10mm nuts, shown here. Once these are out, you will need to unmount the tabs holding the grille in place. They are located directly in front of the radiator support and behind the grille. (fig.3)



3) This is a top-down angle from above the grille, looking directly down into the radiator support and back of the grille. There are 3 tabs per side for a total of 6 tabs that need to be squeezed and pressed out in order to get the grille free. (see fig.4 for all 6 locations)



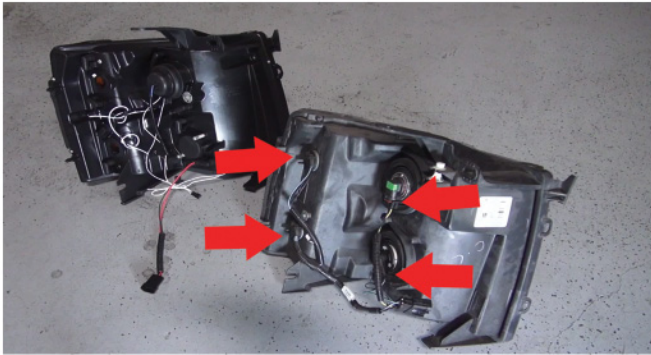
4) **For illustration the grille has been removed** You can now see each of the 6 mounting locations for the grille tabs that need to be pressed out in figure 3 (red arrows). Once these are removed, you will now need to remove the (2) 10mm bolts holding the headlight in place (green arrows).



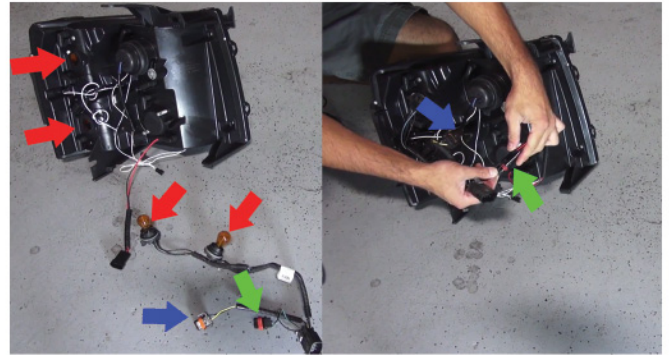
5) Before being able to full remove the headlight, you will need to locate a 10mm bolt (red arrow) in the fender well. Remove this, and peel back the liner to expose the last 10mm headlight bolt (white arrow).



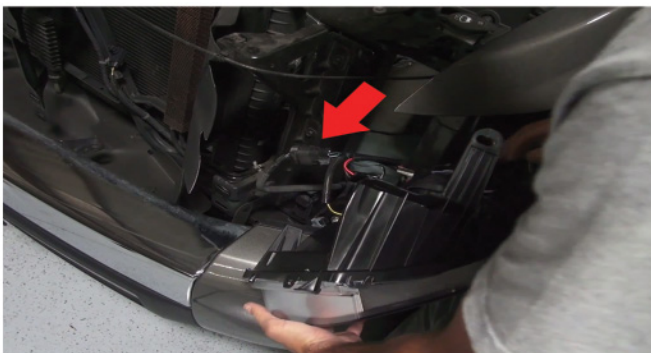
6) Now that all the bolts have been removed, you should be able to get the headlight free. However, still attached to the headlight will be the harness (circled here). Disconnect this harness and now the headlight will fully detach from the vehicle.



7) Set the OEM assembly next to the new Spyder light. You will need to transfer the bulbs and wiring harness over. The first set of red arrows (left) are your signal/running lights. Turn counter-clockwise to get them free. The second set of arrows (right) will be your bulb harnesses. These can be pulled out fairly easily.



8) Now once you have the headlight harness removed from the OEM headlight set, you will now need to plug it into the new Spyder headlight. Match the like arrows to their sockets and repeat for all bulbs and sockets. Red arrows indicate the running/turn signal bulbs, the blue arrows (orange oem harness to white/blue harness) are your low beam wires, and the green arrows (red oem harness to red/black harness) indicate your high beam harness.



9) Once the wires have all been connected, reattach your OEM harnesses together and mate the connection. Reinstall all panels, bolts, and fasteners in reverse order as shown in steps (6,5,4,3,2,1).



10) Close the hood, and you're done! Congratulations on installing your new Spyder Halo Headlights for your 2007+ Chevy Silverado.