



SPYDER

INSTALLATION GUIDE: PRO-YD-CDE00-(ALL COLORS)

Tools Required

None

Please Note

If you are unfamiliar with the installation processes, professional installation is highly recommended.



1) Open the hood. Locate the two L-shaped retainer bars that secure the headlight.



2) Rotate the two L-shaped retainer bars out of the way, then you can remove them and set them aside for now.



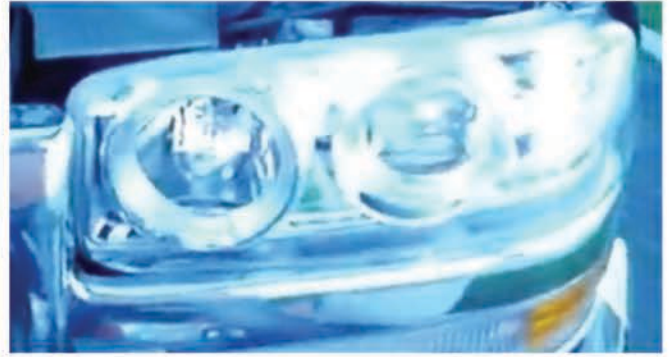
3) Unseat the headlight and disconnect the headlight wiring harnesses. Then remove the high and low beam bulbs from the OEM headlight assembly, as we must transfer these to the SPYDER headlight.



4) After transferring the headlight bulbs from the OEM headlight to the SPYDER projector headlight, reconnect the headlight wiring harnesses.



5) Reinstall the two L-shaped retainer bars. Insert the bar, then twist it to lock it into place.



6) Enjoy your new SPYDER projector Halo headlights.

We offer direct replacement factory headlights, as well as a huge selection of custom headlights in your choice of styles and lighting options.