



# SPYDER

## INSTALLATION GUIDE: PRO-YD-CCO04-(ALL COLORS)

### Tools Required

10mm Socket + Ratchet



**\*Please Note\***

If you are unfamiliar with the installation processes,  
professional installation is highly recommended.



1) Open the hood.



2) Push down on the four retainer clips securing the  
upper grille to the truck.



3) Disconnect the turn signal harness.



4) Now you can unseat and remove the upper  
grille/turn signal assembly.

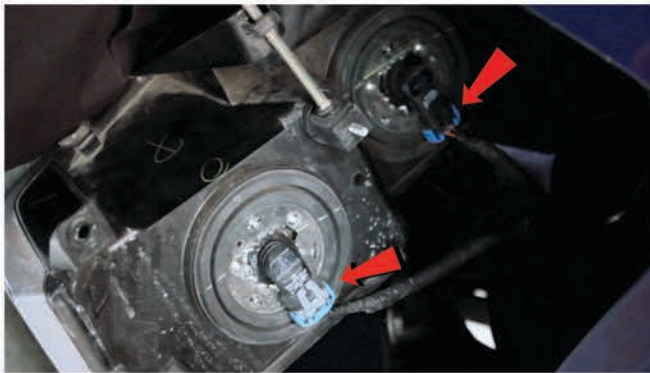
Spyder Auto's custom lights can make your vehicle look better and increase your safety.



5) Remove [2x] 10mm bolts securing the headlight.



6) Unseat the headlight.



7) Disconnect the high beam and low beam harnesses, then remove the headlight and set it aside.



8) Locate your Spyder headlight.



9) Connect the high beam and low beam harnesses to your Spyder headlight.



10) Seat the Spyder headlight.





11) Reinstall the [2x] 10mm bolts to mount the headlight.



12) Reinstall the upper grille/turn signal assembly, being sure to lock all four retainer clips into place.



13) Reconnect the turn signal harness.



14) Close the hood and enjoy your new Spyder headlights.