



SPYDER

WWW.SPYDERAUTO.COM

INSTALLATION GUIDE: PRO-YD-NT104-CCFL-(All)

Tools Needed:

- ¼" ratchet
- 10mm socket
- Flathead Screwdriver



1. Unlock and remove (8x) plastic retaining clips using a flathead screwdriver.



2. Release grill corner clips.



3. Unseat and remove the grill.



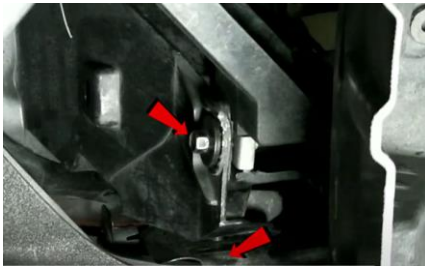
4. Remove headlight garnish panel.



5. Remove (2x) 10mm bolts securing the headlight.



6. Disconnect headlight harness.



7. Remove (2x) 10mm bolts securing the headlight from below.



8. Unseat the headlight.



9. Remove (2x) garnish clips below the headlight and install on Spyder headlight.



10. Remove high and low beam bulb along with harness, side marker and turn signal sockets from oem headlight.



11. For info on how to wire halos please refer to the Spyder FAQ playlist on the Spyder Auto YouTube channel.



12. Install high and low beam bulb along with harness, side marker and turn signal sockets onto Spyder headlight.



13. Seat Spyder headlight and reconnect headlight harness.



14. Reinstall (2x) 10mm bolts below the headlight.



15. Reinstall (2x) 10mm bolts securing the headlight.



16. Reinstall headlight garnish panel.



17. Seat Spyder headlight.



18. Reinstall grill and (8x) retaining clips.



19. Turn on lights and confirm all functions are working properly. You have successfully completed the install of your new Spyder Headlights.



SPYDER

WWW.SPYDERAUTO.COM

For further help with installation, please watch our installation video.

Follow the direct link below to our YouTube channel for more
information:

<http://www.youtube.com/watch>

DISCLAIMER

Spyder Auto Installation Guide is not liable for damages, injuries, and death while installing the product. This is intended to be an installation guide, to reduce installation time. We have no responsibility for improper installation. If you do not know how to install, please have a professional install it.