



# SPYDER

WWW.SPYDERAUTO.COM

## INSTALLATION GUIDE:

PRO-YD-BMWE4602-4D-AM-CCFL-(All)

### Tools Needed:

- ¼" ratchet
- 8mm socket
- Panel popper



1. Gently slide bumper molding outwards.



2. Remove center molding.



3. Remove side moldings by releasing tabs.



4. Remove (6x) plastic retainers using panel popper.



5. Remove (2x) 8mm bolts under the front fascia on each corner.



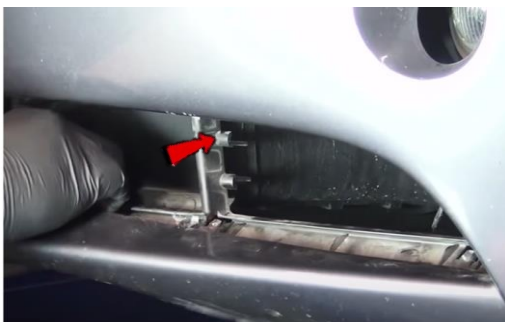
6. Under center of the front fascia remove (3x) plastic retainers.



7. Under headlight remove garnish by pushing in tab and gently pull out.



8. Remove both outer lower grills.



9. Unseat fascia from ductwork.



10. Remove front bumper fascia.



11. Remove (2x) 8mm hidden lower headlight bolts.



12. Remove (2x) upper 8mm bolts.



13. Remove (1x) phillips screw securing corner lamp.



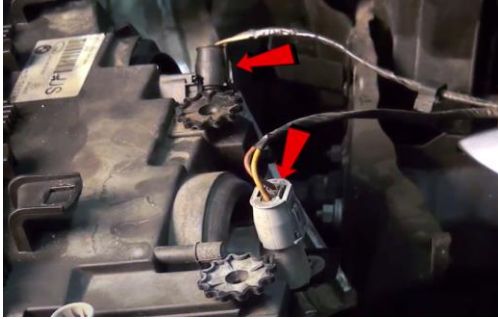
14. Unseat corner lamp.



15. Disconnect corner lamp harness.



16. Unseat headlight.



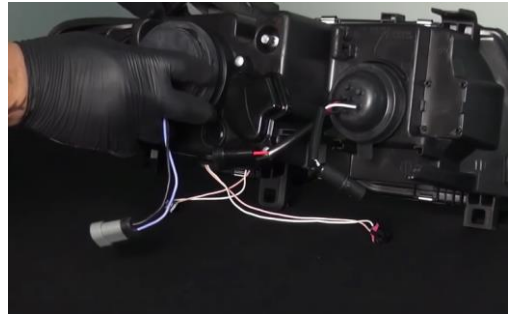
17. Disconnect high and low beam harness.



18. Remove low beam bulb from OEM headlight (Never touch bulbs with bare hands).



19. Install low beam bulb into Spyder headlight.



20. Make sure to reinstall low beam seal securely.



21. For info on how to wire halos please refer to the Spyder FAQ playlist on the Spyder Auto YouTube channel.



22. Reconnect the (3x) headlight harnesses.



23. Black and White wire plug is only used in euro market applications.



24. Seat Spyder headlight.



25. Reinstall upper and lower 8mm bolts.



26. Reinstall headlight garnish.



27. Seat front bumper fascia.



28. Reinstall both outer lower grills.



29.Reinstall (6x) plastic retainers.



30.Reinstall center molding.



31.Reinstall both corner moldings.



32.Reinstall (2x) corner 8mm bolts on each side.



33.Reinstall (3x) plastic retainers.



34.Turn on lights and confirm all functions are working properly. You have successfully completed the install of your new Spyder Headlights.



# SPYDER

WWW.SPYDERAUTO.COM

For further help with installation, please watch our installation video.

Follow the direct link below to our YouTube channel for more  
information:

<http://www.youtube.com/watch>

## **DISCLAIMER**

Spyder Auto Installation Guide is not liable for damages, injuries, and death while installing the product. This is intended to be an installation guide, to reduce installation time. We have no responsibility for improper installation. If you do not know how to install, please have a professional install it.