

2013-16 FR-S LED Taillight Installation



Fits: 2013-2016 Scion FRS, 2013-2016 Subaru BRZ

Tools required

8 mm deep socket



3/8" Ratchet



Flat tipped screwdriver



1. Before



2. Open trunk



3. Remove trunk floor



4. 3 plastic clips location



5. Remove 3 plastic clips



6. Remove 3 plastic clips



7. Remove 3 plastic clips



8. Remove plastic moulding



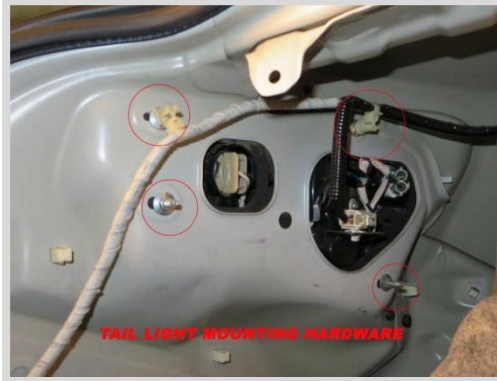
9. Remove plastic clip holding upper edge of trunk liner



10. Peel back trunk liner to access taillight mounting hardware



11. Taillight mounting hardware location



12. Disconnect taillight harness



13. Remove 4 8mm nuts



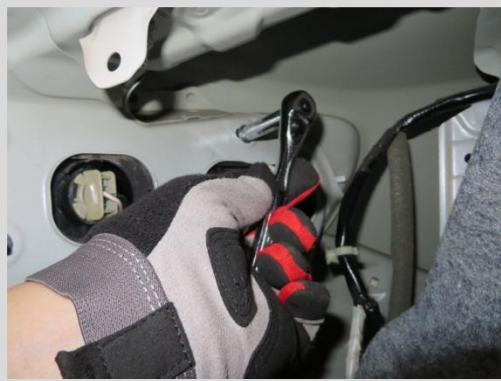
14. Remove 4 8mm nuts



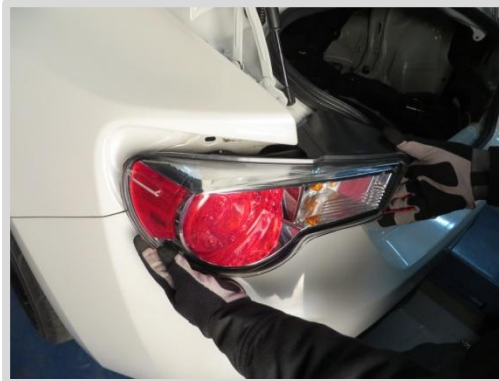
15. Remove 4 8mm nuts



16. Remove 4 8mm nuts



17. Remove factory taillight



18. Seat Spyder taillight into position



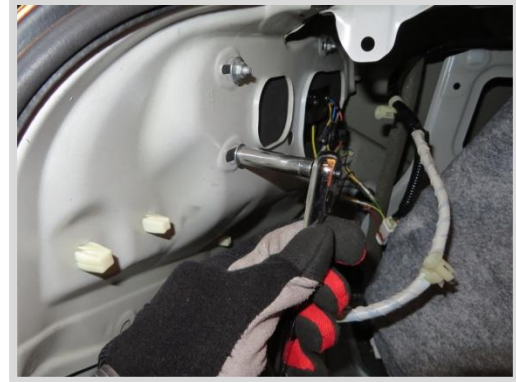
19. Connect taillight harness



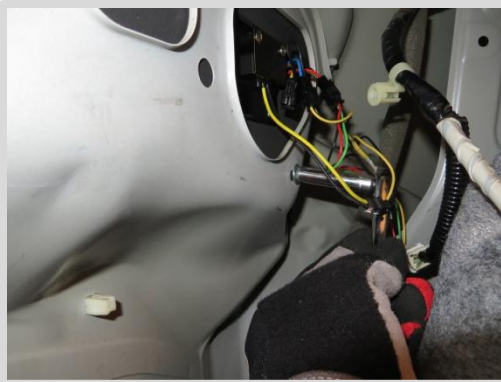
20. Tighten 4 8mm nuts



21. Tighten 4 8mm nuts



22. Tighten 4 8mm nuts



23. Tighten 4 8mm nuts



24. Reinstall trunk liner



25. Replace plastic moulding



26. Replace 3 plastic clips



27. Replace 3 plastic clips



28. Replace 3 plastic clips



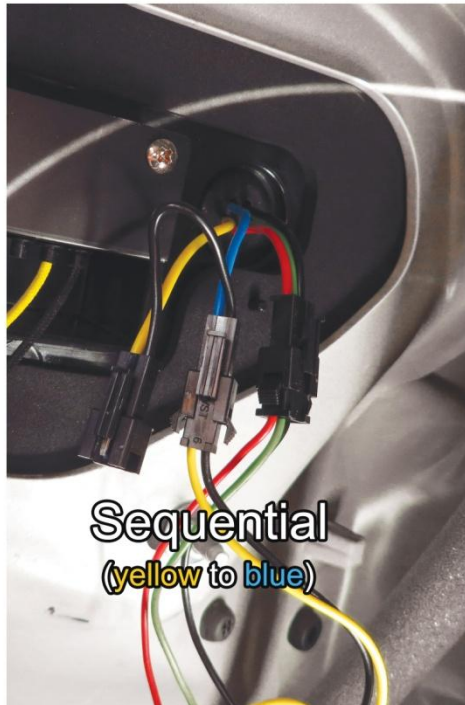
29. Replace trunk floor



30. Complete



LED turn signals can be configured to illuminate sequentially or simultaneously (standard).



*Option only available after 2016