



SPYDER

INSTALLATION GUIDE: ALT-YD-PGP97-LED-(ALL COLORS)

No Tools Required

Please Note

If you are unfamiliar with the installation processes, professional installation is highly recommended.



1) Open the trunk.



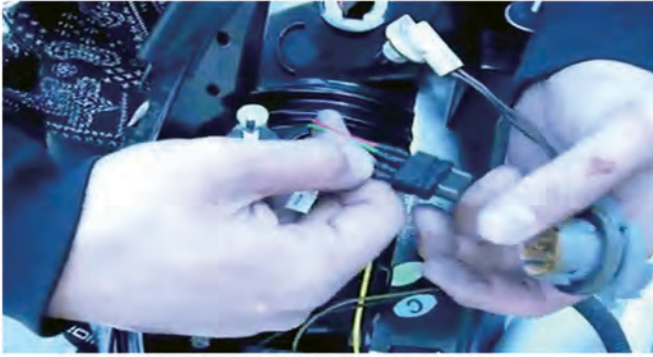
2) Locate two Black Thumbscrews behind the tail lights, securing the carpet on the inside of the trunk. Remove these thumbscrews.



3) Peel back the trunk liner. Remove this thumbscrew behind the tail light on the inside of the trunk.



4) After removing the three thumbscrews you should be able to unseat the tail light. Remove the three bulb sockets from the tail light housing and then set the OEM tail light aside.



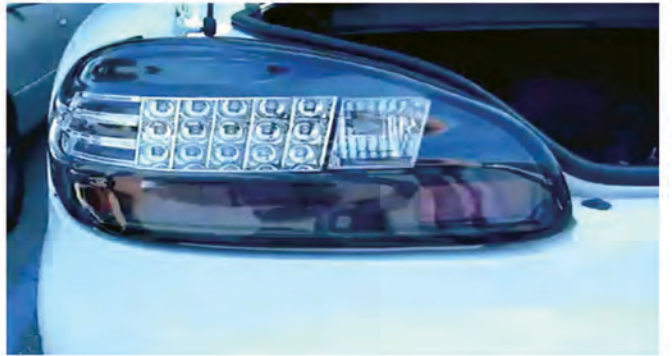
5) Locate the SPYDER tail light. Install the reverse lamp and turn signal sockets. Remove the bulb from the brake lamp socket. Connect the SPYDER wedge harness socket insert to the brake lamp socket, black wire on the black wire side of the socket.



6) After reinstalling the bulb sockets and connecting the harness, seat the SPYDER tail light.



7) Replace the thumbscrew under the trunk liner, then replace the trunk liner, and reinstall the remaining two thumbscrews that also secure the tail light.



8) Close the trunk and enjoy your new SPYDER tail lights.