



SPYDER

WWW.SPYDERAUTO.COM

INSTALLATION GUIDE: ALT-YD-HC06-2D-LED-(All)

Tools Needed:

- ¼" ratchet
- T30 Torx
- 10mm socket
- Panel popper
- Phillips screw driver



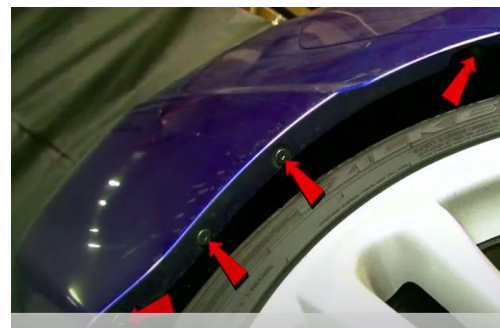
1. Remove (2x) plastic retainers.



2. Open trunk and remove (2x) T30 torx screws.



3. Remove center trunk panel.



4. Remove (4x) phillips screws that secure the bumper.



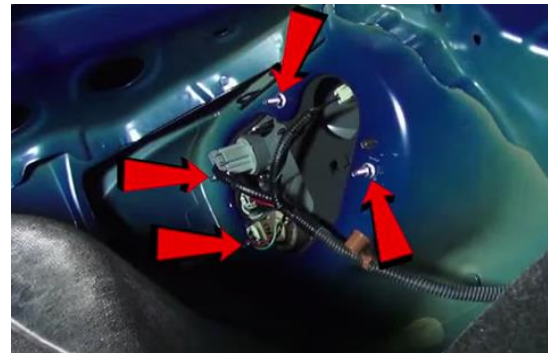
5. Unseat and remove bumper fascia.



6. Remove (2x) 10mm nuts.



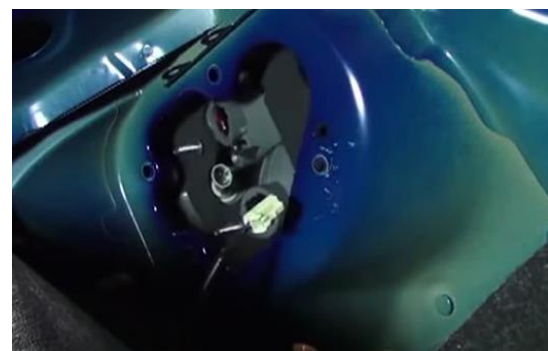
7. Remove (3x) plastic retainers securing the trunk liner.



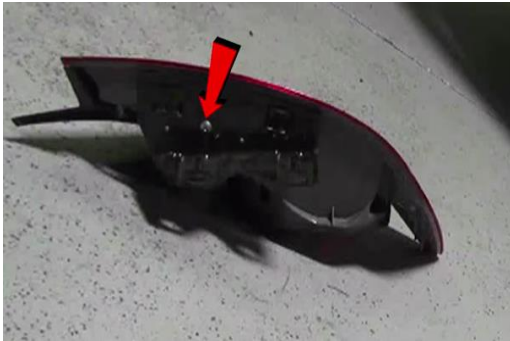
8. Remove (4x) 10mm nuts securing the tail light.



9. Disconnect tail light harnesses and remove turn signal and brake light socket.



10. Unseat tail light.



11. Remove (1x) Phillips screw securing tail light bracket. Transfer bracket to Spyder tail light.



12. Seat Spyder tail light.



13. Reinstall (4x) 10mm nuts securing tail light.



14. Remove brake light bulb from socket.



15. Install Spyder brake socket insert into brake socket. (Making sure to align black wire of socket insert to black wire of socket)



16. Install turn signal and brake sockets into Spyder tail light. Install (2x) harness plugs into Spyder tail light.



17.Reinstall trunk liner and (3x) plastic retainers.



18.Install (2x) 10mm nuts.



19.Seat bumper fascia.



20.Reinstall (4x) phillips screws.



21.Reinstall (2x) T30 Torx



22.Reinstall (2x) plastic retainers.



23. Turn on lights and confirm all functions are working properly. You have successfully completed the install of your new Spyder LED tail lights.



SPYDER

WWW.SPYDERAUTO.COM

For further help with installation, please watch our installation video.

Follow the direct link below to our YouTube channel for more information:

<http://www.youtube.com/watch>

DISCLAIMER

Spyder Auto Installation Guide is not liable for damages, injuries, and death while installing the product. This is intended to be an installation guide, to reduce installation time. We have no responsibility for improper installation. If you do not know how to install, please have a professional install it.