

# 2014-16 Chevy SS LED Taillight Installation



Fits: 2014-2016 Chevy SS

# Tools required

**7mm socket**



**8mm socket**



**10mm socket**



**T15 socket**



**1/4" ratchet**



**flat tipped screwdriver**



1. Before



2. Open trunk



3. 4 wing screws location



4. Remove 4 wing screws



5. Remove 4 wing screws



6. Remove 4 wing screws



7. Remove 4 wing screws



8. Remove trunk floor



9. Remove rear trunk moulding



10. T15 screws location



11. Remove 5 T15 screws

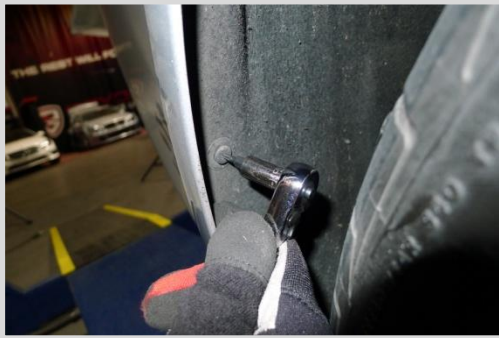


12. Remove 5 T15 screws

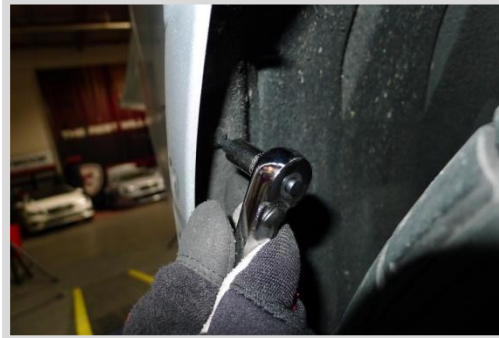




13. Remove 5 T15 screws



14. Remove 5 T15 screws



15. Remove 5 T15 screws



16. 3 plastic clips location



17. Remove 3 plastic clips



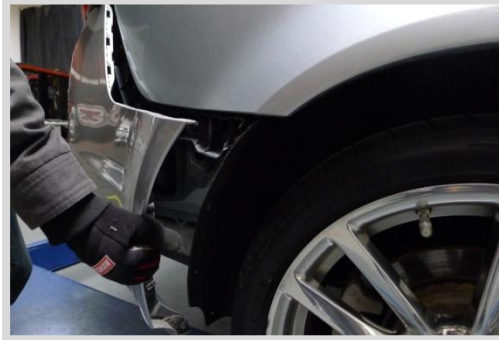
18. Remove 3 plastic clips



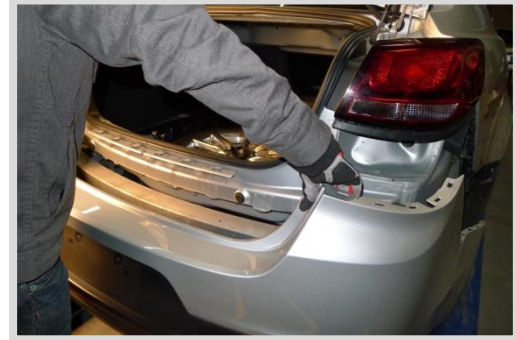
19. Remove 3 plastic clips



20. Unclip sides of bumper



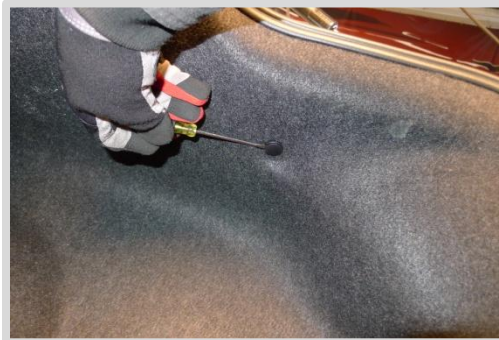
21. Remove rear bumper



22. Disconnect backup sensor harness



23. Remove plastic clip securing trunk liner



24. Pull trunk liner aside



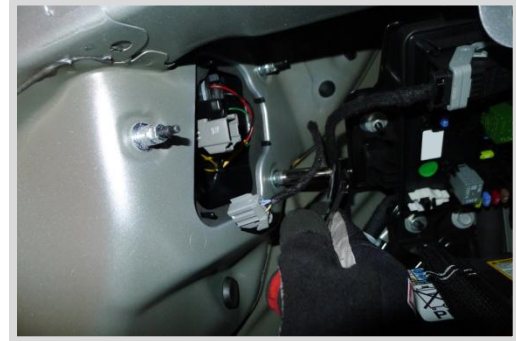
25. Disconnect taillight harness



26. Remove 3 10mm nuts



27. Remove 3 10mm nuts



28. Remove 3 10mm nuts



29. Remove factory taillight



30. Place new taillight into position





31. Connect taillight harness



32. Tighten 3 10mm nuts



33. Tighten 3 10mm nuts



34. Tighten 3 10mm nuts



35. Remove 2 7mm bolts



36. Remove 2 7mm bolts then the plastic handle





37. Remove 4 plastic clips



38. Remove 4 plastic clips



39. Remove 4 plastic clips



40. Remove 4 plastic clips



41. Pull trunk liner down



42. Disconnect taillight harness



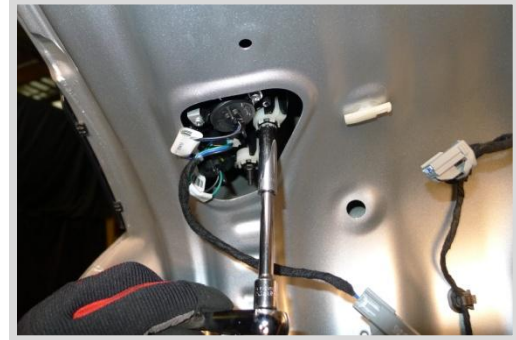
43. Unclip and remove taillight connector



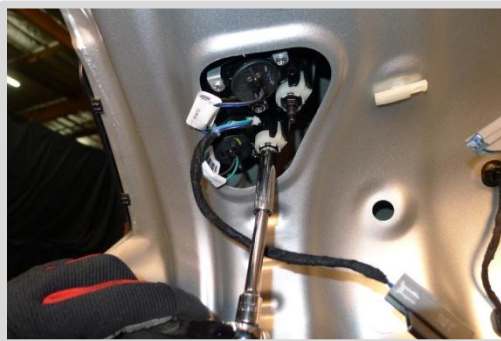
44. Unclip and remove taillight connector



45. Loosen 2 8mm nuts



46. Loosen 2 8mm nuts



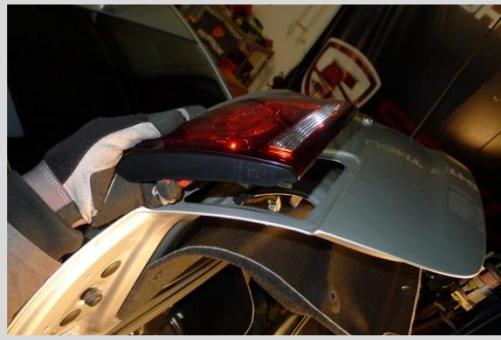
47. Remove taillight hardware



48. Remove taillight hardware



49. Remove factory taillight



50. Position LED taillight onto trunk lid



51. Connect taillight harness



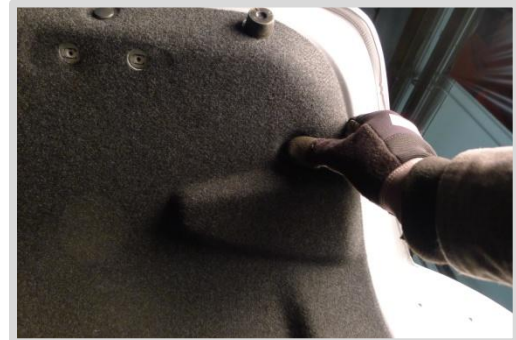
52. Tighten 2 10mm nuts



53. Tighten 2 10mm nuts



54. Replace trunk liner and 4 plastic clips





55. Replace 4 plastic clips



56. Replace 4 plastic clips



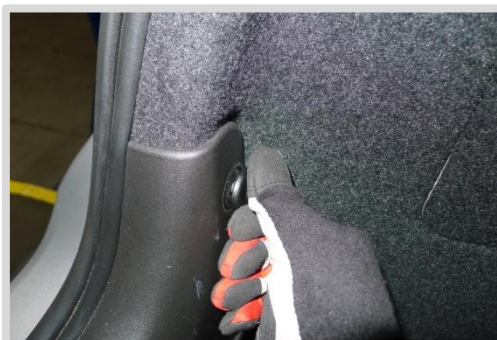
57. Replace handle and secure with 2 7mm bolts



58. Replace trunk liner and secure with plastic clip



59. Replace trunk moulding and secure with 4 wing screws



60. Replace Trunk floor





61. Reconnect harness



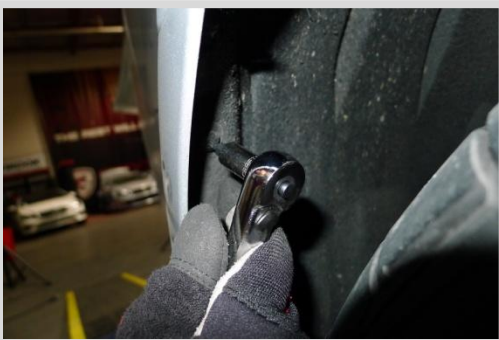
62. Replace rear bumper



63. Tighten 5 T15 screws



64. Tighten 5 T15 screws



67. Tighten 5 T15 screws



68. Replace 3 plastic clips



69. Replace 3 plastic clips



70. Complete

