



SPYDER

WWW.SPYDERAUTO.COM

INSTALLATION GUIDE: ALT-YD-BE9006-LED-(All)

Tools Needed:

- ¼" ratchet
- Panel popper
- 8mm socket



1. Remove thumb screw and access panel.



2. Remove (3x) 8mm bolts securing tail light.



3. Unseat outer tail light and disconnect wiring harness.



4. Unclip bulb socket plate.



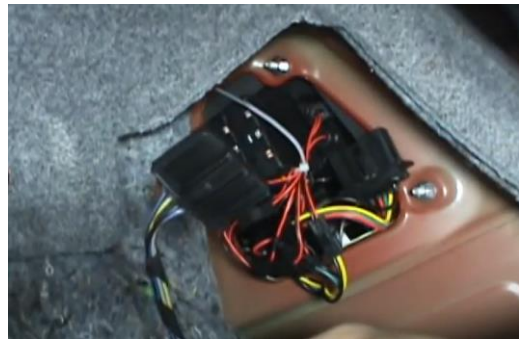
5. Remove (2x) bulbs from socket plate and transfer into the Spyder tail light designated sockets. (Make sure to never touch bulb with bare hands)



6. Seat outer Spyder tail light.



7. Reinstall (3x) 8mm bolts to secure outer tail light to body.



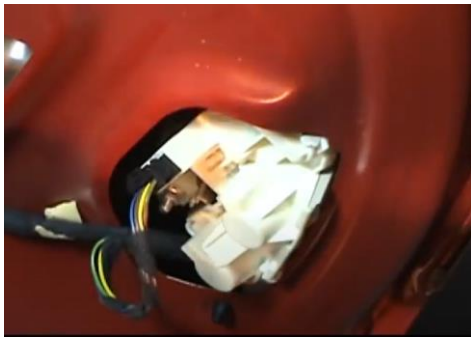
8. Reconnect tail light harness.



9. Reinstall access panel and thumb screw.



10. Remove (8x) retaining clips with panel popper to remove trunk lid liner.



11. Remove (1x) 8mm nuts and disconnect harness from tail light inner.



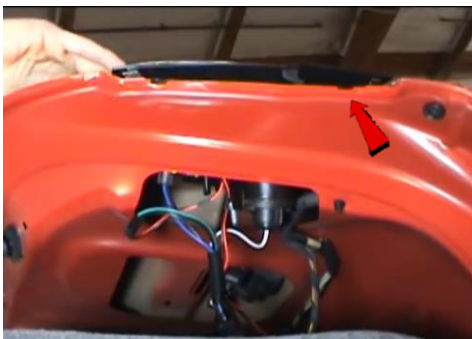
12. Unseat inner tail light.



13. Unclip socket plate and remove (1x) small bulb and (1x) large bulb.



14. Transfer bulbs to Spyder inner tail light.



15. Seat Spyder inner tail light making sure to seat tab guides on tail light.



16. Reinstall (1x) 8mm nut and plug in harness.



17. Mount resistor using providing 3M tape.



18. Reinstall (8x) retaining clips to secure trunk lid liner.



19. Turn on lights and confirm all functions are working properly. You have successfully completed the install of your new Spyder LED tail lights.



SPYDER

WWW.SPYDERAUTO.COM

For further help with installation, please watch our installation video.
Follow the direct link below to our YouTube channel for more
information:

<http://www.youtube.com/watch>

DISCLAIMER

Spyder Auto Installation Guide is not liable for damages, injuries, and death while installing the product. This is intended to be an installation guide, to reduce installation time. We have no responsibility for improper installation. If you do not know how to install, please have a professional install it.