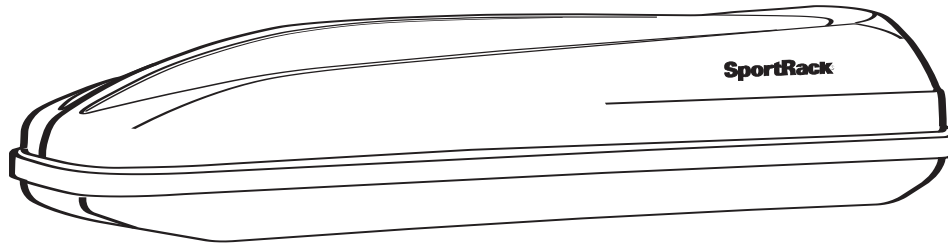
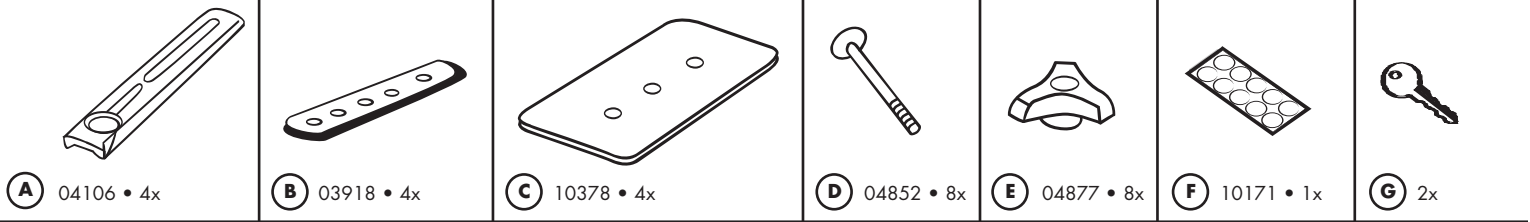


CARGO BOX CARRIER INSTRUCTION SHEET

ASSEMBLY COMPONENTS

PARTS LIST

Part	Description	Part Number	Qty.
-	Quick Release Kit	04952	1
A	Saddle Quick Release	04106	4
B	Interior Plate - 5 Hole	03918	4
C	Reinforcing Plate	10378	4
D	Carriage Bolt	04852	8
E	Threaded Knobs	04877	8
F	Mask, Vinyl Hole Covers	10171	1
G	Key	-	2

MAINTENANCE

- The roof box should be carefully cleaned and maintained, particularly in the winter months.
- For cleaning, use only water with a mild detergent which contains no additives (such as alcohol, chlorine or ammonia) as these could damage the surface of the roof box.
- The locks should be lubricated with graphite or similar dry lubricant.
- Box should be protected from exposure to the elements during prolonged periods of storage.
- Box and fittings should be inspected periodically for damage.



CAUTION READ THIS BEFORE ASSEMBLY OR WARRANTY WILL BE VOID

- For safety, all locking and latching devices must be engaged (and keys removed) before putting the vehicle in motion. When locking the carrier with the key locks, check to make sure the locks are engaged by attempting to lift the top. If one or both ends lift, unlock the locks, reposition the top and relock. Check for engagement again and if properly locked, remove both keys.
- Do not travel with an empty hardshell at speeds over 40 MPH (65 kph). Keep a minimum of 50 lbs. in the Carrier to help keep it down on the roof.
- High speed travel with an empty or lightly loaded carrier should be avoided. In such cases, make certain that the carrier is properly and securely attached and travel at reduced speeds to prevent undesirable wind effects. If possible, relocate items from the vehicle (i.e. spare tire, jack, etc.) into the carrier as a temporary load.

IMPORTANT - MUST READ INSTRUCTION SHEET BEFORE ASSEMBLING

Before assembling and attaching the Car-Top Carrier (the "Carrier") please carefully read the instructions for the installation and use of the Carrier printed below. Assembly and installation of the Carrier is solely your responsibility. Consequently, the manufacturer's warranty is exclusively limited to the repair or replacement of a defective Carrier. Damage to your vehicle, its contents, or to any person or property is excluded from the warranty.

- Because of the size and structural difference between vehicles, we rely upon your discretion in attaching the Carrier to your roof and/or rack systems.
- Consult your owner's manual for recommended roof load capacity, however in no case should more than 100 pounds, evenly distributed, be transported in the Carrier.
- All hardware should be firmly attached, tightened and locked before every trip. When traveling, periodically inspect hardware to determine that they are fastened securely. If fastening hardware show any signs of wear, corrosion, or fatigue, replace before use of carrier.
- Remove your Carrier when it is not in use.
- The Carrier is water resistant, not waterproof. Protect your contents accordingly.

NOTE: Do not place valuable or fragile items in the Carrier. Sudden stops may cause contents to shift, possibly damaging valuable and/or fragile items. The manufacturer or retailer cannot be held responsible for damage to or loss of personal belongings.

1

With the help of another person place box on roof rack.



2

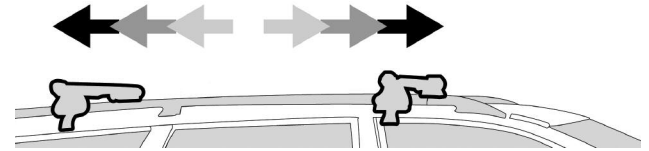
Slide forward or backward to position mounting slots properly over crossbars.
Note: Mount box towards the rear of the vehicle to minimize wind resistance.



3

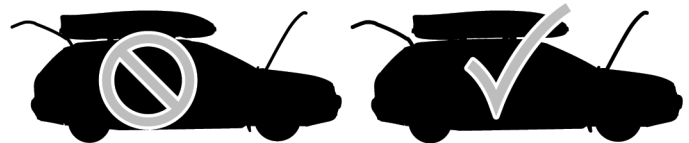
If crossbars are adjustable, set to widest position which can be accommodated by mounting slots.

Minimum bar spread = 23 5/8" or 600mm.



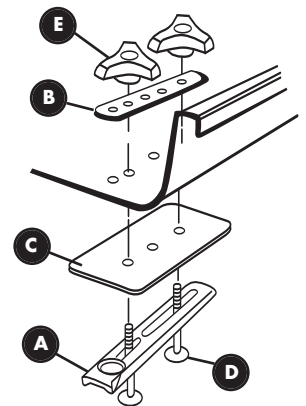
4

Check rear hatch and front hood clearance.



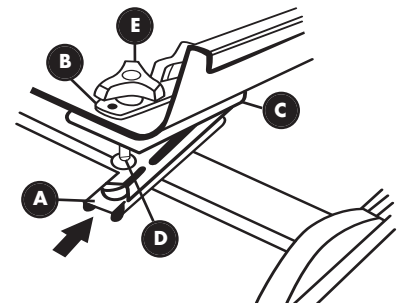
5

Remove carrier from vehicle's roof rack crossrails. Assemble the saddle assembly on carrier bottom, using the desired pre-drilled holes. Turn the threaded knobs clockwise just enough to engage the threaded ends of the carriage bolts. Leave the assembly loose.



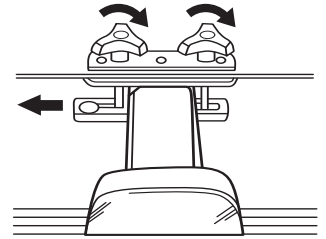
6

When you are ready to mount the carrier to the vehicle's roof rack crossrails, slide each saddle until it separates from the carriage bolt and drops down.



7

Position saddles under the crossrails and push the saddle back over the carriage bolt and slide it forward until it stops. Turn knobs clockwise and tighten equally and securely.



8

To remove carrier from roof rack, loosen knobs, slide saddles until they separate from carriage bolts. Slide it forward and lift off of vehicle. Leave all the parts attached to your carrier to simplify your next installation.

9

Place Vinyl Mask Hole covers (F) over remaining holes in carrier bottom to prevent water or dirt entering the carrier.

10

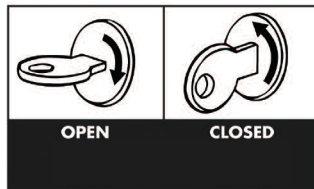
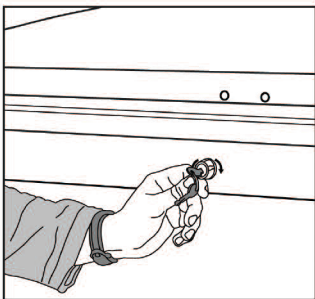
UNLOCKING/LOCKING THE BOX

Unlocking: Insert the key and turn clockwise to the unlocked position.

The key can only be removed when the box lid is closed and locked.

Locking: To close, press down on the lid at the front and rear of the box.

Turn the key counter-clockwise to lock. Remove key.



CAUTION

Check that latches are engaging brackets.

Top should not lift up when pulled.

All locking devices must be engaged (and keys removed) whenever the vehicle is in motion.