

#### PARTS INCLUDED



3/8" 10mm



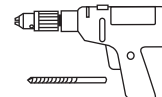
#### PARTS NOT INCLUDED



3/8" 10mm

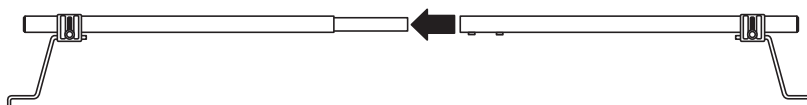


Silicone  
Adhesive Sealant

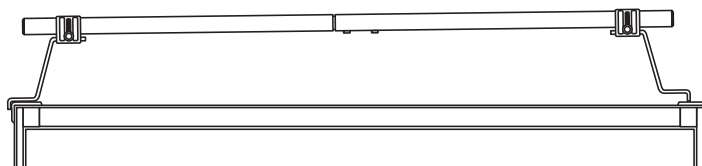


1/8" 4mm

1

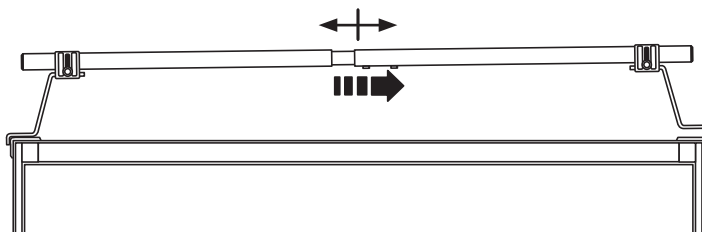


2

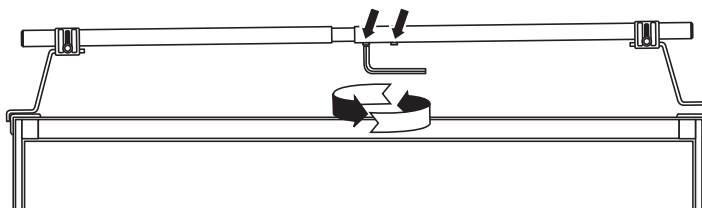


3

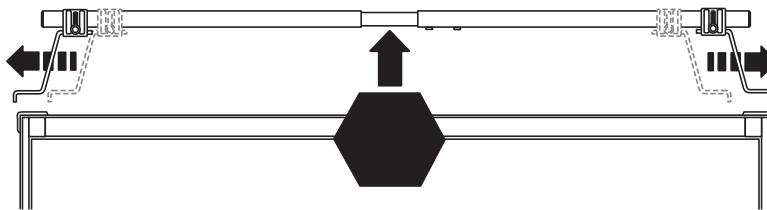
3 1/2" maximum 88mm



4

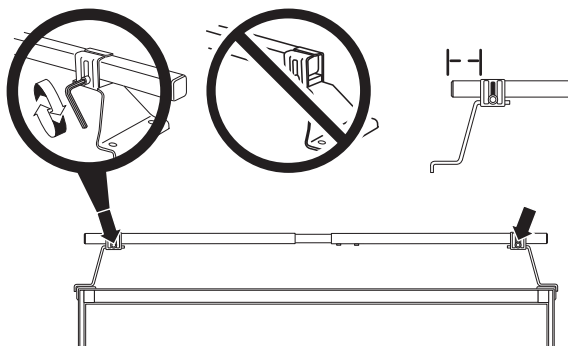


5



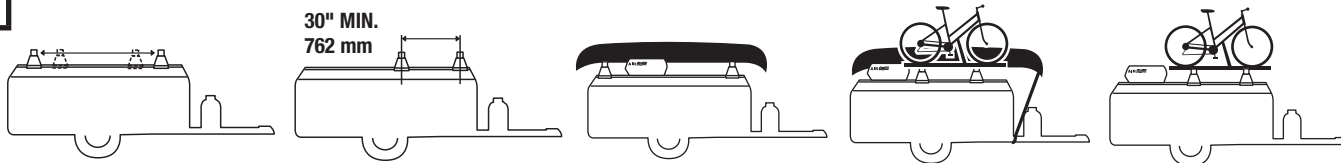
3 1/2" maximum 88mm

6



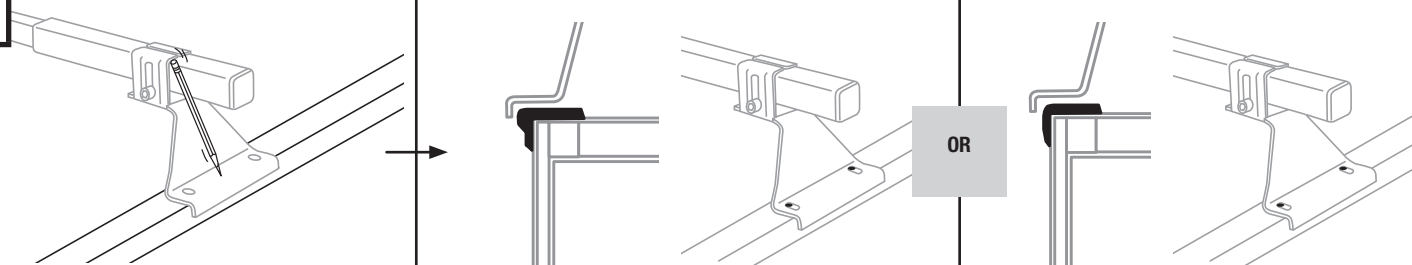
1/2" maximum 12mm

7



30" MIN.  
762 mm

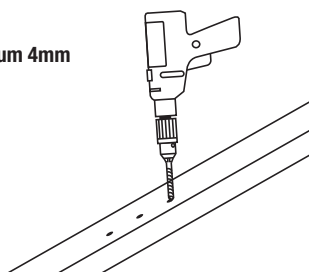
8



OR

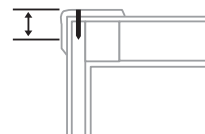
9

1/8" maximum 4mm

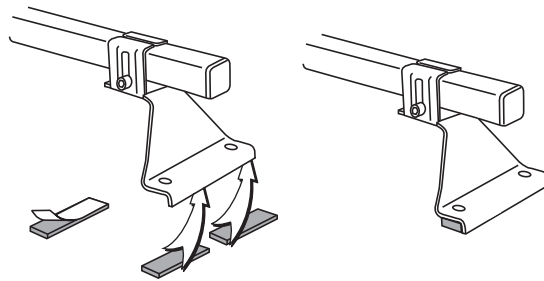


1/2" maximum 12mm

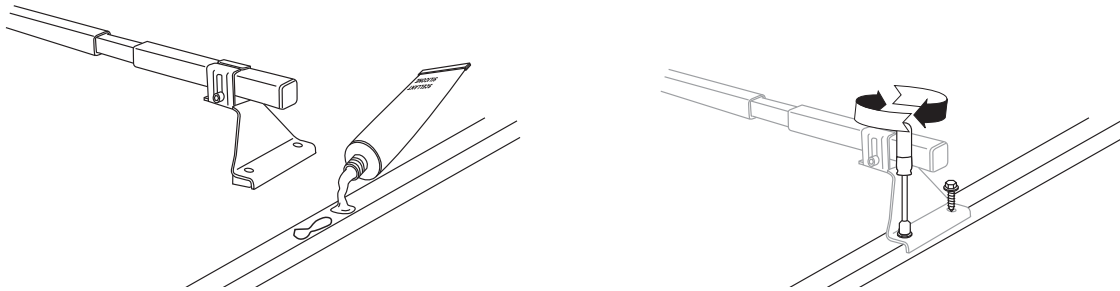
1/2" MAX.  
12mm



10



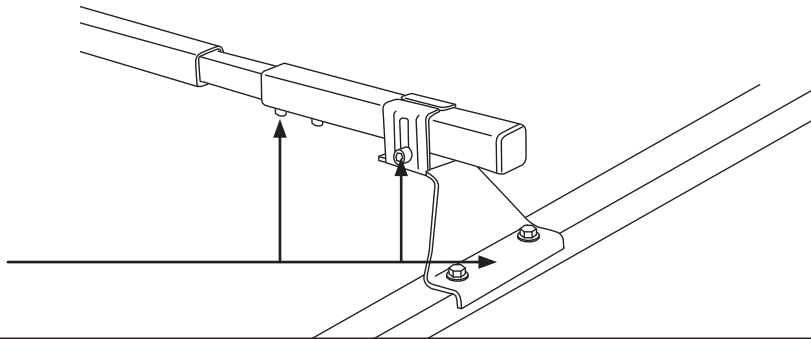
11



12



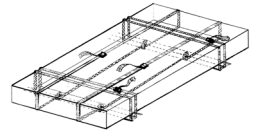
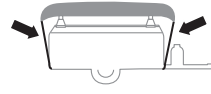
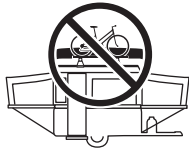
Tighten Well



13



# 14



90kg (200lb) Maximum load evenly distributed over both crossbars. Do not exceed the recommended maximum roof top cargo weight of your camper.

Make sure all bolts and screws are secured on the roof rack system before loading cargo.

For long objects such as canoes, in addition, tie the bow and stern to the frame of the trailer.

When outfitting a camper top for cargo carrying, the trailer's GVWR and tire load range must be considered in addition to the weight of an air conditioner, if applicable, and other vehicle cargo such as take along water and general camping provisions. The camper's GVWR and tire load range rating are not to be exceeded. All roof top cargo with the exception of an air conditioner, must be removed prior to raising the camper top or the top assembly and lift system warranty may be voided.

A minimum of 10% to 15% of the total trailer weight must be maintained on the hitch.

Ensure the roof rack will not interfere with the the future installation of an air conditioner and roof brace in the event that you may choose to install this equipment at a later date. This system is not intended for seamless ABS one-piece top assemblies.

Check frequently that your cargo is securely stowed.

Ensure that loads are installed according to the StVZO: No item of baggage should extend beyond the rack area. Weight should be distributed evenly over the rack area, with the centre of gravity as low as possible. Cargo should be attached correctly with the appropriate bolts or similar reinforcement system.

**DO NOT USE ELASTIC STRAPS.**

# 15

## KIT TRAILER TENT

