

Spohn Performance, Inc.

Part# D94-99-DFSK2 – Dual Front Shock Mounting Kit

1994-1999 Dodge Ram 4x4 1500, 2500 & 3500 | Lifted Ride Height

USE OF THIS PRODUCT IS ACCEPTANCE OF SELLER'S DISCLAIMER OF WARRANTY!

By their very nature, competition components are constantly pushed to their limits. While our components are designed to withstand intense race conditions, it is impossible to control the quality of installation or the varying conditions in which they are used. It is for this reason that absolutely no warranty or guarantee is either written or implied. Neither the seller nor the manufacturer will be liable for any loss, damage, or injury – direct or indirect – arising from the use of or inability to determine the use of any product. Before using, the user should determine the suitability of the product for its intended use, and the user shall assume all responsibility in connection therewith. Spohn Performance, Inc. makes no guarantee as to the legality for any specific class. Spohn Performance, Inc. makes no claims, nor does it intend its products to be used in street driven vehicles. Spohn Performance, Inc. reserves the right to make changes in design or add to or improve on their product without incurring any obligation to install the same on product previously manufactured. The Buyer agrees to indemnify and hold Spohn Performance, Inc. harmless from any claim, action or demand arising out of or incident to the Buyer's installation or use of products purchased from Spohn Performance, Inc.

INSTRUCTIONS

1. Block the rear tires of the vehicle so that the vehicle is stable and can't roll.
2. Locate the driver's side lower shock mount and (2) 5/16" x 1" bolts, (2) 5/16" lock nuts and (4) 5/16" flat washers. Remove the front upper control arm's front mounting bolt. You may need to bend the brake line for proper clearance. Install the driver side lower shock mount on the outside of the upper control arm mounting bracket. Secure the lower hole in the shock bracket to the stock front upper control arm mount using (1) 5/16" x 1" bolt, (1) 5/16" lock nut and (2) 5/16" flat washers (hole provided, do not tighten at this point). There is a hole provided to fit the upper bolt in the new shock bracket, in some cases this hole needs to be enlarged. If this is the case use the bracket as a guide and drill a 5/16" hole into the stock front upper bracket. Secure upper hole in shock bracket to stock upper control arm mount using (1) 5/16" x 1" bolt, (1) 5/16" lock nut and (2) 5/16" flat washers (do not tighten at this point). Repeat procedure on the passenger's side. **(See Illustration #1)**
3. Working on the driver's side install the supplied 12mm x 100mm front upper control arm's mounting bolt, flat washer and flanged lock nut. When installing the front bolt, the front bolt will now also go through the new lower shock mount (do not tighten at this point). Repeat procedure on passenger's side. **(See Illustration #2)**
4. Working on the driver's side, locate the supplied universal 9/16" shock bolt (that came with our kit) and install it to the newly installed lower dual shock bracket, torque to 90 ft./lbs. Repeat procedure on passenger's side. **(See Illustration #3)**
5. Working on the driver's side, disconnect the top of the shock. Locate the new upper dual shock bracket. Install between the stock upper coil spring pocket and the stock upper shock bracket. You will need to grind one leg of the stock upper shock bracket so it sits flat on our upper dual shock bracket and does not hit the welds **(See Illustration #7 & 8)**. Secure using the 3/8" hardware that is used in securing the upper coil spring spacer to stock upper coil spring pocket and tighten to 32 ft./lbs. Repeat procedure on the passenger's side. **(See Illustration #4)**
6. Working on the driver's side, locate (1) 1/2" x 3" bolt, (1) 1/2" lock nut and (2) 1/2" washers. Install the shock to the upper shock bracket, secure using 1/2" hardware and torque to 85 ft./lbs. Repeat procedure on the passenger's side. **(See Illustration #5)**
7. Working on the driver's side, install the bottom of the shock to the lower shock bracket. Slide lower shock over the universal shock bolt and secure using the 9/16" hardware. Torque to 90 ft. lbs. Repeat procedure on the passenger's side. **(See Illustration #6)**
8. Tighten both front upper control arm mounting bolts to factory specifications.
9. Tighten all of the 5/16" bolts for the lower shock mounting brackets to 18 ft./lbs.

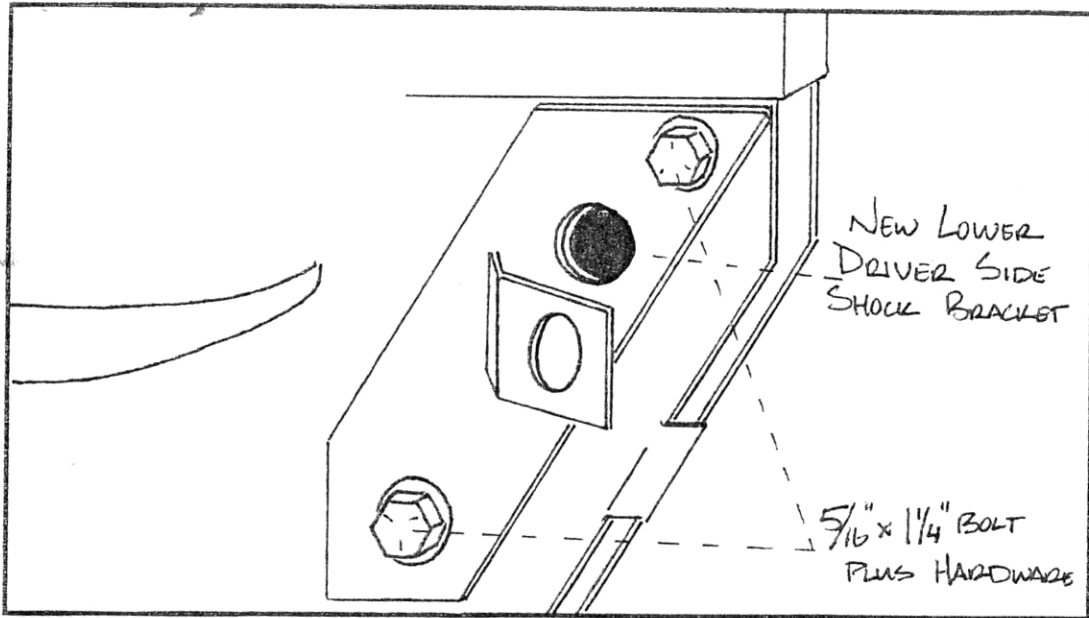


ILLUSTRATION # 1

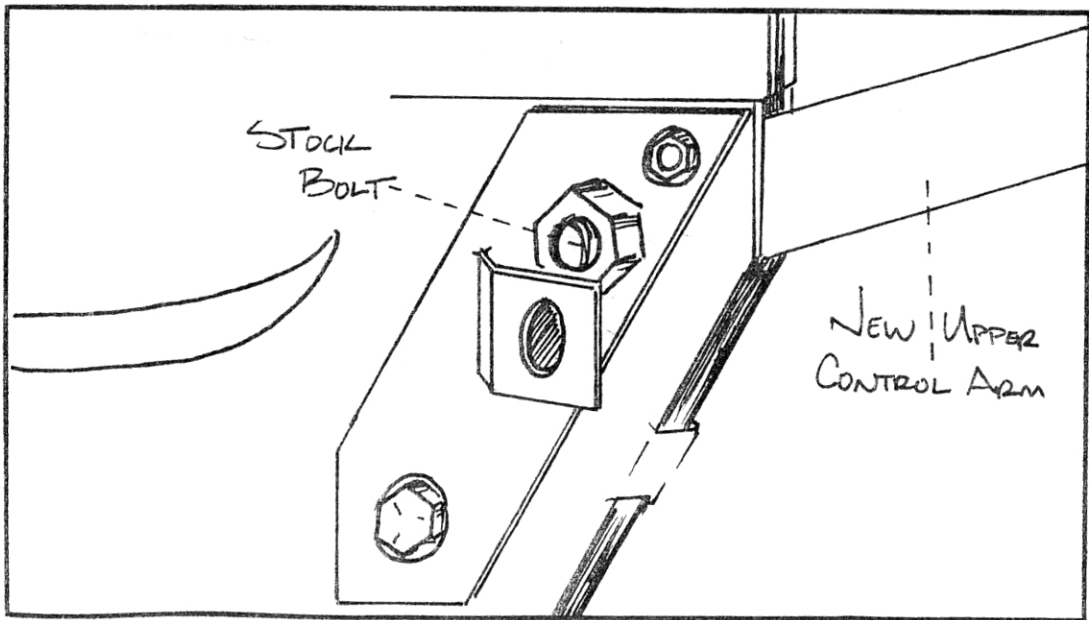


ILLUSTRATION # 2

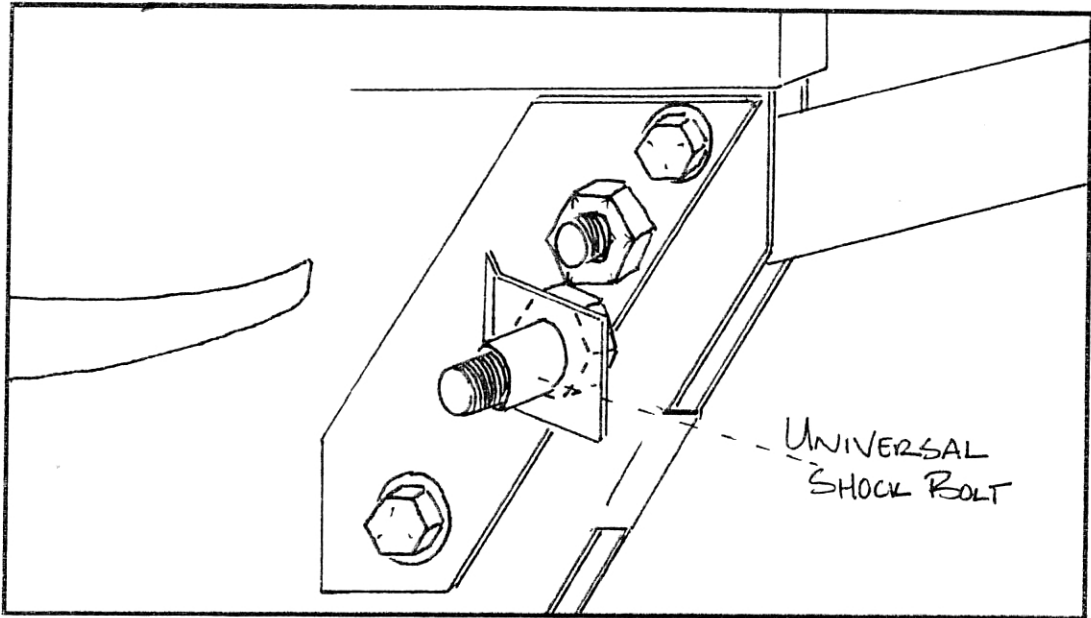


ILLUSTRATION # 3

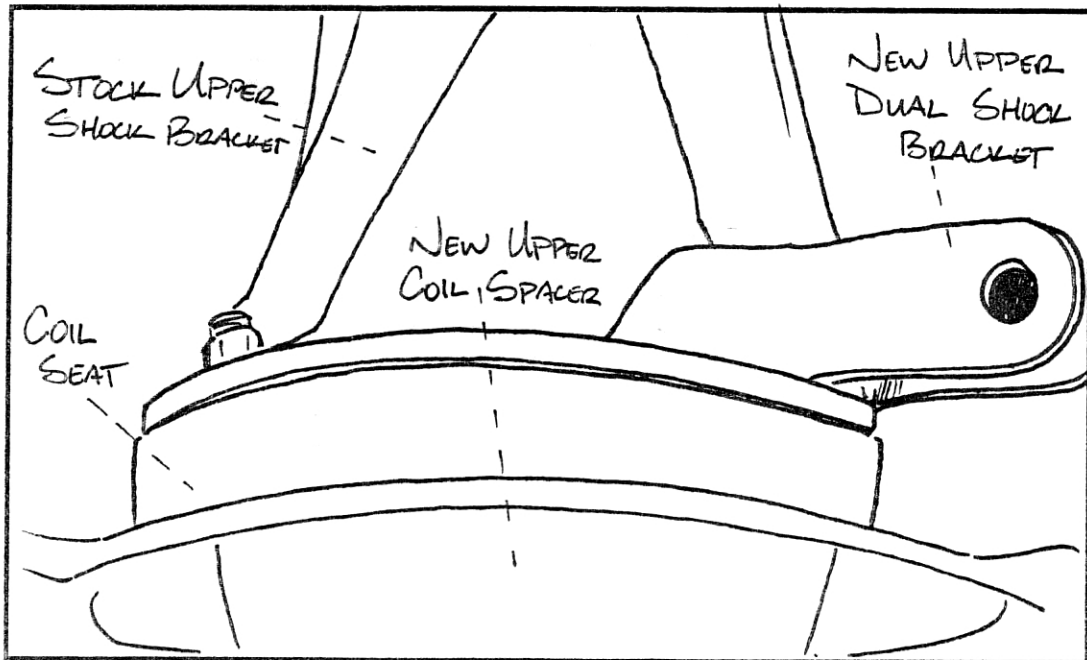


ILLUSTRATION # 4

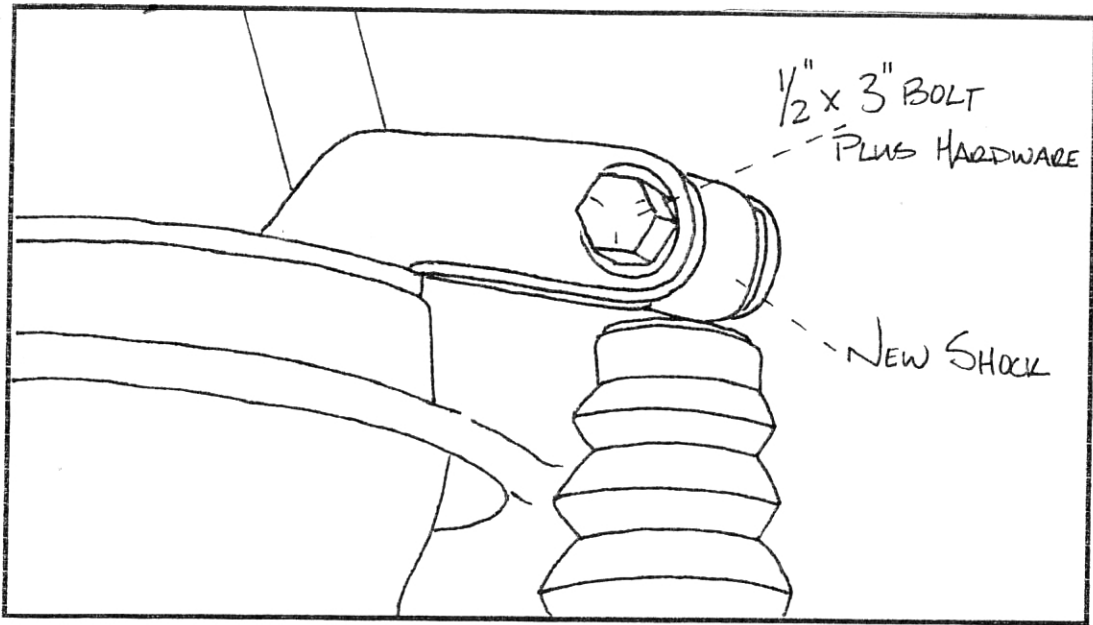


ILLUSTRATION # 5

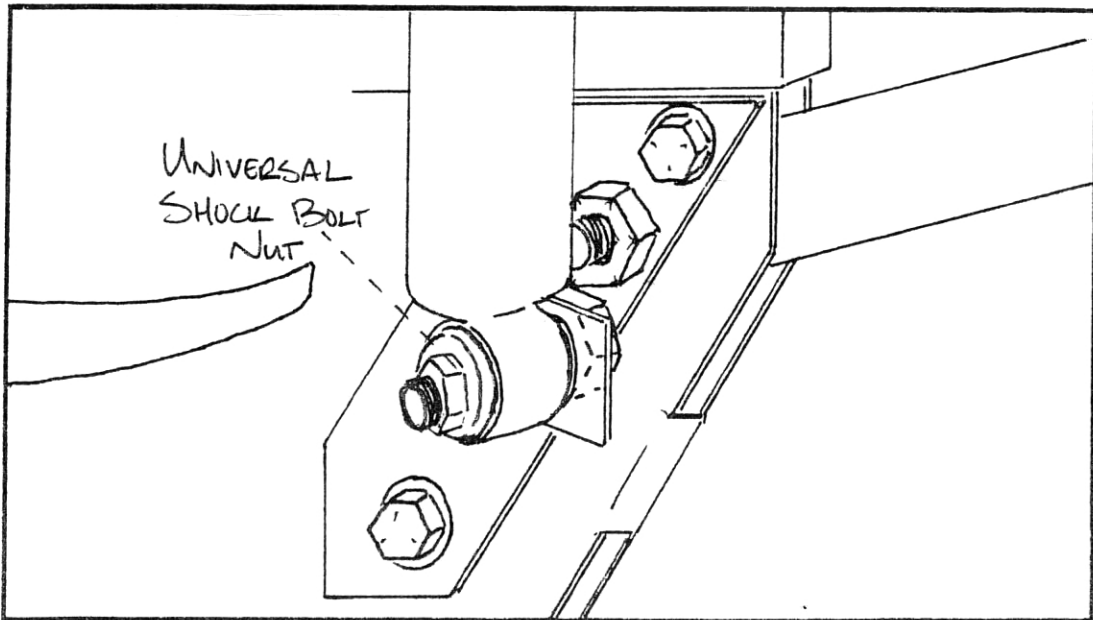


ILLUSTRATION # 6

Illustration 7 and 8 below show how you must round the corners on one ear of the stock upper shock mount so it clears the welds inside of the supplied upper dual shock mount.

Illustration 7



Illustration 8

