

sPOD SE BLUETOOTH MODULE INSTALLATION INSTRUCTIONS

Revision 2.0



REQUIREMENTS

- Devices must be Bluetooth 4.0 compatible
- Android **4.4 KitKat** or newer operating system
- iPhone 4s or newer; iPad 2 or newer; iPad mini – **iOS 7** or newer
- Existing **SE sPOD** system
- Access to iTunes App Store or Google Play Store

INCLUDES

- SE System Bluetooth Module

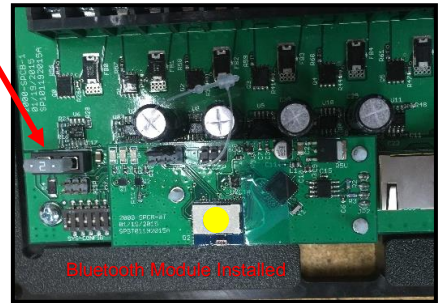
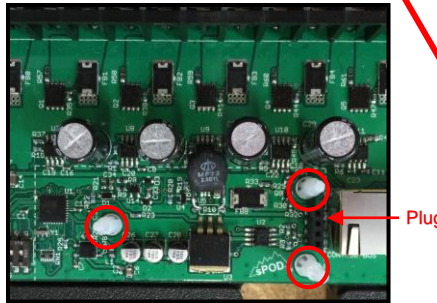
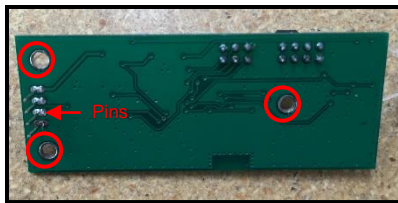


INSTALLATION

Video Instructions: “sPOD SE System Bluetooth Module FAQ 5”

BEFORE STARTING!! During Installation be sure that you are at least 400 feet from any other sPOD wireless system and no other devices have the app activated.

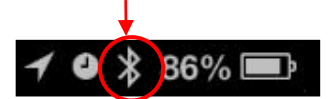
1. Plug the Bluetooth Module into your existing SE source board.
 - i) Line up the 3 plastic white stand-offs on the SE board with the holes in the Bluetooth Module.
 - ii) Make sure the pins on the Bluetooth Module are also lined up with the existing Socket on the SE board.
 - iii) Carefully press down on the Bluetooth Module until it seats into place. You do not need to press down until the stand-offs lock, only until snug.
2. Pull the 2 amp fuse out of the Source for 30 seconds and replace. Then start the engine.



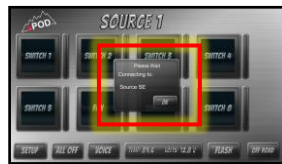
PAIRING THE BLUETOOTH DEVICE



Start by going to Google Play for Android devices or iTunes for Apple devices and search “sPOD Bantam”. Download the sPOD Bantam app onto your smartphone or tablet. Be sure that your device’s Bluetooth is turned on.



Start the Bantam app and then tap “SETUP”, then tap “SCAN” Within 10 seconds, the app will connect to the Source SE.



You are now ready to start using and controlling yoursPOD with your smart phone or tablet!

SETTING THE PIN

(Setting a custom PIN prevents others from connecting to your Bluetooth Module & secures your device to the Module)

IMPORTANT!! DO NOT change the PIN until Bluetooth Module is connected.
Make sure to test that the switches on the app are working to control the SE sPOD system.

1. Within the app, tap “SETUP” then tap “SOURCE SE” to open PIN dialogue box.
2. Touch in the “Old PIN” box and enter “0000” (4 Zeros).
3. Touch in the “New PIN” box to create your custom pin “XXXX” (numbers only) then tap “PAIR.”



sPOD SE BLUETOOTH MODULE INSTALLATION INSTRUCTIONS

Revision 2.0



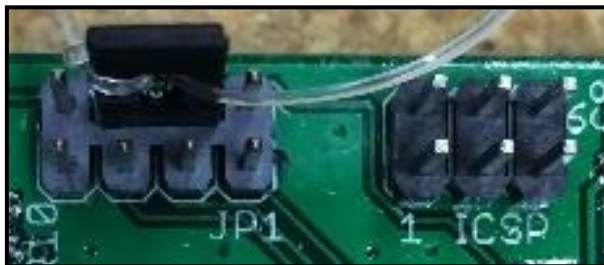
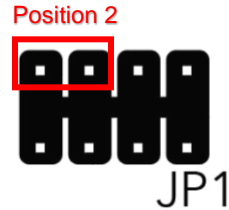
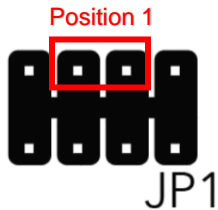
TO RESET THE PIN

On the Module

- Remove the jumper from the top two middle pins of JP1.
- Install the jumper on the top left two pins of JP1 (Position 2).
- Wait 5 seconds.
- Reinstall the jumper on the top two middle pins of JP1 (Position 1).

On the App

- Input "0000" in both the Old and New PIN spaces and "Update."
- Or for a new device or app reinstalled, the PIN has been set to "0000" as factory should connect.



CUSTOMIZATION

- In the SETUP menu, you can customize:
 - The names of the switches
 - The features of the switches (Dim, Momentary, Strobe, Switch Link and Flash)
 - The color of the switches, color of the background, icons/pictures can be added
- You can also select which Source to control if you have multiple sources by simply swiping left or right
- Utilize the "Help" button to access help videos



TROUBLESHOOTING

(If the app will not connect)

1. Be sure that no other sPOD Bluetooth devices are within 400 feet and that no other devices are running the app.
2. Close the app completely on the device.
3. Pull the 2-amp fuse from the SE Source Board and wait 30 seconds then reinstall the fuse.
4. Start the vehicle's engine and start the app then follow the standard procedure to connect.