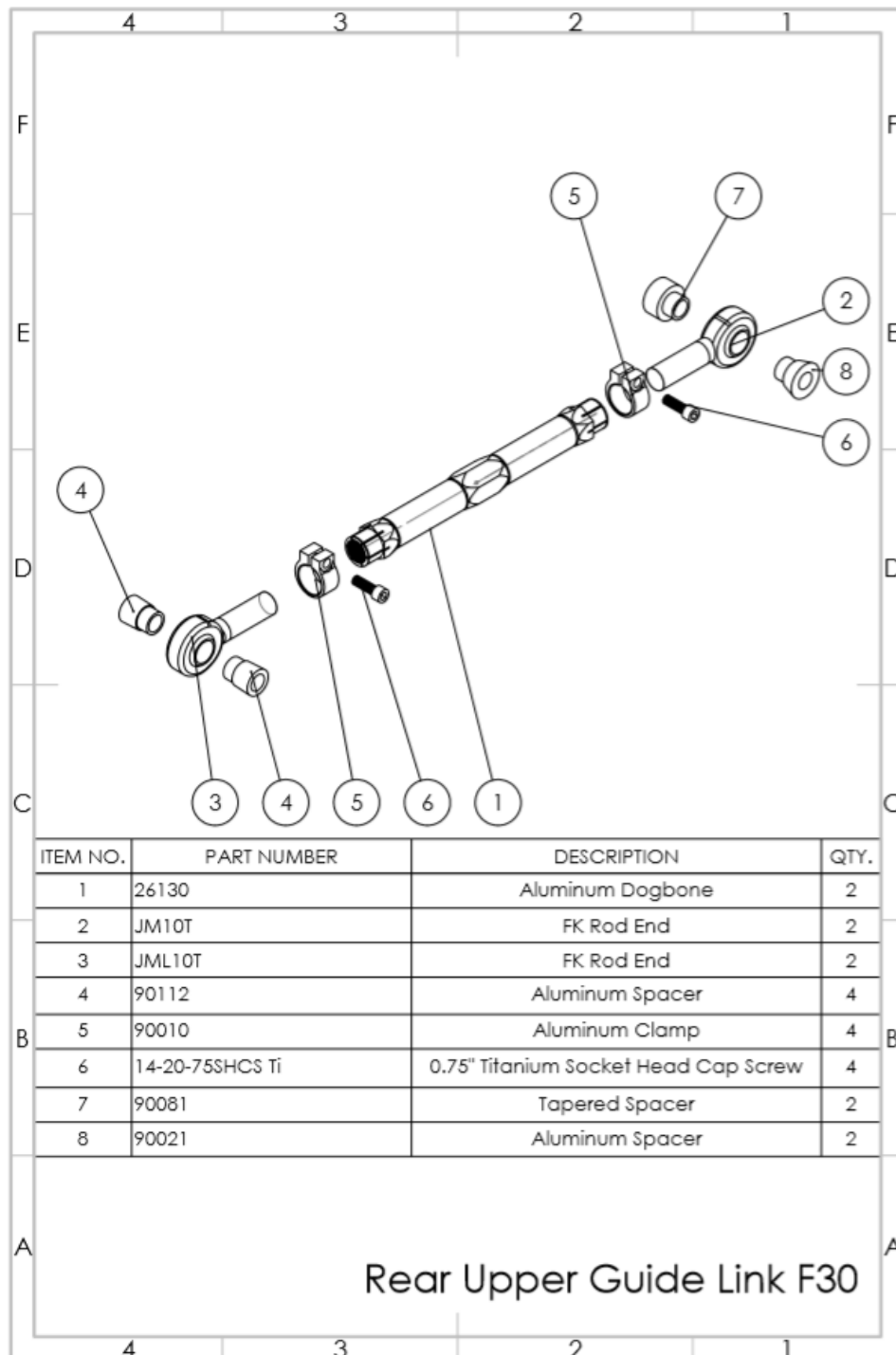
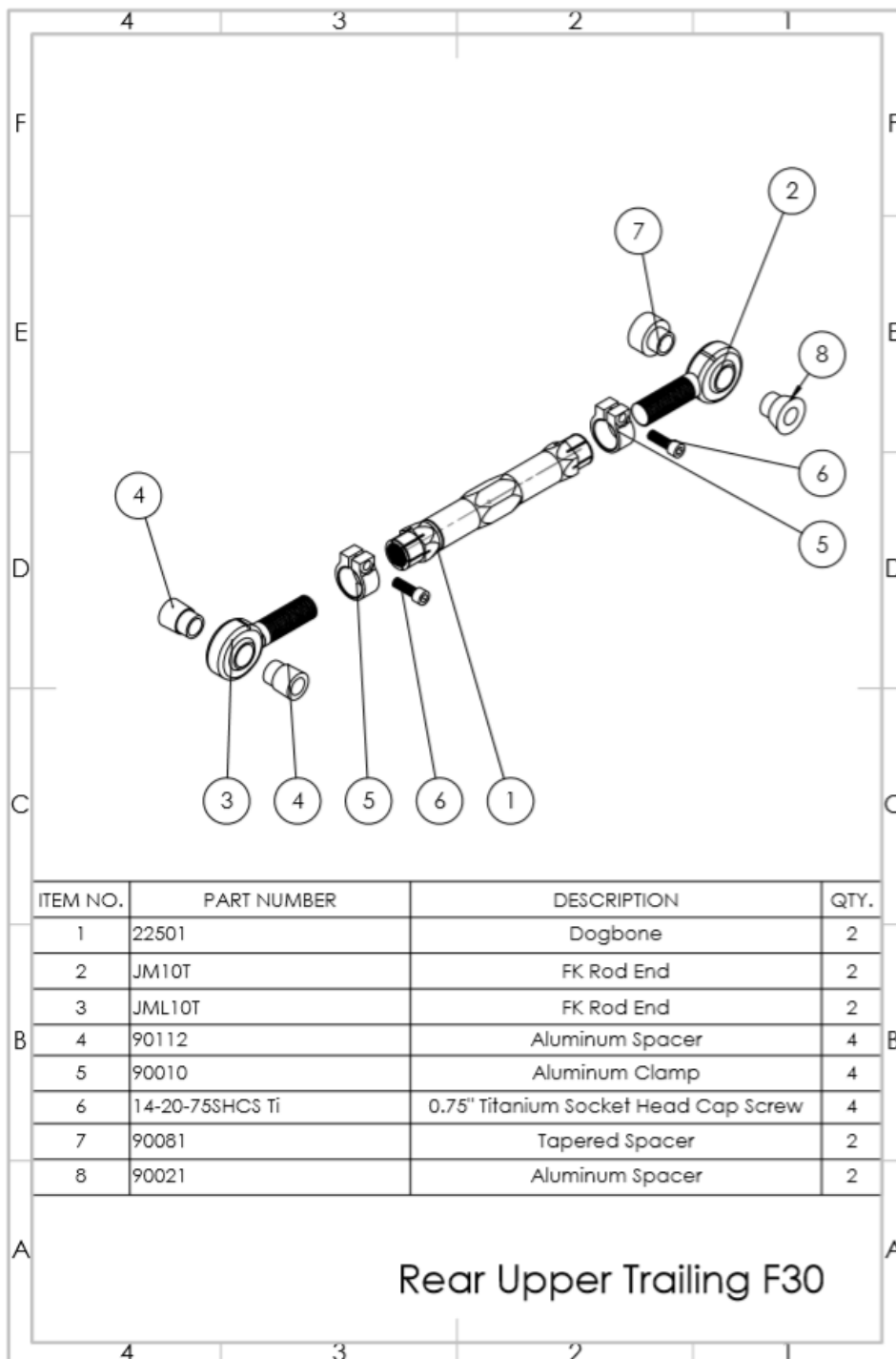


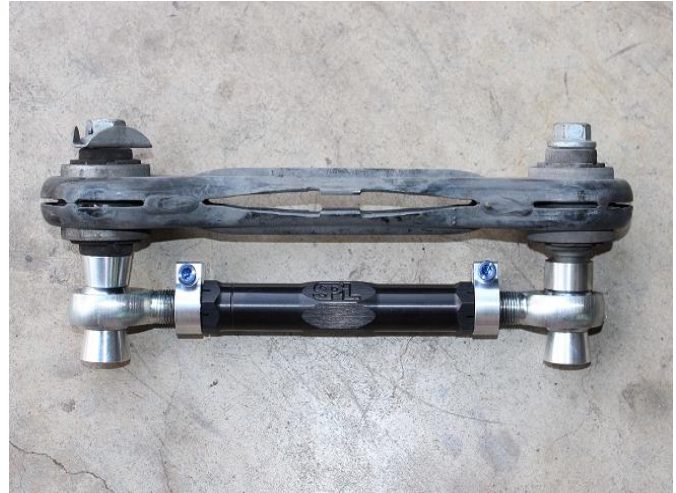
Rear Wishbone Links Kit Installation Instructions SPL RUA F3X





Rear Upper Guide Link Instructions

1. Remove the OEM arm.
2. Set SPL Parts Arm next to the OEM arm. Use the bolts through the stock arm to set the SPL Parts Arm to the exact length of the OEM arm, ensuring equal thread engagement on both ends. Please refer to the picture on the left. Note the groove on one side of the SPL arm to indicate the left hand threads.



3. Install the SPL Parts Arm using the OEM hardware.. Tighten the nuts to **73.7 ft. lbs.** (100 N/M) at both ends. **DO NOT OVERTORQUE.** *SPL Parts is not liable for any issues due to overtorque.*
4. Once the Arm is installed, check both FK Rod Ends (2, 3) are centered in their articulation and lock. Tighten the Blue Titanium Socket Head Cap Screws (6) to 150 **IN. lbs.**
5. Professional alignment is recommended. Take your vehicle to an alignment shop, bringing these instructions with you to ensure that the arm is adjusted correctly.

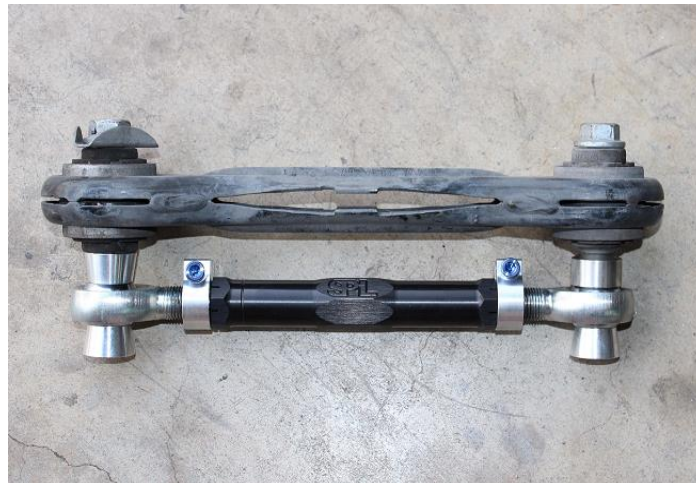


Rear Upper Wishbone Link Instructions



1. Using a flat head screwdriver, remove the clips attaching the ABS sensor wire from the OEM arm.
2. Remove the OEM arm
3. Set the SPL Parts Arm next to the OEM arm. Use the bolts through the stock arm to set the SPL Parts Arm to the exact length of the OEM arm ensuring equal thread engagement on both ends.

Please refer to the next picture. Note the groove on one side of the SPL Parts Arm to indicate the left hand threads.



4. Install the SPL Parts Arm using the OEM hardware. Please ensure the Tapered Stainless Steel Spacer (7) provided mates up with the tapered section of the knuckle. Tighten the nuts to **73.7 ft. lbs.** (100 N/M) at both ends. **DO NOT OVERTORQUE!** *SPL Parts is not liable for any issues due to overtorque.*





5. Once installed, ensure that both of the FK Rod Ends (2, 3) are centered and have full articulation. Lock them in place by tightening the Blue Titanium Socket Head Cap Screws (6) with a 3/16 allen wrench to 150 **IN. lbs.**



6. Attach the ABS sensor wire clips to the SPL Parts arm.

7. Professional alignment is recommended. Take your car to an alignment shop and bring these instructions with you to ensure that the arm is adjusted correctly.

Adjusting the Length of the Links for Alignment

Loosen the Aluminum Clamps on both ends of the Aluminum Dogbone. Turn the Dogbone so as to thread in/out the FK Rod Ends. Threading in/out the Dogbone will in turn thread out/in both rod ends. Once the assembly is the correct length, tighten down the Aluminum Clamps by torquing the Blue Titanium Socket Head Cap Screws (7) to 150 **in. lbs.** Note the thread engagement should not exceed the measurement pictured on the right.

