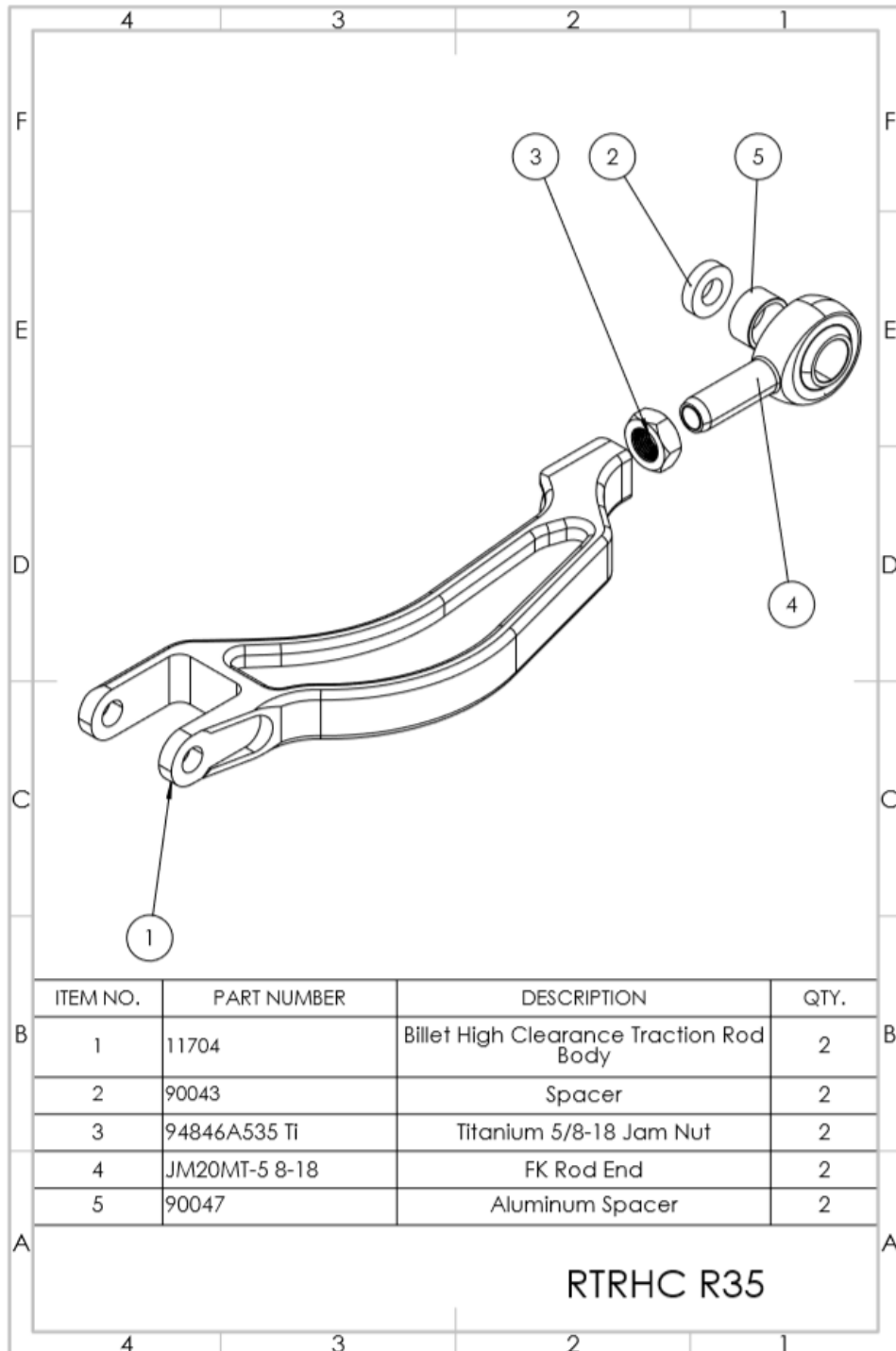
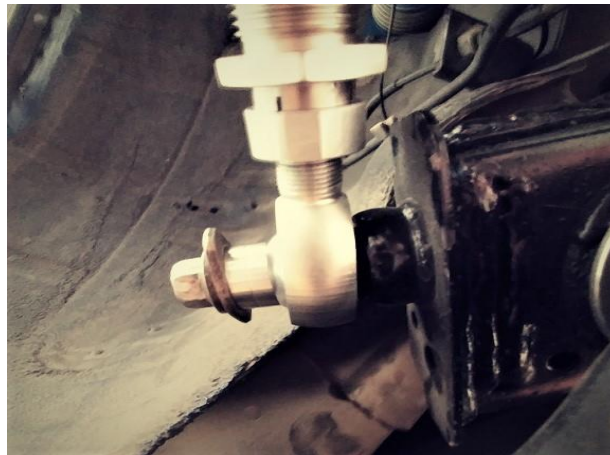


# High Clearance Traction Rods Installation Instructions SPL RTRHC R35



Thank you for your purchase of this SPL Parts performance suspension product. Please follow these instructions exactly to ensure that the product is able to function to the best of its ability, and you can achieve the most performance out of your vehicle.

1. Remove the stock traction arm from your vehicle.
2. Measure from the center of the bolt hole to the center of the bolt hole on the opposite end of the OEM arm and set your SPL Parts Rear Traction Arm to that length. Make sure you do not exceed maximum extension of the FK Rod End (4), which is a 5/8" extension.
3. Attach the SPL Parts Arm to arm to the subframe. Make sure to install the FK Rod End right up against the chassis to give maximum wheel clearance as shown below. Use the aluminum spacer (5) to fill the rest of the space on the stud between the rod end and the bolt. If the nut bottoms out before the arm is tight, use the Spacer (4). (Picture is older design with the Double Adjuster. The new design of the Arm does **not** have the Double Adjuster).



4. Attach the SPL Parts Rear Traction Arm to the knuckle by reusing the factory nut and bolt as shown.
5. Torque all of the bolts to factory specs and make final adjustments.
6. Have the car professionally aligned. Take these instructions with you to ensure that the arms are adjusted correctly.
7. Be safe and enjoy your new upgrade!