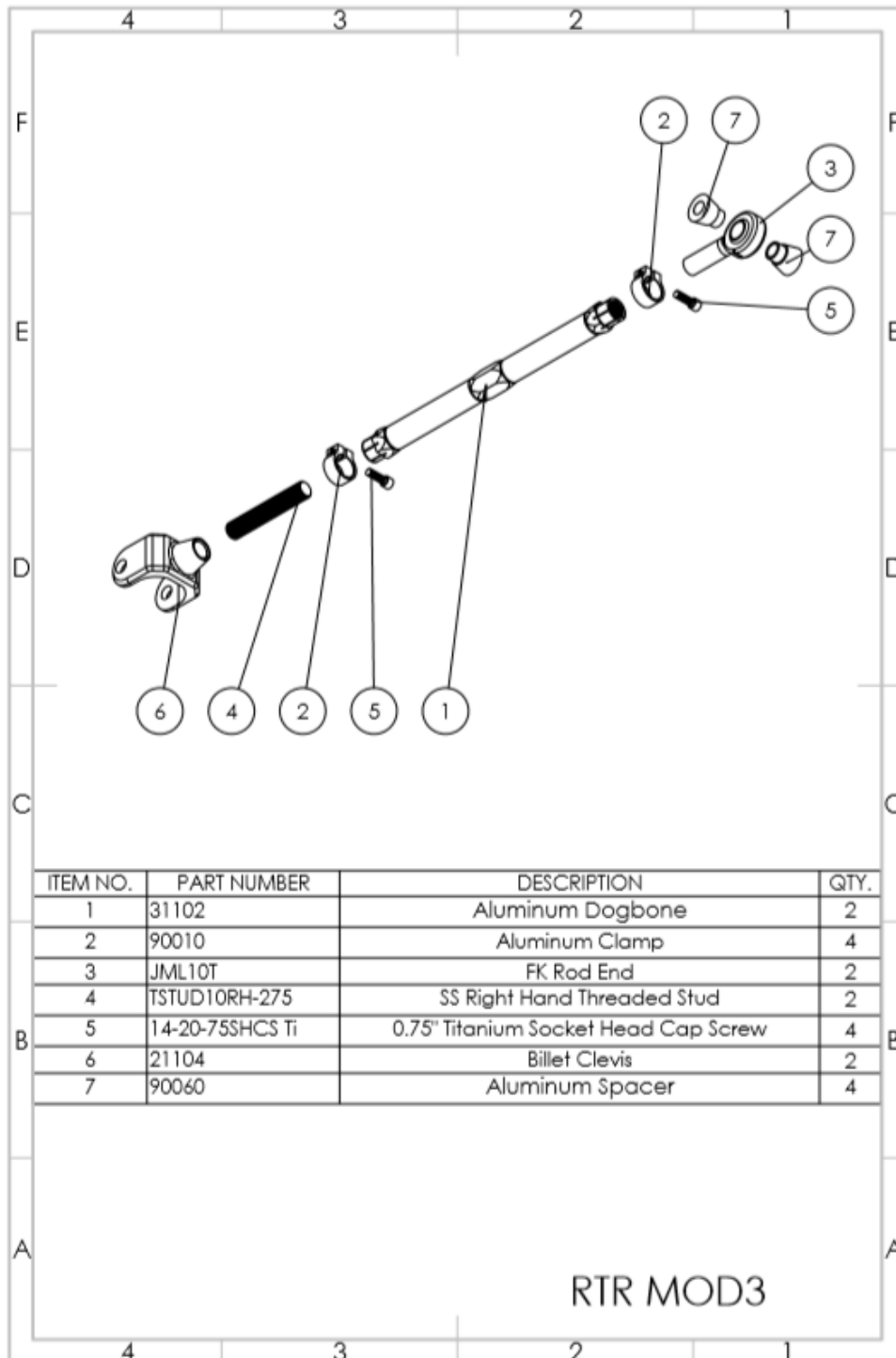


Rear Lower Control Arm Kit Installation Instructions SPL RTR MOD3



1. Lift the rear of the vehicle and remove the rear wheels.
2. Remove the OEM arm.
3. Set SPL Parts Arm next to the OEM arm. Change the length of the SPL arm by rotating the dogbone (1) until it is the same length as OEM, lining up the holes with the OEM bolts.
4. Install the SPL Parts Arm using the OEM hardware. Tighten the nuts to 74 **ft. lbs.** (100 N/M) at both ends. **DO NOT OVERTORQUE.** *SPL Parts is not liable for any issues due to overtorque.*
5. Once the Arm is installed, check the FK Rod End (3) at the chassis is centered in its articulation. Tighten the Blue Titanium Socket Head Cap Screws (5) until the assembly cannot rotate, up to maximum of 150 **IN. lbs.**
6. Professional alignment is recommended. Take your vehicle to an alignment shop, bringing these instructions with you to ensure that the arm is adjusted correctly.

Adjusting the Length of the Links for Alignment

Loosen the Aluminum Clamps on both ends of the Aluminum Dogbone. Turn the Dogbone so as to thread in/out the FK Rod Ends. Threading in/out the Dogbone will in turn thread out/in both rod ends. Once the assembly is the correct length, tighten down the Aluminum Clamps by torquing the Blue Titanium Socket Head Cap Screws (5) to 150 **in. lbs.** maximum, or until the assembly cannot be rotated easily. Note the thread engagement on the rod end should not exceed the measurement pictured on the right (0.625"). For the Clevis (6) end, there can be up to .75" of thread exposed.

