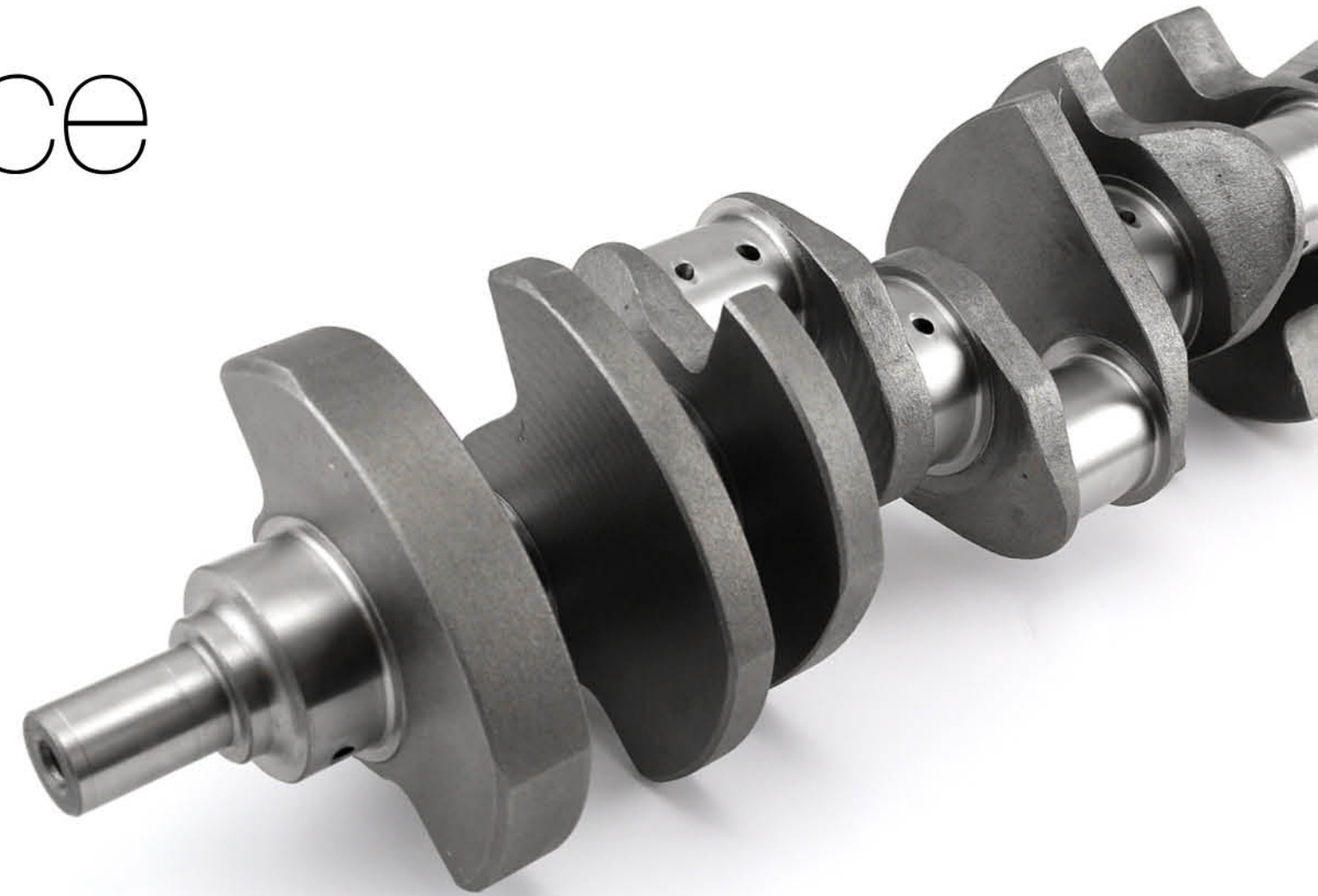


Brute Force



500hp+

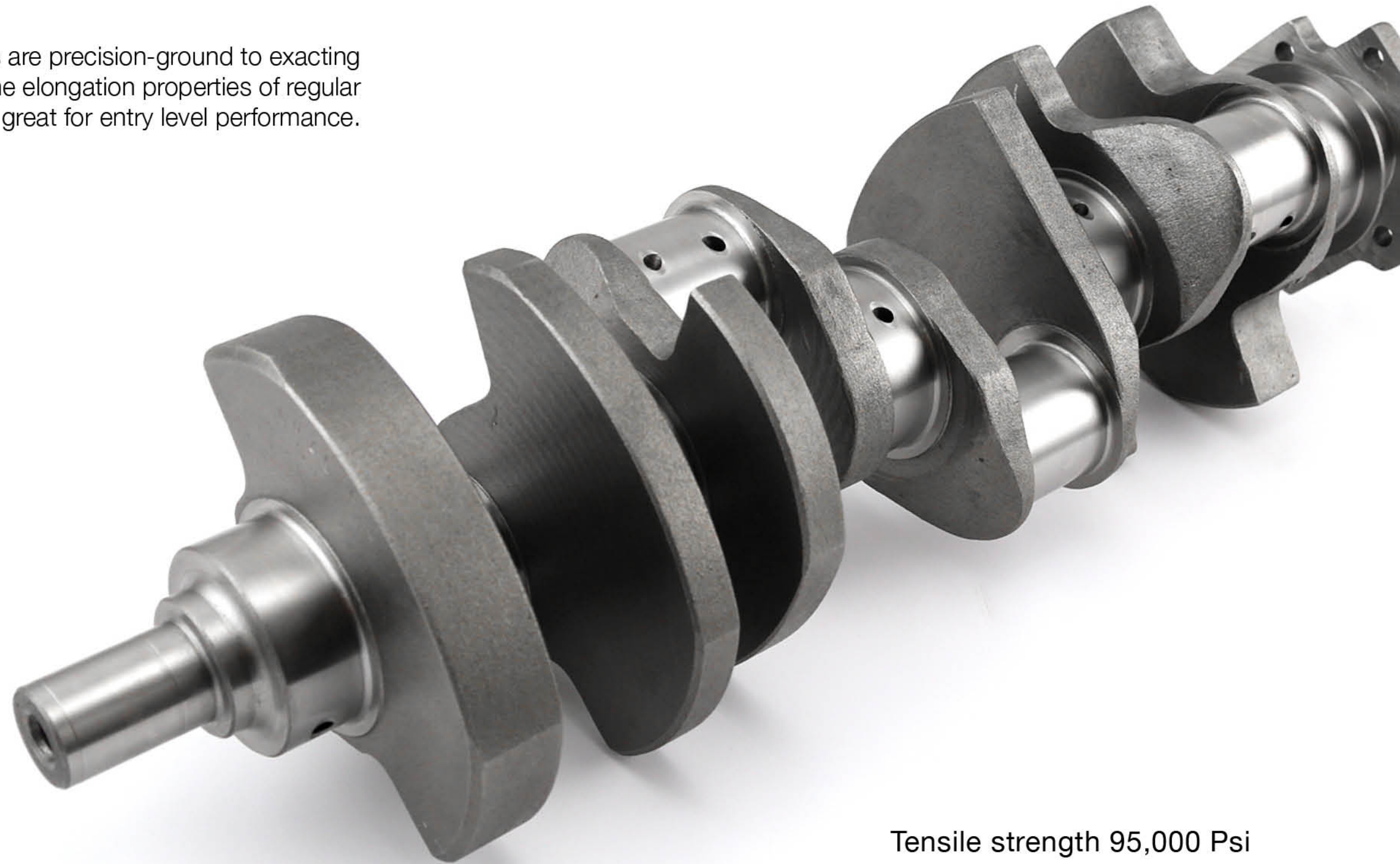
Speedmaster™ cast nodular iron crankshafts are perfect for mildly built street engines or just to replace stock crankshafts that have seen better days.



Greater smoothness

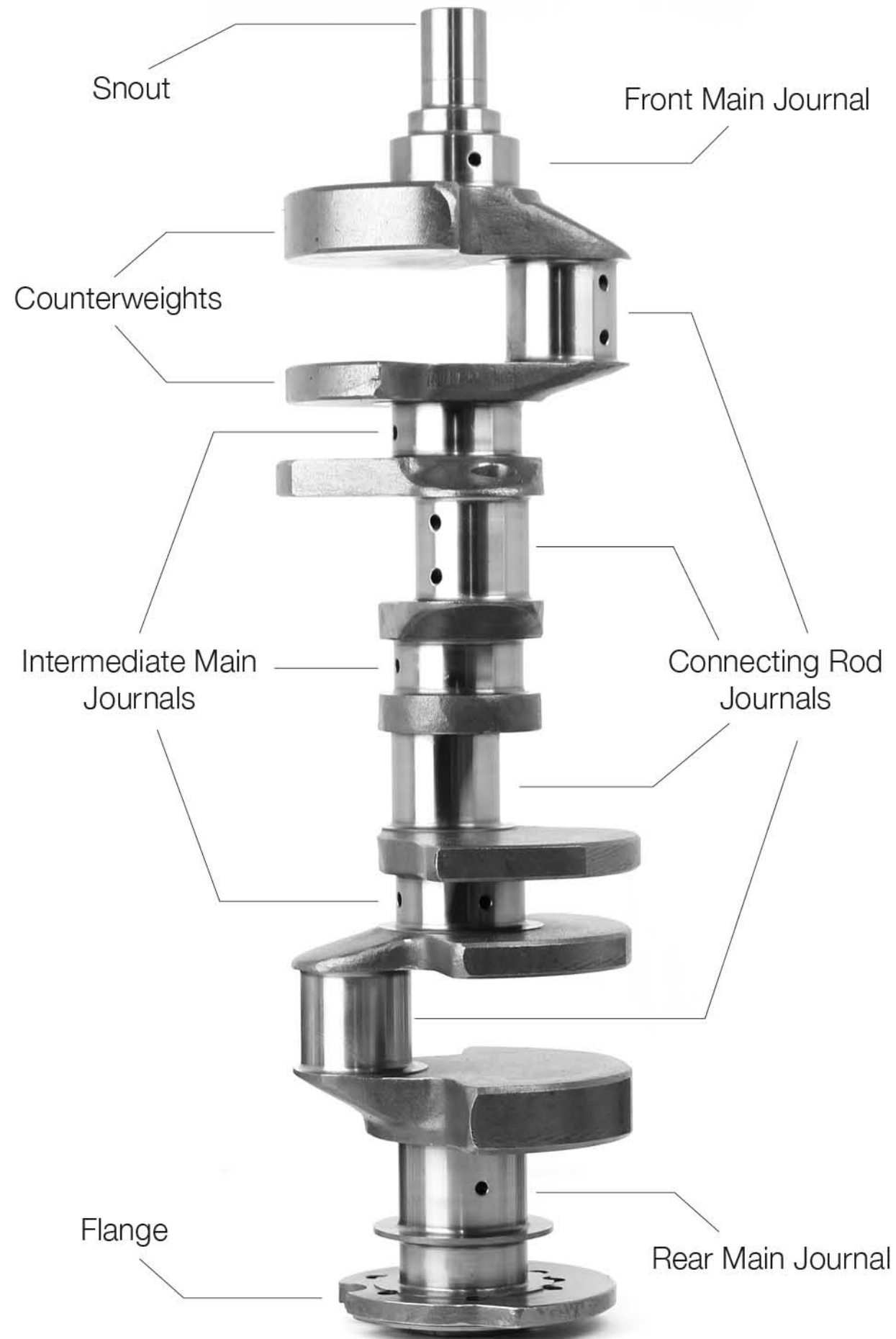
Nodular Iron Cast Crankshafts

Speedmaster™ crankshafts are precision-ground to exacting tolerances. Featuring twice the elongation properties of regular cast iron these cranks are great for entry level performance.



Tensile strength 95,000 Psi

The Spine Of Your Engine

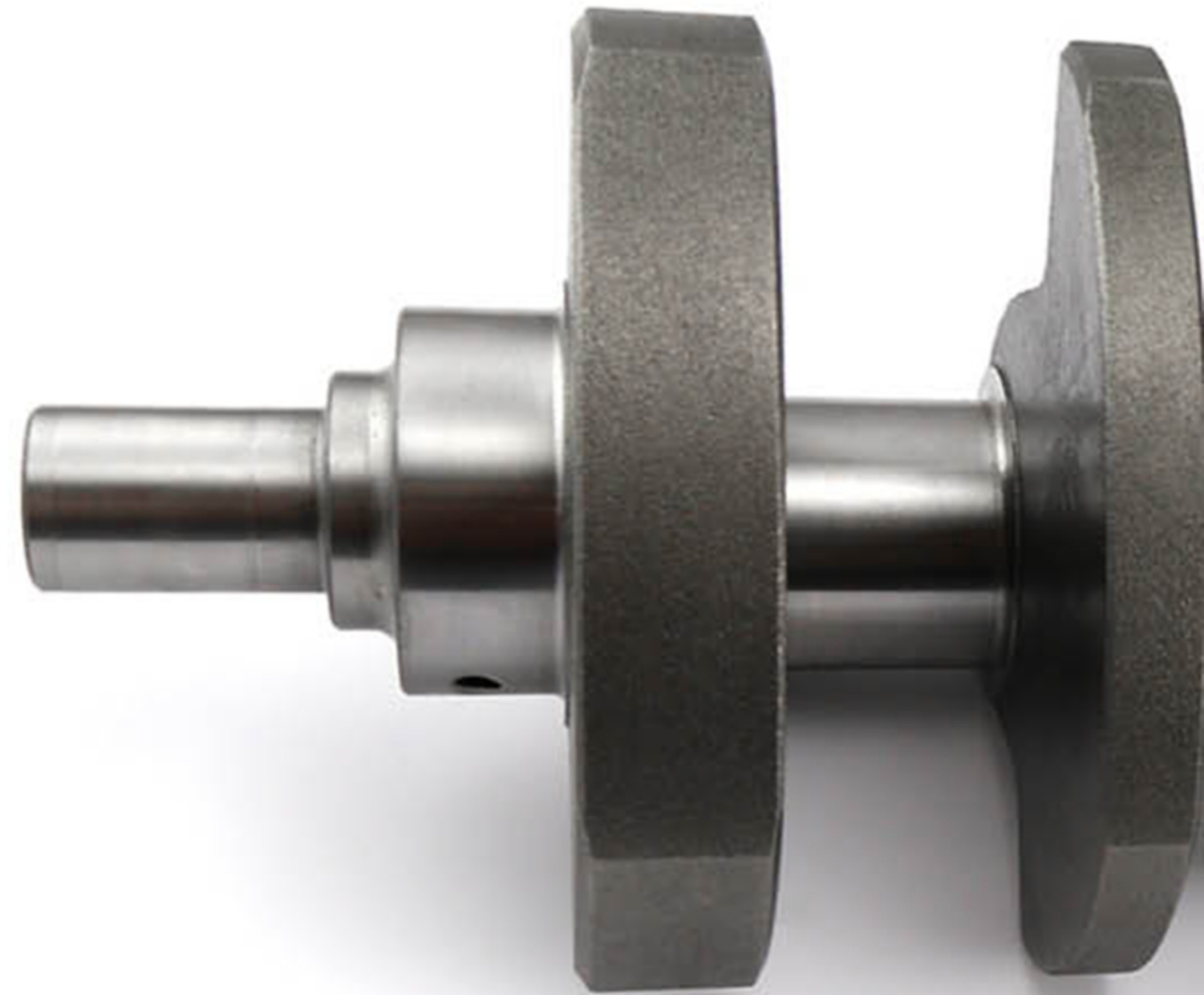


The crank is what transfers the up and down reciprocating movement of the piston and rod into the rotating motion required to drive the transmission. Carrying the weight of all eight rods and pistons, it must deal with the shock loads of the combustion process.

Example shows a SBC 2pc RMS

Surface Finish

Speedmaster™ crankshafts are precision-ground to exacting tolerances.



Precision Ground



Mild Application

Perfect for mildly built
street engines or to
replace your stock
crankshaft.

Nodular Cast Iron

Brand:Speedmaster
Part Number: 1-276-010
Part Type:Crankshafts

Rear Main Seal Style:Standard
Engine Stroke (in):3.400 in.
Crankshaft Material:Cast steel
Engine Balance:28/50 oz. External
Lightened:No
Requires Narrow Bearings: See notes below
Rod Bearings Included: No
Main Bearings Included: No
Rod Journal Diameter (in): 2.123 in.
Main Journal Diameter (in): 2.2486 in.
Minimun Rod Length (in): 5.400 in.
Balancer Bolt Thread Size: Standard
Crankshaft Snout Style: Standard
Quantity:Sold individually.

Check the bearing to crank radius clearance. Rod

Notes:bearings may need to be chamfered or alternatively use narrow rod bearings.

Tool:[Stroker Combinations](#)

These Speedmaster cast crankshafts are perfect for mildly built street engines or just to replace stock crankshafts that have seen better days. These Speedmaster crankshafts are precision-ground and micro-polished to exacting tolerances.