

SPEED BY SPECTRE™

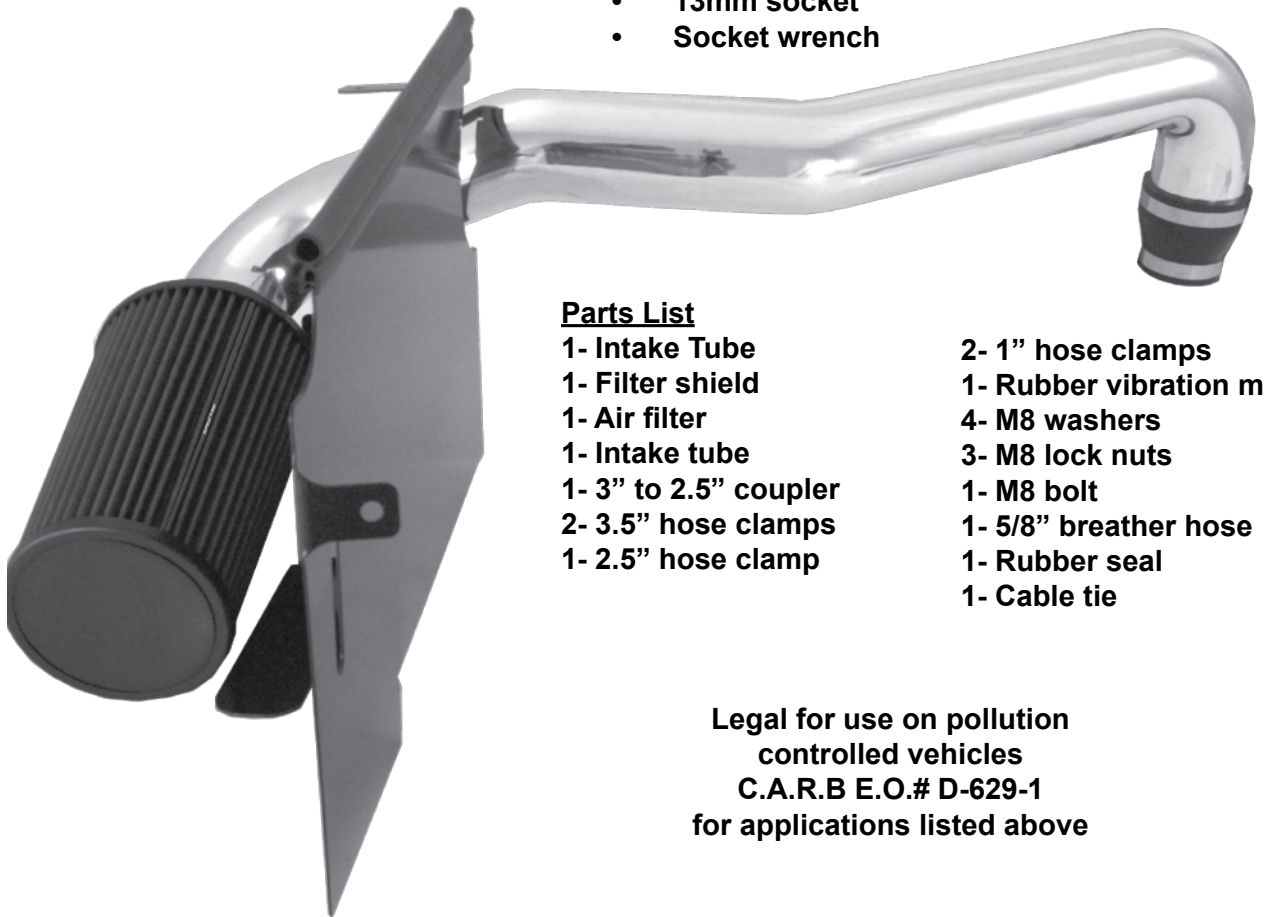
Intake Installation Instructions P/N 9940

Year/Make/Model/Engine

97-02 Jeep Wrangler 2.5L

Tools Required:

- 5/16" Nut driver or Flat blade screwdriver
- 10mm wrench
- 12mm wrench
- 13mm wrench
- 8mm socket
- 10mm socket
- 12mm socket
- 13mm socket
- Socket wrench



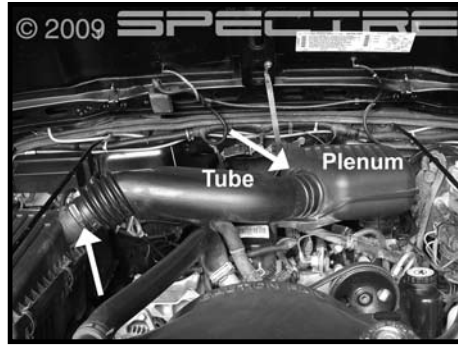
Parts List

- | | |
|-----------------------|---------------------------|
| 1- Intake Tube | 2- 1" hose clamps |
| 1- Filter shield | 1- Rubber vibration mount |
| 1- Air filter | 4- M8 washers |
| 1- Intake tube | 3- M8 lock nuts |
| 1- 3" to 2.5" coupler | 1- M8 bolt |
| 2- 3.5" hose clamps | 1- 5/8" breather hose |
| 1- 2.5" hose clamp | 1- Rubber seal |
| | 1- Cable tie |

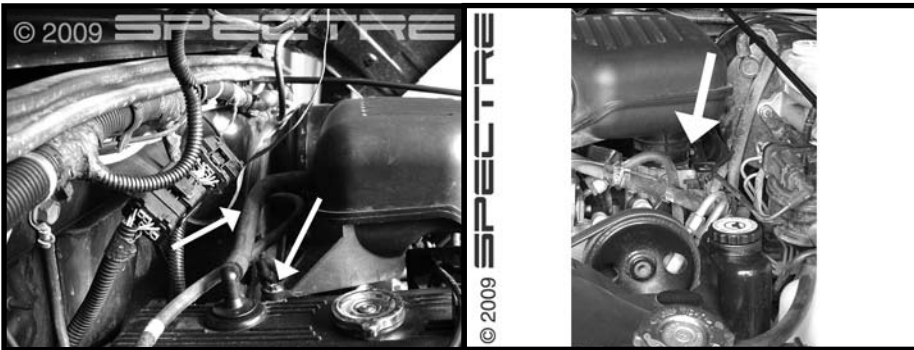
Legal for use on pollution
controlled vehicles
C.A.R.B E.O.# D-629-1
for applications listed above



Step 1
Make sure engine is cool and vehicle is parked on a level surface with parking brake set. Disconnect the negative battery terminal.



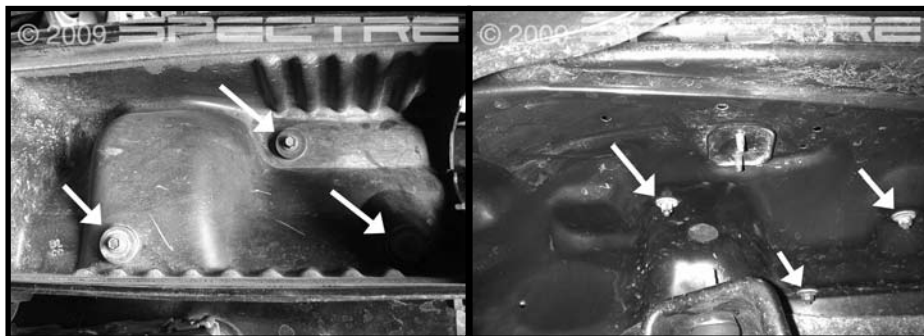
Step 2
Loosen the two hose clamps on the stock intake tube and remove the tube.



Step 3
Remove the breather hose between the plenum and valve cover. Remove the two bolts holding the plenum to the valve cover. Loosen the hose clamp holding the plenum to the throttle body. Remove the plenum.



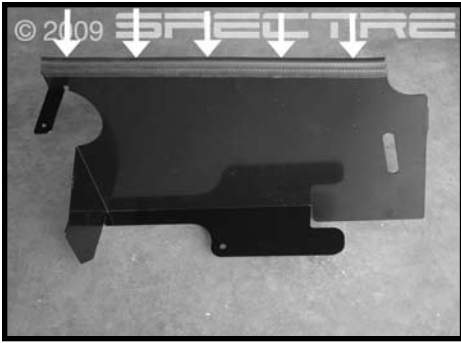
Step 4
Remove the air box lid and filter element.



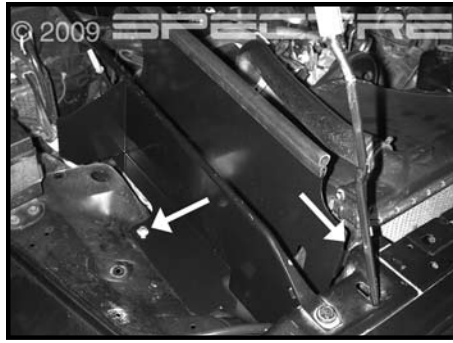
Step 5
Remove the three bolts holding the lower air box in place (it may be necessary to hold the nuts on the inner fenderwell). Remove the lower air box.



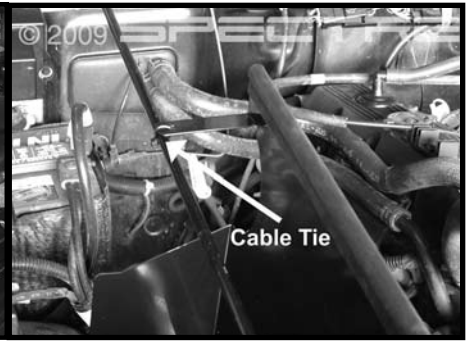
Step 6
Remove upper radiator mounting bolt (shown) and set aside for later use.



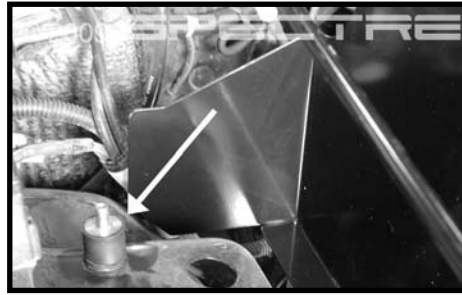
Step 7
Install the rubber insulator on the filter shield as shown.



Step 8
Install Spectre heat shield using the supplied bolt on the fenderwell, the factory bolt (removed in Step 6), and the supplied cable tie (attaches to brace).



Step 9
Install the reducer boot onto the throttle body and secure with the supplied hose clamp.



Step 10
Install the supplied rubber mount in the lower air box mounting hole as shown.



Step 11
Install the supplied breather hose onto the Spectre intake and secure with the supplied clamp. Install the second clamp onto the hose, but leave loose at this time.



Step 12
Install the large hose clamp on the reducer boot. Install the Spectre air intake tube into the boot. Attach the other end to the rubber mount using the supplied hardware. Fully tighten the clamps on the throttle body and the mounting hardware.



Step 13
Attach the breather hose to the valve cover. Fully tighten the clamps.



Step 14
Install the Spectre air filter onto the intake tube. Fully tighten the clamp.



Step 15
Start up the engine and check for any air leaks. Your installation is now complete. Periodically check all clamps and brackets. Affix carb E.O. sticker in a prominent place under the hood. Enjoy your Spectre Intake System.

Product Info:
Performance Air Induction
System P/N 9940


SPEED BY SPECTRE™

Check out the collection of performance air intake systems we offer.