

# **SPEED BY SPECTRE®**

*The 400mph Company™*

## **Intake Installation Instructions**

**P/N 9935 (red filter) - P/N 9935B (blue filter)**  
**P/N 9935K (black filter) - P/N 9935W (white filter)**

### **Year/Make/Model/Engine**

2005-2010 Chrysler 300C 5.7L-6.1L Hemi  
2005-2008 Dodge Magnum 5.7L-6.1L Hemi  
2006-2010 Dodge Charger 5.7L-6.1L Hemi  
2008-2010 Dodge Challenger 5.7L-6.1L Hemi

### **Parts List**

1- Intake tube  
1- Air filter  
1- Heat shield  
52"- Rubber seal  
1- 4" Flex coupler  
1- 90° Reducer coupler  
15.5"- 5/8" Breather hose  
1- 3.5" Hose clamps  
3- 4" Hose clamps  
1- 1/2" ID grommet  
1- 4" Offset velocity stack adapter  
1- 6" Hose clamp

### **Tools Required:**

• 5/16" or 8mm nut driver  
• 10mm socket  
• Ratchet  
• 5mm Allen

This kit comes with a high flow lifetime hpR filter. It is factory pre-oiled and ready to install.



P/N HPR9892 (red filter)  
P/N HPR9892B (blue filter)  
P/N HPR9892K (black filter)  
P/N HPR9892W (white filter)

**CARB Exempt-No  
Products that are not  
CARB exempt are legal  
in most states, but may  
not be used in California  
or states with similar  
emissions control laws.**



### Step 1

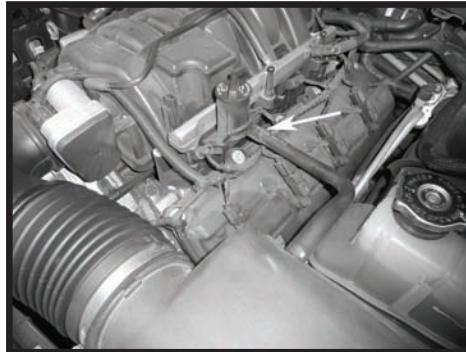
**Safety first! Before you begin the installation, make sure that the vehicle is in park (or neutral for a manual transmission) with the parking brake set. Disconnect the negative battery terminal and verify that all components that are listed are present. Note: This kit was designed and tested on a stock engine without any custom tuning done to the engine computer. Removing the battery cable may erase the programmed radio stations. The anti-theft code will need to be entered into some radios after the battery cable is connected. The anti-theft code can typically be found in the owner's manual or at your local dealership.**

---



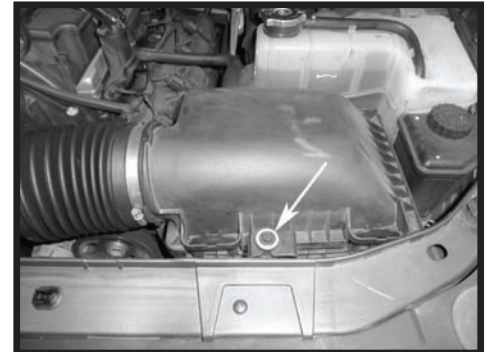
### Step 2

**Remove the engine cover.**



### Step 3

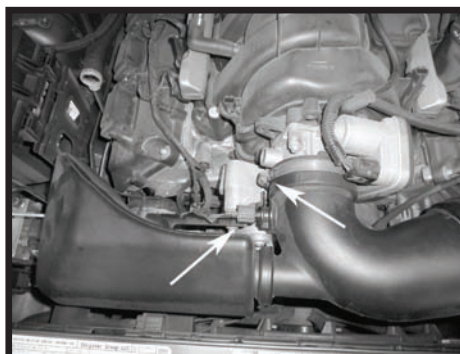
**Remove the breather hose from the intake manifold.**



### Step 4

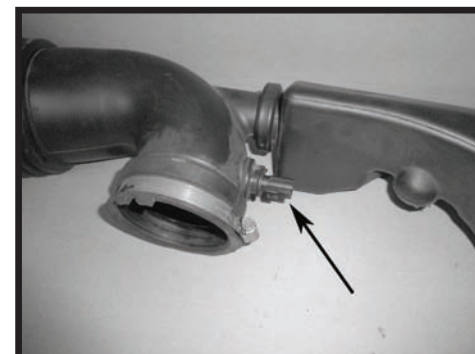
**Remove the screw holding the factory air box in place.**

---



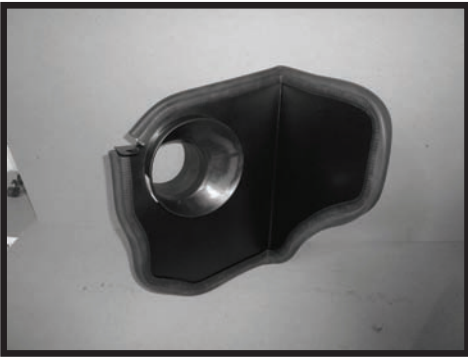
### Step 5

**Disconnect the electrical connector on the intake air temperature sensor. Loosen the clamp at the throttle. Remove the factory air intake system from the vehicle.**



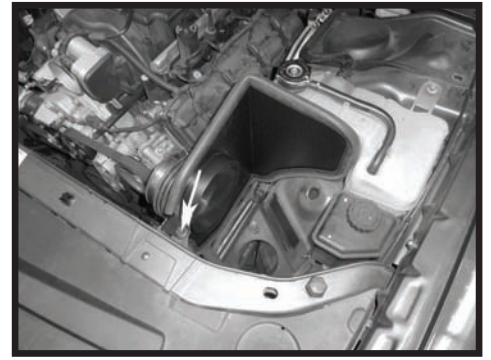
### Step 6

**Turn the Intake Air Temperature (IAT) sensor counterclockwise and remove it from the factory intake tube. Remove the o-ring from the sensor.**



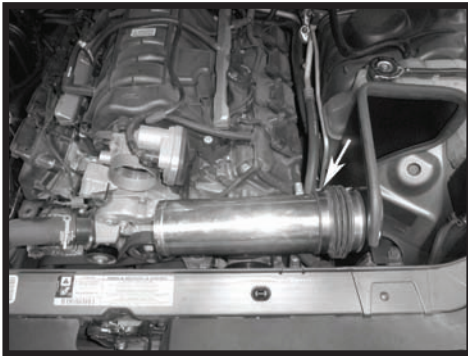
**Step 7**

Place the velocity stack adapter in the heat shield and install the supplied coupler making sure the coupler is pushed completely against the heat shield. Take note of the orientation of the funnel, this may be rotated slightly once the filter is installed in the vehicle. Once the adapter and coupler are tight against the heat shield, tighten the clamp. Make sure that the clamp for the intake tube is installed but left loose at this time. Dress the heat shield with rubber seal as shown.



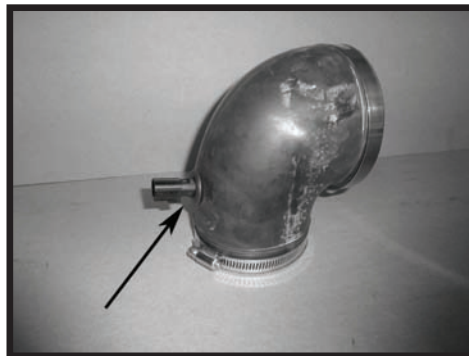
**Step 8**

Install the heat shield into the vehicle. Reuse the factory bolt from the stock intake.



**Step 9**

Install the Spectre Performance intake tube on the flex coupler that is on the heat shield with the breather tube pointing towards the motor. Once in position, fasten it securely using the supplied clamp.



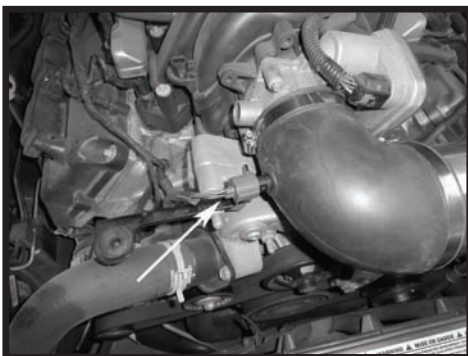
**Step 10**

Install the supplied grommet into the 90° coupler then install IAT sensor into the grommet.



**Step 11**

Install the 90° coupler onto the intake tube. Once on the tube, place the other end of the coupler over the throttle body. Fully tighten the clamps.



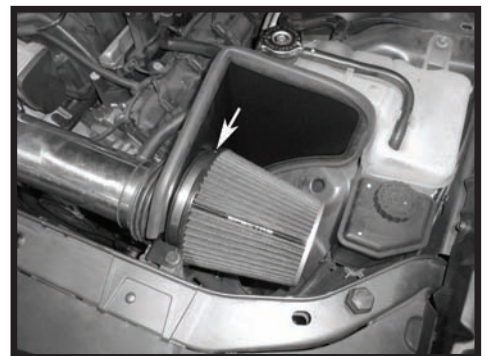
**Step 12**

Reconnect the electrical connector for the IAT sensor.



**Step 13**

Install the breather hose on the hose fitting on the engine and the intake.



**Step 14**

Install the filter on the velocity stack adapter and fasten it securely.





**Step 15**  
Install top engine cover. Position the breather hose so it does not rub on cover.



**Step 16**  
Make sure that all clamps and hardware are fully tightened. Reconnect the battery cable, start the vehicle and let it warm up. Shut off and inspect the installation once more for any loose clamps, wires, or hardware. Test drive & enjoy! Your installation is now complete. Periodically check all clamps and brackets.

**SPEED BY SPECTRE**  
*The 400mph Company*

Check out the collection of performance air intake systems we offer.