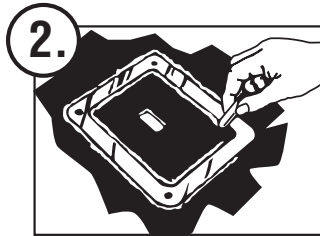
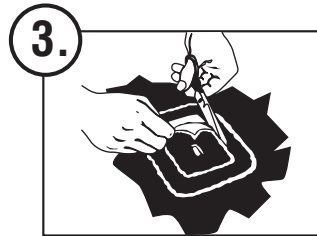


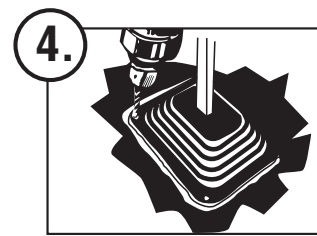
1. Remove shifter knob. Place boot over stick and slide down to floor. Mark an outline of the boot on the carpet.



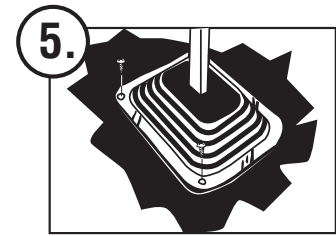
2. Remove boot and place retainer plate inside the marked outline. Mark the inside opening of the plate on the carpet.



3. Cut the carpet around the inside outline.



4. Slide the boot over the stick. Drill 1/8" diameter holes through floor using the boot holes as a guide.



5. Position retainer plate into place and fasten with sheet metal screws supplied in package.

SPECTRE™

©2010 Spectre Performance