

*The 400mph Company™*

## Intake Installation Instructions

**P/N 9983 (red filter) - P/N 9983B (blue filter)  
9983K (black filter) 9983W (white filter)**

### Year/Make/Model/Engine

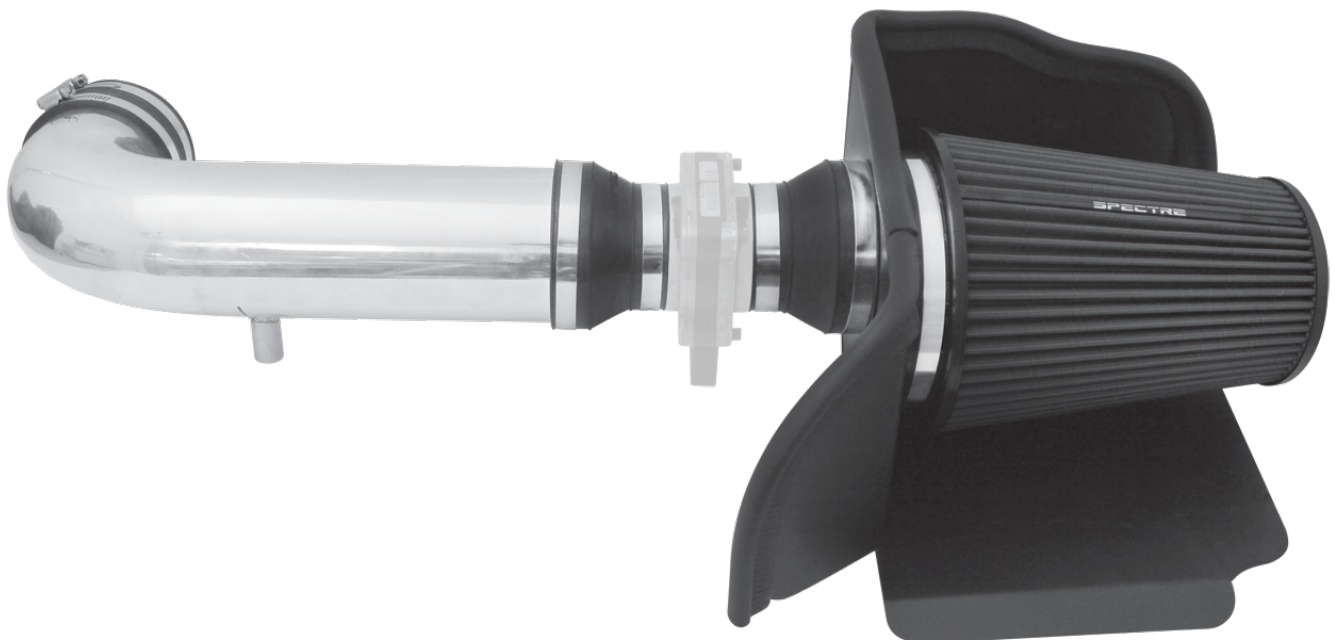
1994 - 1996 Chevrolet Impala SS 5.7L

#### Parts List

- 1- Heat shield, Base
- 1- Heat shield, Side
- 1- Air filter (Replacement filter HPR9891, HPR9891B, HPR9891K, HPR9891W)
- 1- Intake tube
- 2- 4"-3" coupler
- 1- 4" x 5"L coupler
- 4- 4" Hose clamps
- 2- 3" Hose clamp
- 3/32"- Rubber seal
- 1- Offset velocity stack adapter
- 1- 6" Clamp
- 1- 1/2" ID grommet
- 1- 3/16" ID grommet
- 3- Allen bolt
- 3- Flat washer
- 3- Locknut
- 1- Hex key wrench

#### Tools Required:

- 5/16" or 8mm nut driver
- 1/4" nut driver
- 13mm socket
- Ratchet





**Step 1**  
Safety first! Before you begin the installation, make sure that the vehicle is in park (or neutral for a manual transmission) with the parking brake set. Disconnect the negative battery terminal and verify that all components that are listed are present. Note: This kit was designed and tested on a stock engine without any custom tuning done to the engine computer. Removing the battery cable may erase the programmed radio stations. The anti-theft code will need to be entered into some radios after the battery cable is connected. The anti-theft code can typically be found in the owner's manual or at your local dealership.

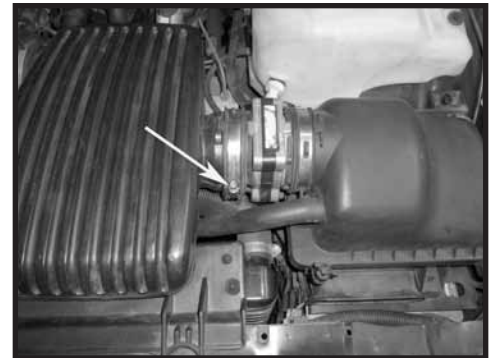
---



**Step 2**  
Remove the two nuts and loosen the clamp. Remove the engine cover from the vehicle.

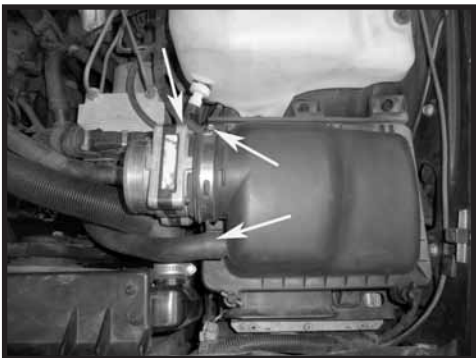


**Step 3**  
Disconnect the Intake Air Temperature Sensor (IAT) and the small vent line from the factory air intake tube. Loosen the clamp at the throttle body.



**Step 4**  
Loosen the clamp on the outlet side of the Mass Air Flow Sensor (MAFS). Remove the air intake tube assembly including the factory tube coupler from the vehicle.

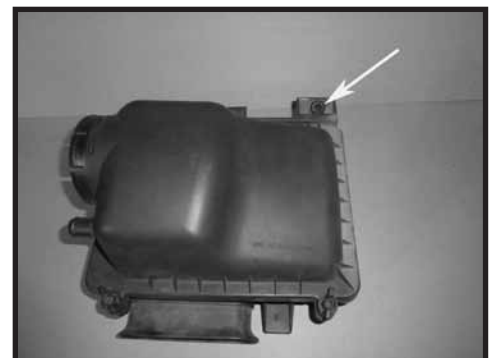
---



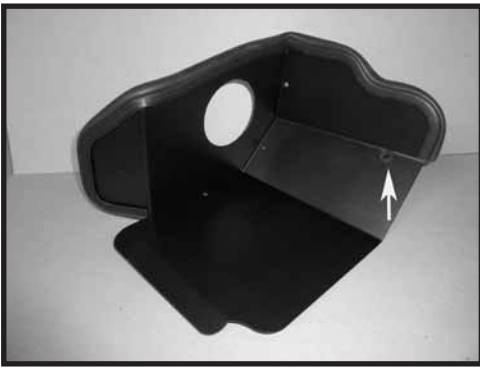
**Step 5**  
Disconnect the PCV fresh air hose from the air box and electrical connector at the MAFS. Loosen the clamp for the inlet side of the MAFS and remove the MAFS from the vehicle.



**Step 6**  
Remove the air box assembly by pulling up and out firmly.



**Step 7**  
Remove the factory grommet from the air box. This will be reused in Step 8.



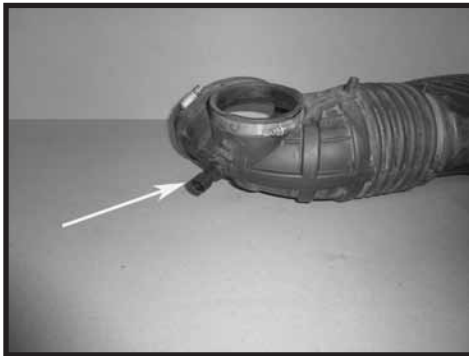
### Step 8

Assemble the heat shield with the tabs placed on the outside of heat shield. Install the rubber bulb seal. Install the rubber grommet removed in Step 7.



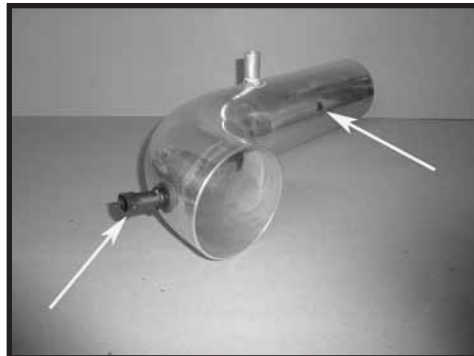
### Step 9

Place the velocity stack adapter in the heat shield with the orientation of the funnel of the large flat surface pointing in the 7 o'clock position; install the supplied reducer coupler making sure the coupler is pushed completely against the heat shield. Once the adapter and coupler are tight against the heat shield, tighten the clamp. Install the MAFS and the second reducer coupler making sure the arrow on the MAFS is pointing away from the heat shield.



### Step 10

Remove the IAT sensor from the factory intake tube.



### Step 11

Install the two grommets supplied into the intake tube. Then install the IAT sensor into the larger grommet.



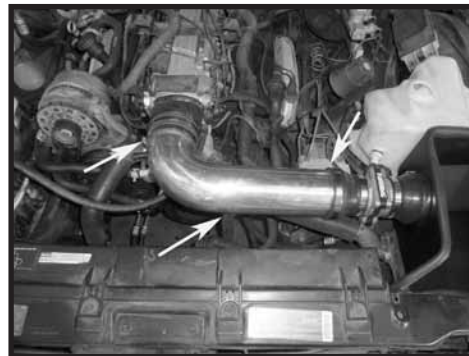
### Step 12

Install the heat shield into the vehicle. Make sure the grommet pins locate into the grommets on the bottom of the heat shield and at the same time making sure the side grommet locates into the pin on the inner fender.



### Step 13

Install the coupler on the throttle body and secure the coupler in place. Install a second clamp but do not tighten at this time.



### Step 14

Install the factory PCV hose to the fitting on the bottom side of the intake tube. Install the Spectre Performance intake tube into the coupler on the heat shield then into the coupler on the throttle body. Fasten securely in place.

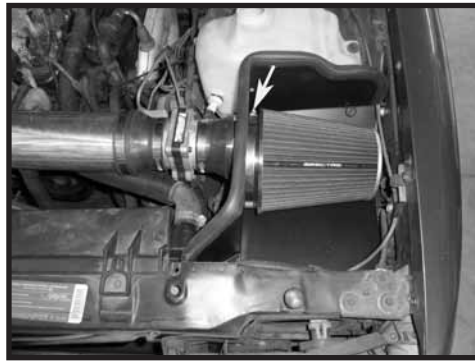


### Step 15

Reconnect the IAT electrical connector.



**Step 16**  
Reconnect the MAFS electrical connector and install the small vent hose into the grommet.



**Step 17**  
Install the supplied air filter and clamp and tighten the clamp that secures the air filter. If needed, rotate the air filter/velocity stack adapter assembly for the maximum clearance as shown.



**Step 18**  
Make sure that all clamps and hardware are fully tightened. Reconnect the battery cable and start the engine and let it warm up. Shut it off and inspect the installation once more for any loose clamps, wires, or hardware. Test drive & enjoy! Your installation is now complete. Periodically check all clamps and brackets.