

# Installation & CARE

## 2011-2013, 2014-2015 FORD FIESTA HATCHBACK LED TAIL LIGHTS INSTALLATION

### BEFORE INSTALLATION

- If you experience any difficulties that the instruction did not cover, please seek assistance at local automotive shop.
- Please wear protection before you work on any vehicle.
- An assistant is useful when removing the front bumper from your vehicle.
- Please be cautious when working with the bumper or any parts belonging to the vehicles's body to prevent scratching.
- Do not make direct contact with the halogen bulbs or the wire assembly until the unit has cooled down after use.

### TOOLS AND SUPPLIES REQUIRED

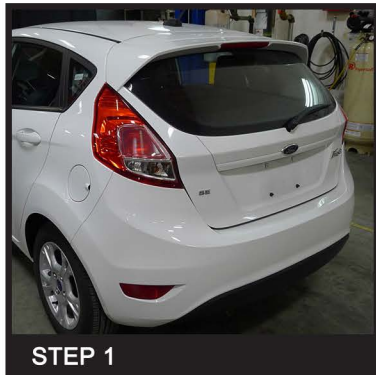
¼" Ratchet	Trim Pad Remover	T25	Phillips Screwdriver
			

### PRODUCT NUMBER

LT-FST115RLED-TM  
LT-FST115GLED-TM  
LT-FST115RGLED-TM



### LET'S START THE INSTALLATIONS



**STEP 1**

Before installation



**STEP 2**

Open the rear hatch



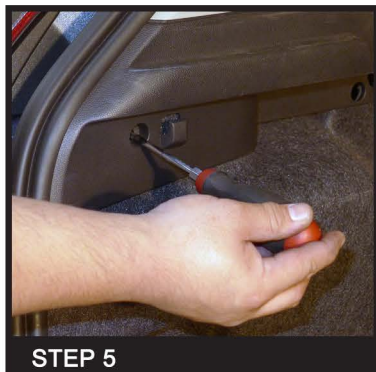
**STEP 3**

Remove the (2) T25 bolts



**STEP 4**

Remove the T25 bolts



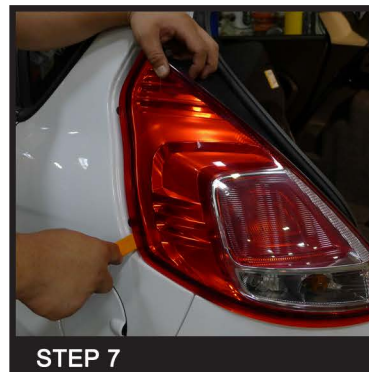
**STEP 5**

Remove the Phillips head screw



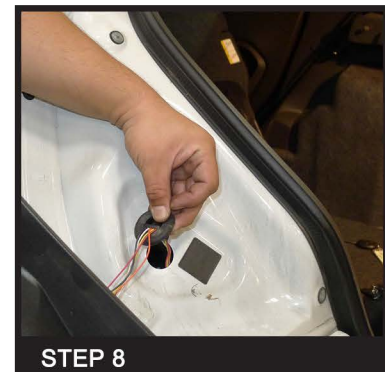
**STEP 6**

Disconnect the taillight harness



**STEP 7**

Remove the factory taillight



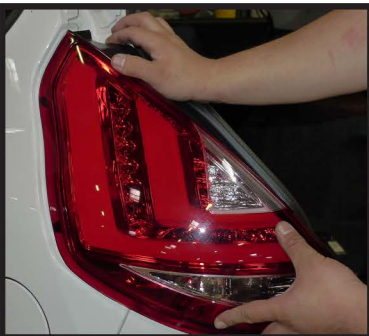
**STEP 8**

Remove the taillight harness with the factory taillight



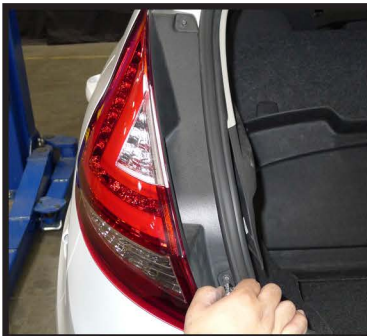
**STEP 9**

Place the new LED taillight in the factory location



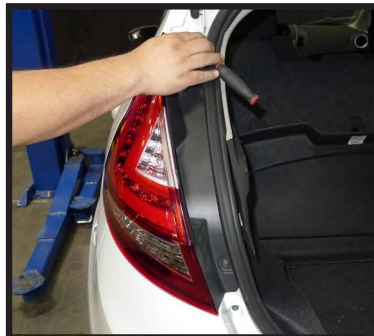
**STEP 10**

Place the new LED taillight in the factory location



**STEP 11**

Tighten the (2) T25 bolts



**STEP 12**

Tighten the T25 bolts



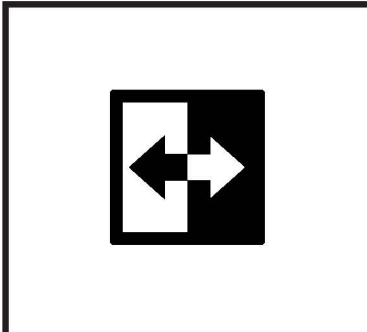
**STEP 13**

Please see the "L. E. D. tail lights installation instruction" If your tail lights don't have L.E.D. You can skip the installation instruction. Connect the tail-light harness to the LED taillight



**STEP 14**

Tighten the Phillips head screw



**STEP 15**

Please repeat the steps from 1 to 14 for the opposite side



**STEP 16**

The installation now is complete