

SPEC-D

Tuning

2008-2013 TOYOTA HIGHLANDER ROOF RACK INSTALLATION INSTRUCTIONS

If you experience any difficulties that the instruction did not cover, Please seek assistance at a local automotive shop

Please wear protection before you work on any vehicle.



An assistant is useful when removing the front bumper from your vehicle.

Please be cautious when working with the bumper or any parts belonging to the vehicle's body to prevent scratching.

Do not make direct contact with the halogen bulbs or the wire assembly until the unit has cooled down after use.

TOOLS AND SUPPLIES REQUIRED



Phillips Screwdriver

Handy Remover Tool

Rubber Mallet

Product Part Numbers:

RRB-HLDR08BK



2008-2013 TOYOTA HIGHLANDER ROOF RACK INSTALLATION INSTRUCTIONS

If you experience any difficulties that the instruction did not cover, Please seek assistance at a local automotive shop

Please wear protection before you work on any vehicle.



An assistant is useful when removing the front bumper from your vehicle.

Please be cautious when working with the bumper or any parts belonging to the vehicle's body to prevent scratching.

Do not make direct contact with the halogen bulbs or the wire assembly until the unit has cooled down after use.



1. Before



2. Assemble crossrail components



3. Right and left side support



4. Place the nut into the crossrail support slot



5. Install the thumb screws



6. Slide the right side support over rail



7. Secure the right side support with the (2) phillips screws



8. Secure the right side support with the (2) phillips screws



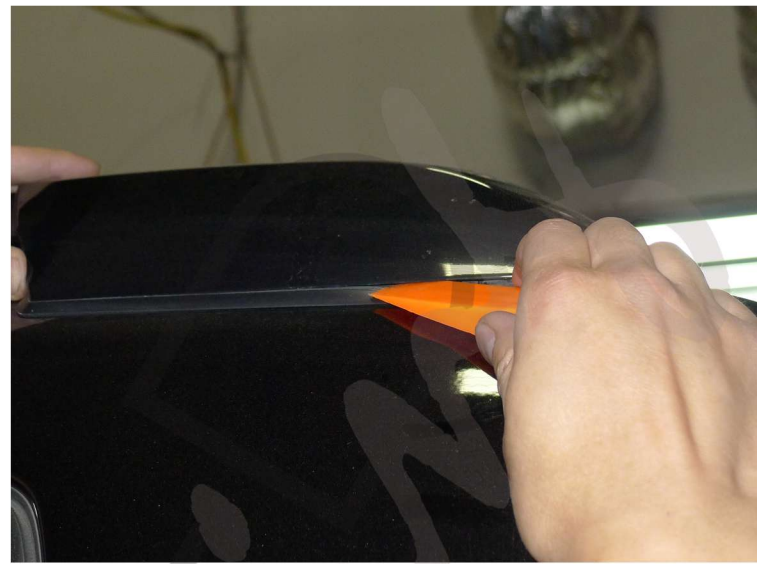
9. Place the left side support over rail



10. Secure the left support with the small thumb screw



11. Roof rack support cover



12. Remove the roof rack support cover



13. Remove the roof rack support cover



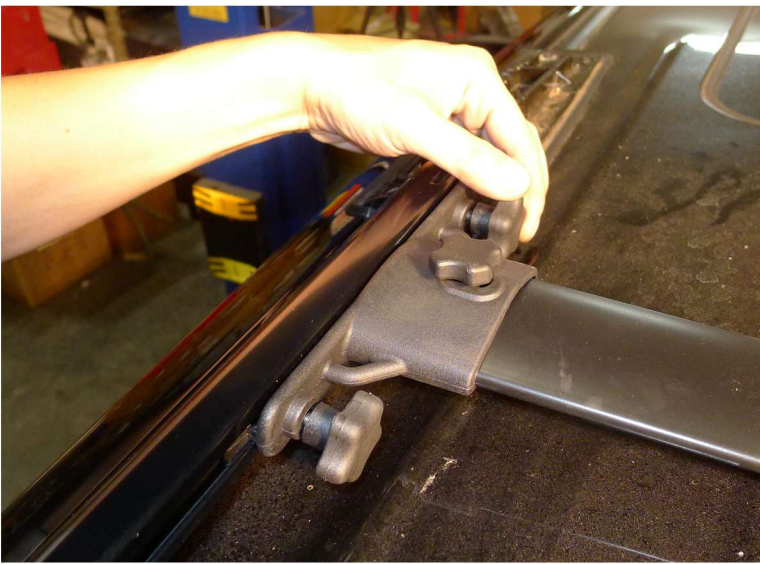
14. Remove the roof rack support cover



15. Slide cross rail supports into the roof rack



16. Tap crossrail into position with the mallet



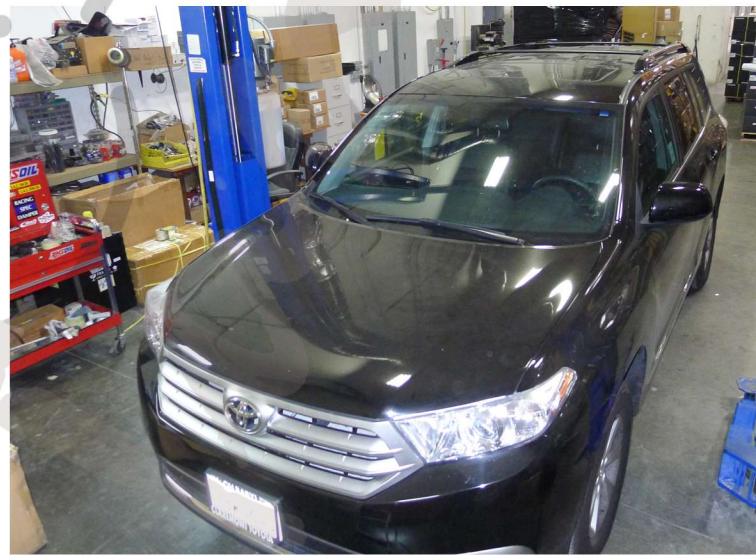
17. Tighten and secure with thumb screws



18. Tighten and secure with thumb screws



19. Replace the roof rack support covers



20. The installation now is complete