

# Installation & CARE

## 2014-2015 CHEVY SILVERADO LED TAIL LIGHTS INSTALLATION INSTRUCTION

### BEFORE INSTALLATION

- If you experience any difficulties that the instruction did not cover, please seek assistance at local automotive shop.
- Please wear protection before you work on any vehicle.
- An assistant is useful when removing the front bumper from your vehicle.
- Please be cautious when working with the bumper or any parts belonging to the vehicles's body to prevent scratching.
- Do not make direct contact with the halogen bulbs or the wire assembly until the unit has cooled down after use.

### TOOLS AND SUPPLIES REQUIRED

ST15 screwdriver	Plastic Pry bar	#3 Phillips head screwdriver
		

### PRODUCT NUMBER

LT-SIV14CLED-TM  
 LT-SIV14GLED-TM  
 LT-SIV14RLED-TM  
 LT-SIV14JMLED-TM  
 LT-SIV14RGLED-TM  
 LT-SIV14BBLED-TM

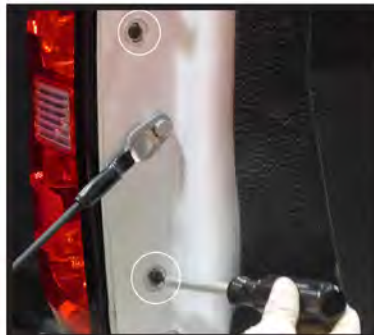


### LET'S START THE INSTALLATIONS



**STEP 1**

Lower trunk



**STEP 2**

Remove two ST15 screws



**STEP 3**

Uninstall tail light



**STEP 4**

Disconnect sockets from tail light



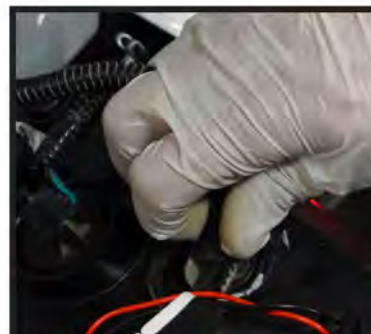
**STEP 5**

Remove two larger bulbs



**STEP 6**

Connect LED connectors into bulb sockets



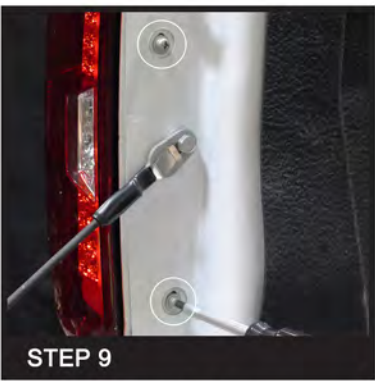
**STEP 7**

Fasten bulb sockets into tail light housing



**STEP 8**

Install LED Tail light housing



**STEP 9**

Install the provided PH3 screws



**STEP 10**

Repeat steps 2-9 for other side



**STEP 11**

Close trunk

