

Installation & CARE

2014-2016 GMC SIERRA LED TAIL LIGHTS INSTALLATION

BEFORE INSTALLATION

- If you experience any difficulties that the instruction did not cover, please seek assistance at local automotive shop.
- Please wear protection before you work on any vehicle.
- An assistant is useful when removing the front bumper from your vehicle.
- Please be cautious when working with the bumper or any parts belonging to the vehicles's body to prevent scratching.
- Do not make direct contact with the halogen bulbs or the wire assembly until the unit has cooled down after use.

TOOLS AND SUPPLIES REQUIRED

ST15 screwdriver	Plastic Pry bar	#3 Phillips head screwdriver
		

PRODUCT NUMBER

LT-SIE14RLED-TM
 LT-SIE14RGLED-TM
 LT-SIE14CLELED-TM
 LT-SIE14JMLED-TM
 LT-SIE14GLELED-TM
 LT-SIE14BBLED-TM

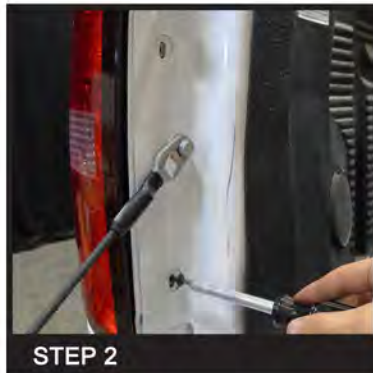


LET'S START THE INSTALLATIONS



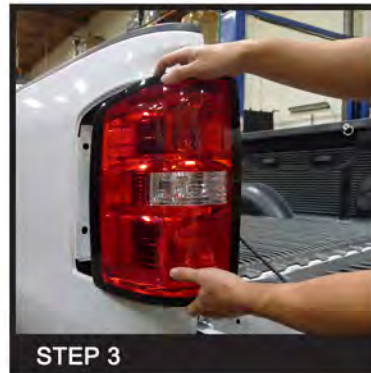
STEP 1

Lower the tailgate



STEP 2

Remove two ST15 screws



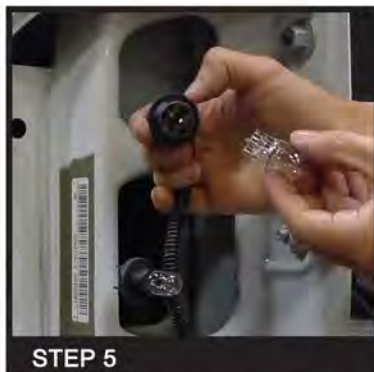
STEP 3

Uninstall tail light



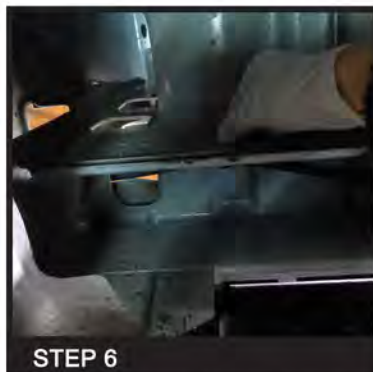
STEP 4

Disconnect sockets from tail light



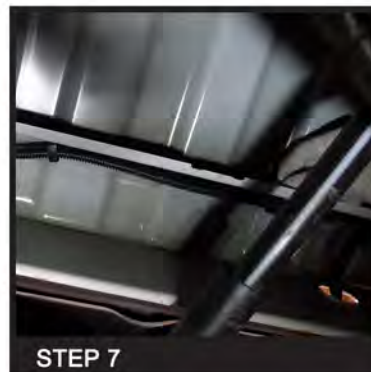
STEP 5

Remove bulbs driving-brake light, and side marker bulbs from sockets - Leave reverse light bulb in



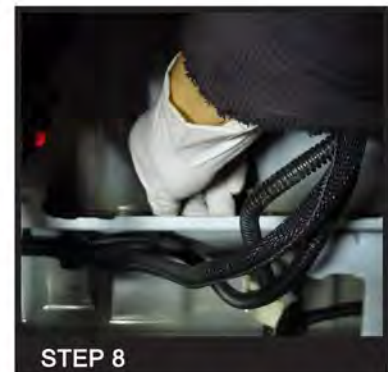
STEP 6

Disconnect harness fastener from under the vehicle



STEP 7

Disconnect harness fasteners from under the vehicle



STEP 8

Disconnect harness fastener from under the vehicle



STEP 9

Disconnect harness fastener from under the vehicle to create more wire slack



STEP 10

Ensure that there is enough wire slack and install sockets into tail light



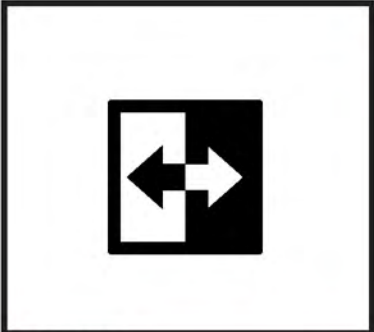
STEP 11

Install tail light



STEP 12

Install two provided Phillips head screws per tail light



STEP 13

Repeat steps 2-8 for other side



STEP 14

Close tailgate