

# INSTALLATION & CARE

## 2019-UP DODGE RAM 2500/3500 FULL LED TAIL LIGHT WITH SEQUENTIAL TURN SIGNAL

### BEFORE INSTALLATION:

- If you experience any difficulties that the instructions did not cover, please seek assistance at a local automotive shop.
- Please wear proper protective equipment before you work on any vehicle.
- An assistant is recommended when removing the front bumper from your vehicle.
- Please be cautious when working with the bumper or any parts belonging to the vehicle's body to prevent scratching.
- Do not make direct contact with the halogen bulbs or the wire assembly until the unit has cooled down after use.

### TOOLS AND SUPPLIES REQUIRED

1/4" Ratchet	1/4" Drive T25 Torx Bit	Trim Pad Remover	
			

### PRODUCT NUMBER

LT-RAM1925BBLD-SQ-TM  
LT-RAM1925JMLD-SQ-TM



### LET'S START THE INSTALLATION



STEP 1

Remove the two T25 Torx bolts



STEP 2A

Unseat the factory tail light housing



STEP 2B

Unseat the factory tail light housing



STEP 3A

Unlock the connector red lock



STEP 3B

Unlock the connector red lock



STEP 4

Disconnect the tail light harness



**STEP 5**

Remove the factory tail light housing



**STEP 6**

Use alcohol to clean the metal surface to apply the resistor



**STEP 7**

Set the new tail light resistor on the metal area



**STEP 8**

Connect the tail light harness



**STEP 9**

Connect resistor wires



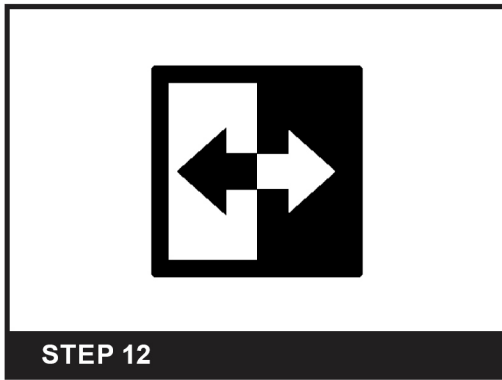
**STEP 10**

Seat the new tail light assembly in place



**STEP 11**

Reinstall the two T25 Torx bolts



**STEP 12**

Please repeat the steps from 1 to 11 for the opposite side



**STEP 13**

Close the tailgate to complete the installation



# INSTALLATION & CARE

## 2019-UP DODGE RAM 2500/3500 FULL LED TAIL LIGHT WITH SEQUENTIAL TURN SIGNAL

### BEFORE INSTALLATION:

- If you experience any difficulties that the instructions did not cover, please seek assistance at a local automotive shop.
- Please wear proper protective equipment before you work on any vehicle.
- An assistant is recommended when removing the front bumper from your vehicle.
- Please be cautious when working with the bumper or any parts belonging to the vehicle's body to prevent scratching.
- Do not make direct contact with the halogen bulbs or the wire assembly until the unit has cooled down after use.

## 2019-UP DODGE RAM 2500/3500 FULL LED TAIL LIGHT WITH SEQUENTIAL TURN SIGNAL

