

# SPEC-D *Trimming*

## 2002-2005 DODGE RAM LED TAIL LIGHTS INSTALLATION INSTRUCTIONS



If you experience any difficulties that the instruction did not cover, Please seek local auto shop for advise.  
Please wear protection before you work on your vehicle.

An assistant is helpful when removing the front bumper.

Please be careful while working with the bumper or body part to avoid scratching.

Do not make direct contact with the halogen bulb or the wire assembly until the unit has cooled down after use.

### TOOLS AND SUPPLIES REQUIRED

Pocket Flat Tip Screwdriver

½" Drive Ratchet

T20 Torx Socket

Handy Remover

### Product Part Numbers:

LT-RAM02CLED-TM

LT-RAM02RLED-TM

LT-RAM02GLED-TM

LT-RAM02JMLED-TM





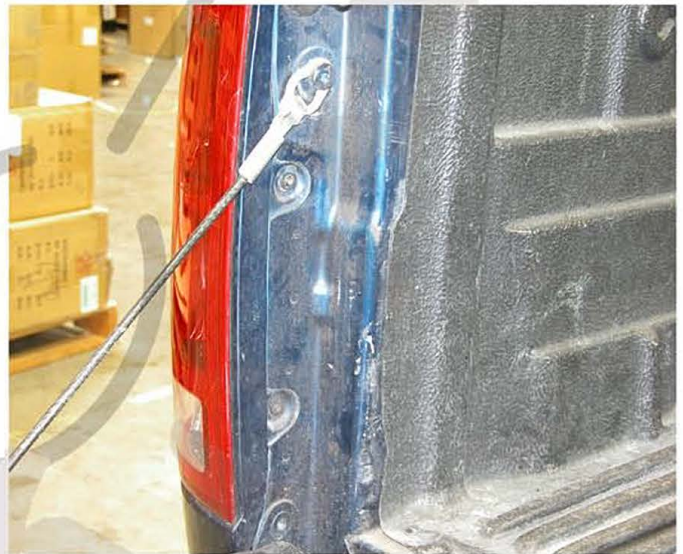
# 2002-2005 DODGE RAM LED TAIL LIGHTS INSTALLATION INSTRUCTIONS



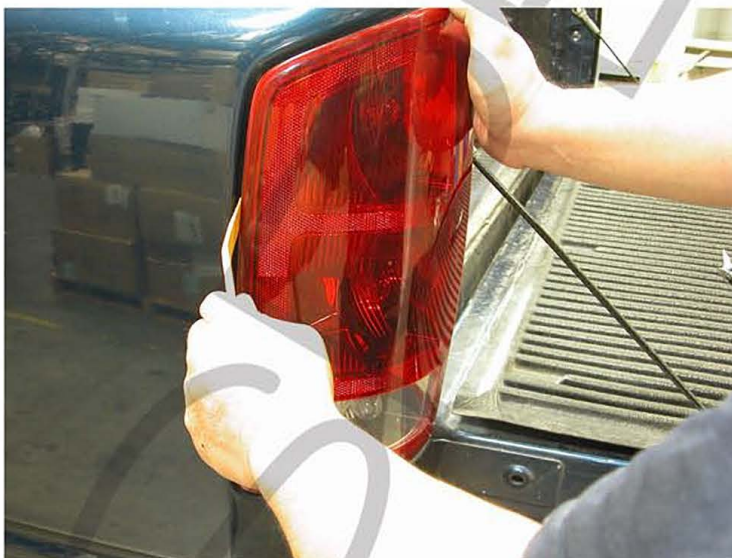
If you experience any difficulties that the instruction did not cover, Please seek local auto shop for advise.  
Please wear protection before you work on your vehicle.  
An assistant is helpful when removing the front bumper.  
Please be careful while working with the bumper or body part to avoid scratching.  
Do not make direct contact with the halogen bulb or the wire assembly until the unit has cooled down after use.



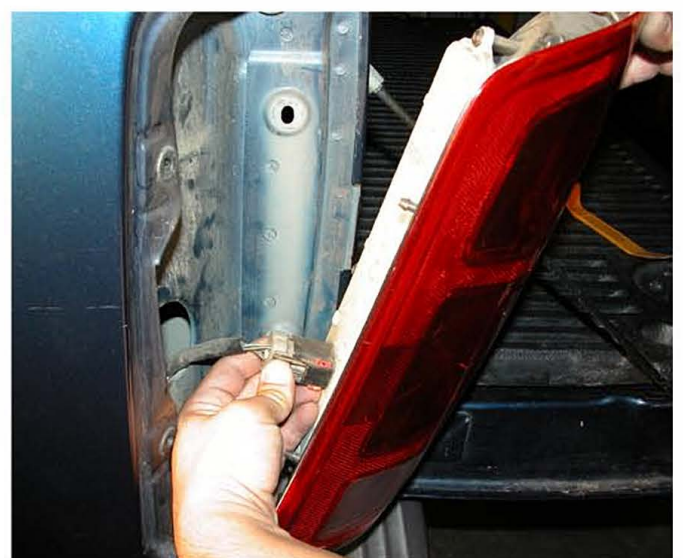
1. Open the tail gate



2. Remove two T20 bolts

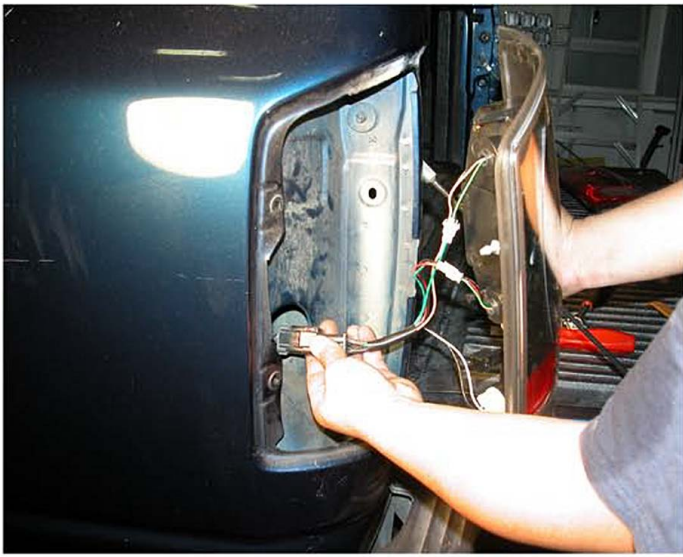


3. Remove the taillight



4. Remove wire harness from the taillight





5. Connect all the connectors



6. Install taillight



7. Install two T20 bolts



8. Please repeat the picture order from 1 to 8 for the opposite side



9. The installation is now complete