

Installation & CARE

2006-2008 LEXUS IS250 LED TAIL LIGHTS INSTALLATION

BEFORE INSTALLATION

- If you experience any difficulties that the instruction did not cover, please seek assistance at local automotive shop.
- Please wear protection before you work on any vehicle.
- An assistant is useful when removing the front bumper from your vehicle.
- Please be cautious when working with the bumper or any parts belonging to the vehicles's body to prevent scratching.
- Do not make direct contact with the halogen bulbs or the wire assembly until the unit has cooled down after use.

TOOLS AND SUPPLIES REQUIRED

1/4" Ratchet	6" Extension	10 mm socket	8mm socket
			
Trim Pad Remover	Flat Tipped Screwdriver		
			

PRODUCT NUMBER

LT-IS25006JMLED-TM
 LT-IS25006RGLED-TM
 LT-IS25006CLED-TM
 LT-IS25006GLED-TM
 LT-IS25006RLED-TM

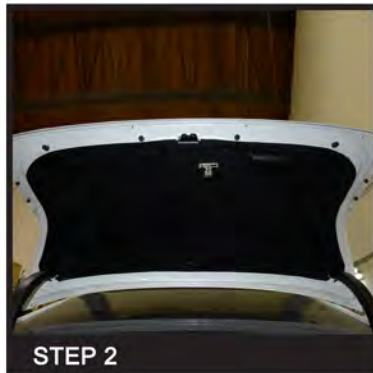


LET'S START THE INSTALLATIONS



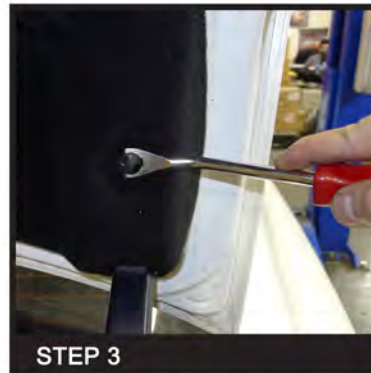
STEP 1

Before installation



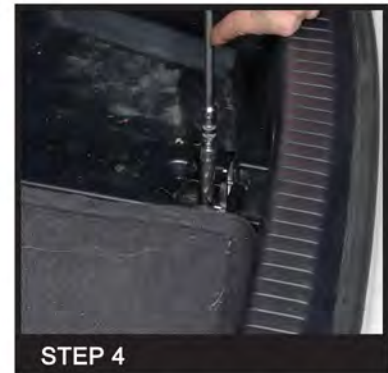
STEP 2

Trunk lid liner



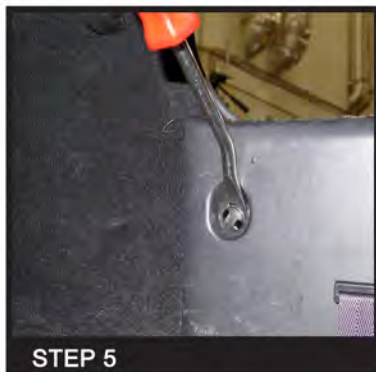
STEP 3

Remove the (8) plastic clips



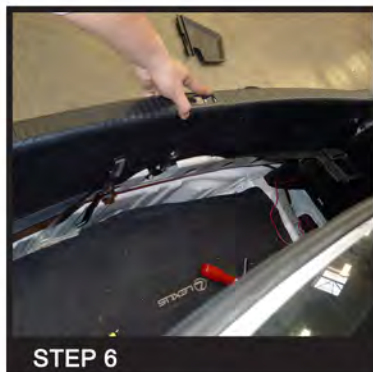
STEP 4

Remove the 10mm bolt and hook assembly



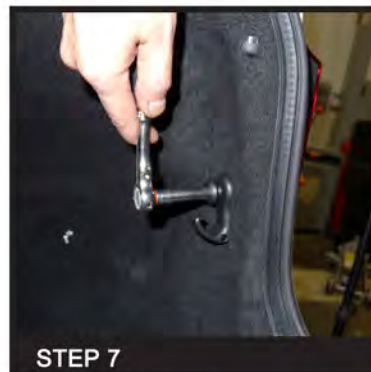
STEP 5

Remove the (3) plastic clips



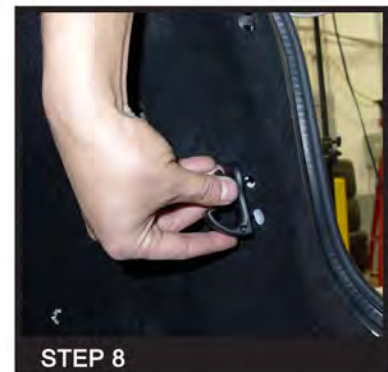
STEP 6

Remove the plastic trim



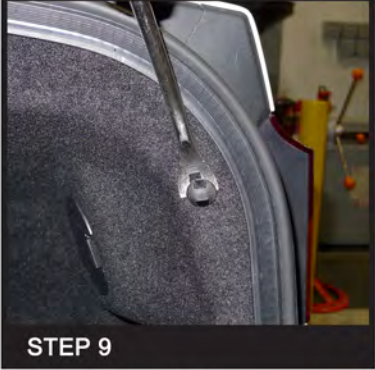
STEP 7

Remove the 8mm bolt



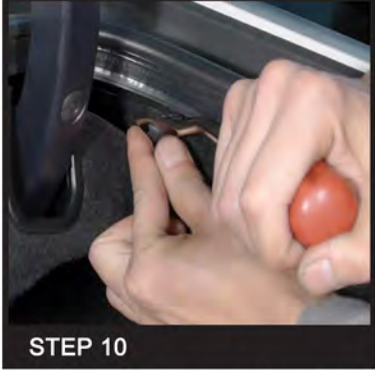
STEP 8

Remove the plastic hook



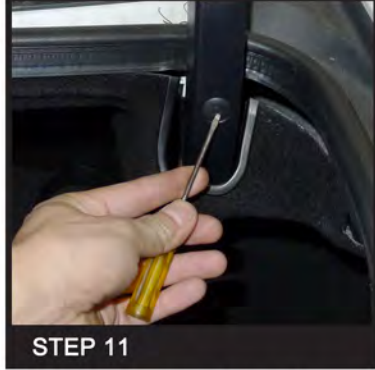
STEP 9

Remove the plastic clip



STEP 10

Pull the trunk liner aside then remove the plastic clip



STEP 11

Remove the plastic clip from the trunk hinge



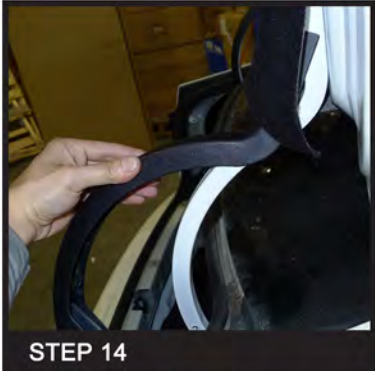
STEP 12

Remove the plastic trunk hinge cover



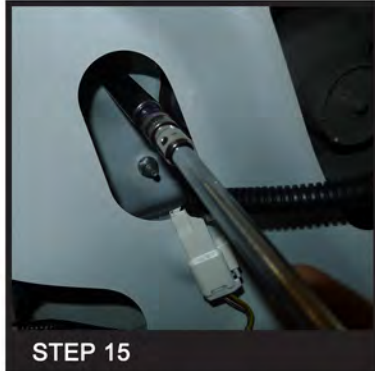
STEP 13

Remove the plastic trunk hinge cover



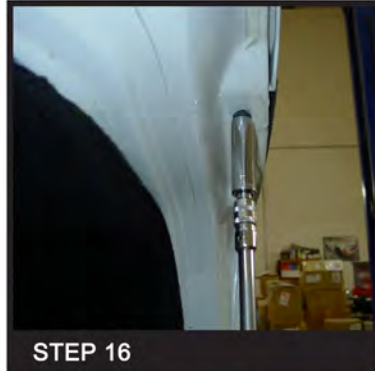
STEP 14

Remove the plastic trunk hinge cover



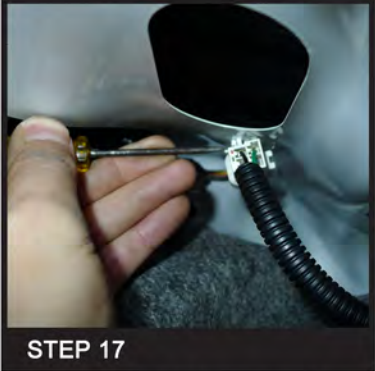
STEP 15

Remove the (3) 10mm nuts



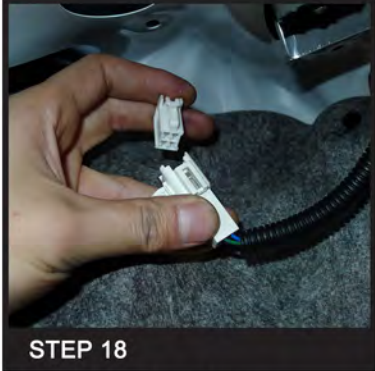
STEP 16

Remove the (3) 10mm nuts



STEP 17

Remove the taillight harness connector from the trunk lid



STEP 18

Disconnect the taillight harness



STEP 19

Remove the factory taillight



STEP 20

Place the LED taillight into the stock location



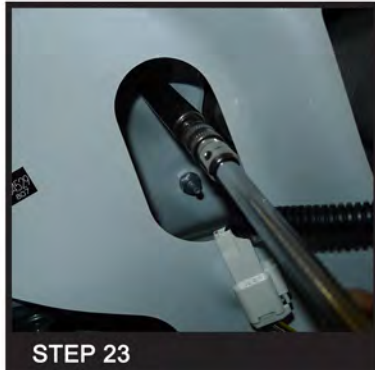
STEP 21

Connect the taillight harness



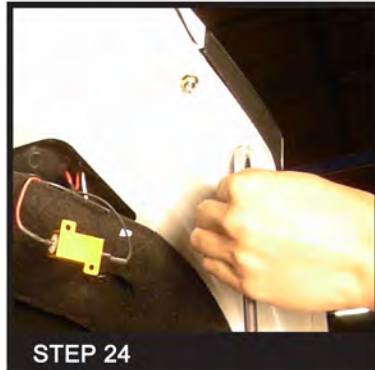
STEP 22

Reconnect the taillight harness connector to the trunk lid



STEP 23

Tighten the 10mm nut



STEP 24

Tighten the (2) 8mm nuts



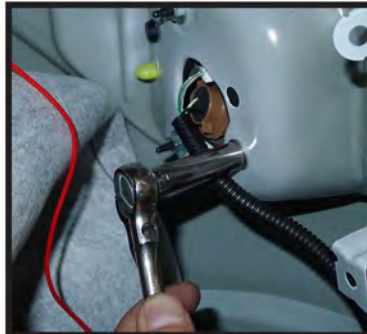
STEP 25

(3) 10mm nuts location



STEP 26

Disconnect the taillight harness



STEP 27

Remove the (3) 10mm nuts



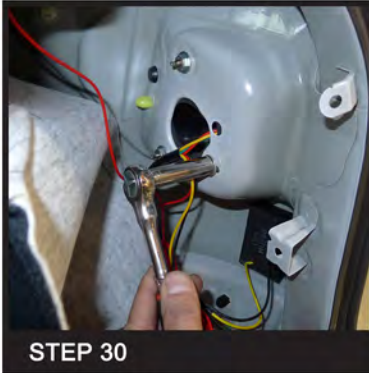
STEP 28

Remove the factory taillight



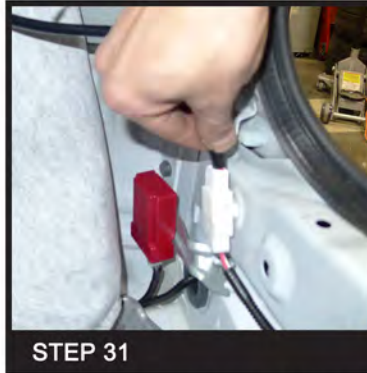
STEP 29

Place the LED taillight in the stock location



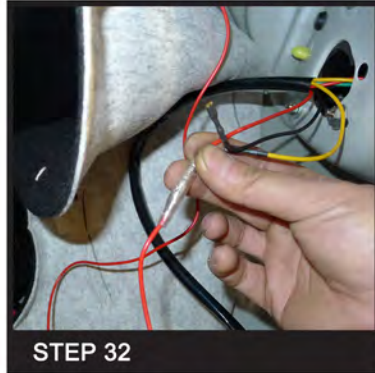
STEP 30

Tighten the (3) 10mm nuts



STEP 31

Connect the taillight harness. Please see the " L.E.D. tail lights installation instruction" If your tail lights don't have L.E.D. You can skip the installation instruction.



STEP 32

Connect the red wire



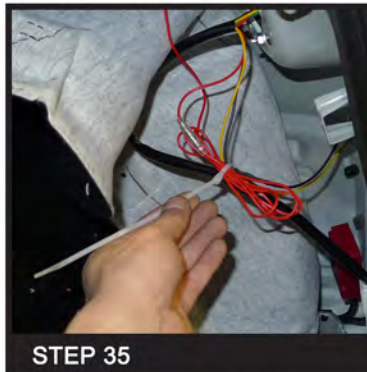
STEP 33

Connect the resistor box to the taillight



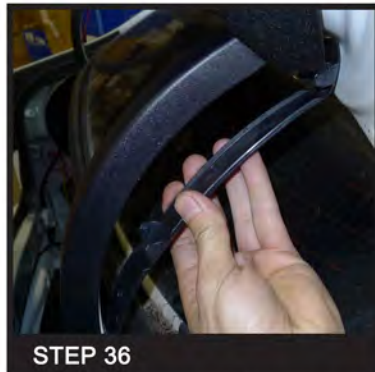
STEP 34

Attach the resistor box to the inner body panel



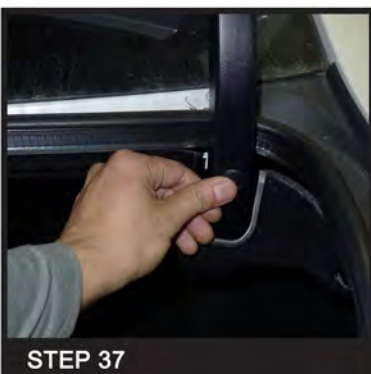
STEP 35

Zip tie the loose wires together



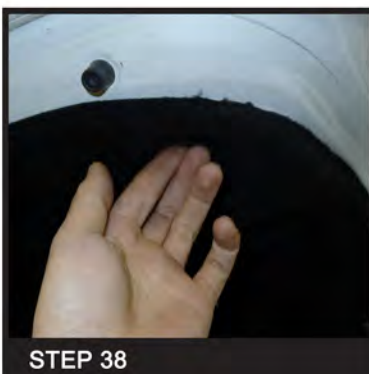
STEP 36

Replace the plastic trunk hinge cover



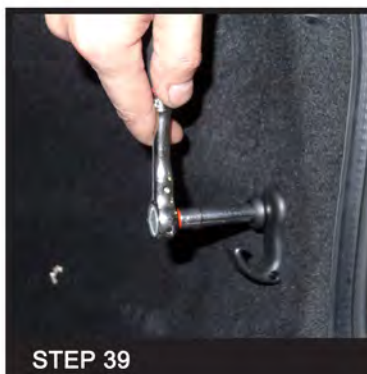
STEP 37

Replace the plastic clip]



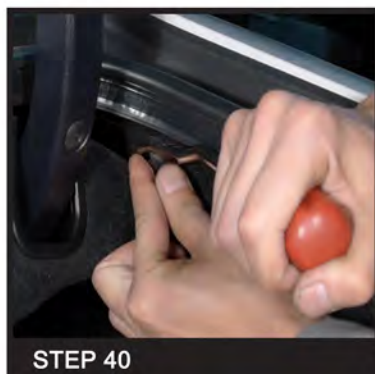
STEP 38

Replace the (8) plastic clip attaching the liner to the trunk lid



STEP 39

Tighten the 8mm bolt



STEP 40

Replace the plastic clip



STEP 41

Replace the plastic trim



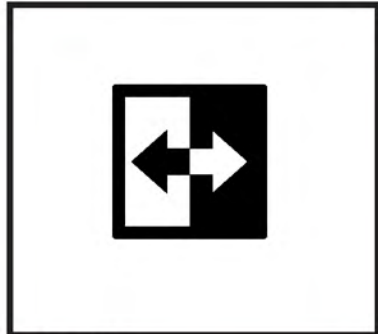
STEP 42

Replace the (3) plastic clips



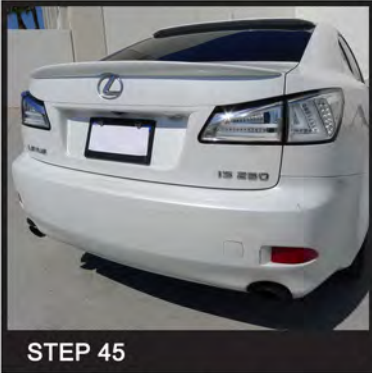
STEP 43

Tighten the 10mm bolt



STEP 44

Please repeat the steps from 1 to 43 for the opposite side



STEP 45

The installation now is complete